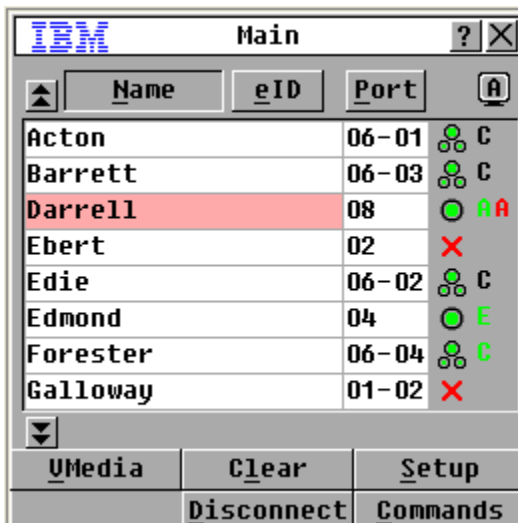


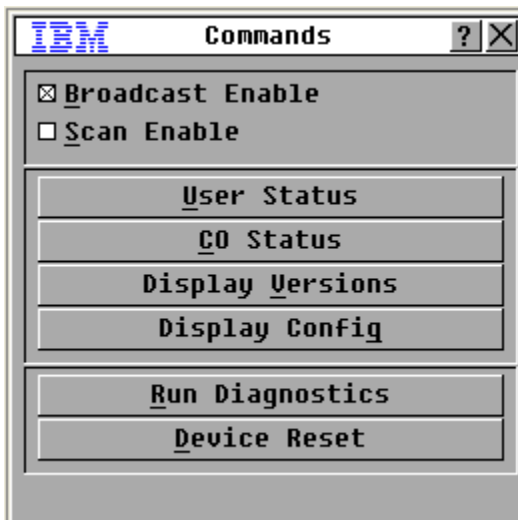
Using OSCAR to update LCM (1754A1X, 1754A2X) firmware.

Visit <http://www.ibm.com/support/> and download the latest FLASH firmware from IBM. Save the FLASH upgrade file to the appropriate directory on the TFTP server.

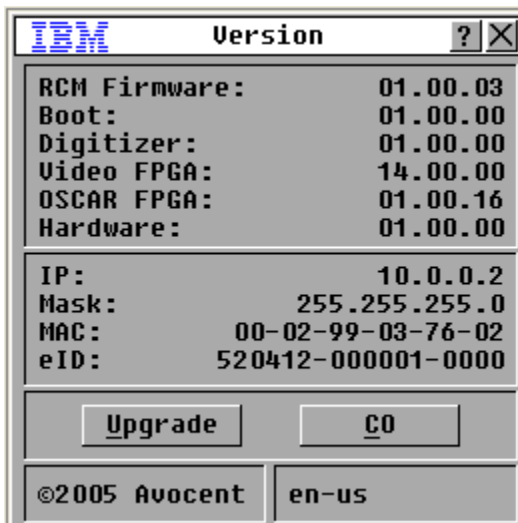
1. Press **Print Screen** to launch the OSCAR interface. The Main dialog box appears.



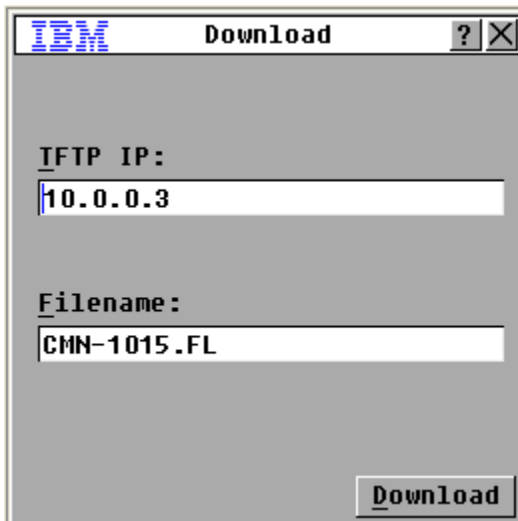
2. Click on Commands. The Commands dialog box appears.



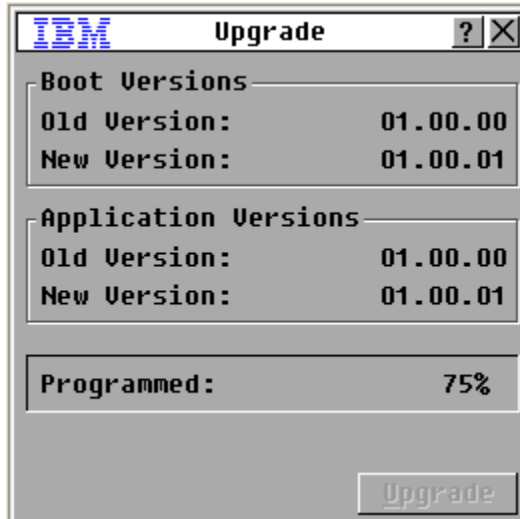
3. Click Display Versions



4. Click Upgrade. Type in the IP Address of the TFTP server where you have stored the firmware file. Type in the filename.



5. Click Download. When the firmware upgrade is complete, the LCM will reboot.



ADDITIONAL INFORMATION

Change History for emerson_fw_lcm8_lcm16_1.2.37.00_anyos_noarch

Contents

- 1.0 Enhancements
- 2.0 Problems Fixed

1.0 Enhancements

Version 1.2.37.00

- 1.7 Added support for IBM VCO3
- 1.6 Updated "Go Digital" images in On-Board-Web-Interface (OBWI)
- 1.5 Updated Trap MIB to have consistent IBM naming convention

Version 1.2.32.00

- 1.4 There are no enhancements in the version
-

Version 1.2.30.00

1.3 There are no enhancements in the version

Version 1.2.29.00

1.2 There are no enhancements in the version

Version 1.2.27.00

1.1 - Initial release.

2.0 Problems Fixed

Version 1.2.37.00

2.7 Fix for license key and launching Java video viewer issues with Chrome/Safari browsers.

2.6 Fix for black/flickering OSCAR screen when switching between servers.

Version 1.2.32.00

2.5 The mu key doesn't work on the Japanese UltraNav keyboards. The LCM did not properly map the Mu key when converting USB key codes to internal keyboard events.

Version 1.2.30.00

2.4 Fix for nonfunctional ACI port in Version 1.2.29

Version 1.2.29.00

2.3 - Yen and slash keys on Japanese keyboard do not work when connected to LCM8 or LCM16

2.2 - Shifted video with IBM x3650 server and IBM LCD tray.

Version 1.2.27.00

2.1 - Initial release.

4.0 UPDATE PROCEDURE:

4.1 LCM8, LCM16, Refer LCM8, 16 Installation and User Guide.

4.2 GCM16, GCM32, Refer to GCM16, 32 Installation and User Guide.

5.0 WEB Sites and Support Phone Number

5.1 IBM Support Web Site:

<http://www.pc.ibm.com/support>

5.2 IBM Marketing eserver Web Site:

<http://www.ibm.com/eserver/xseries>

5.3 If you have any questions about this update, or problems applying the update go to the following Help Center World Telephone Numbers URL: 800-IBM-SERV (800-426-7378)
<http://www.pc.ibm.com/qtechinfo/YAST-3P2QYL.html>.

5.4 IntelliStation web site:

www.pc.ibm.com/intellistation

6.0 Trademarks and Notices

6.1 The following terms are trademarks of the IBM Corporation in the United States or other countries or both: IBM, NetBAY

6.2 Windows is a trademark of Microsoft Corporation.

6.3 Linux is a trademark of Linus Torvalds.

6.4 Other company, product, and service names may be trademarks or service marks of others.

7.0 Disclaimer

7.1 THIS DOCUMENT IS PROVIDED "AS IS" WITHOUT WARRANTY OF ANY KIND. IBM DISCLAIMS ALL WARRANTIES, WHETHER EXPRESS OR IMPLIED, INCLUDING WITHOUT LIMITATION, THE IMPLIED WARRANTIES OF FITNESS FOR A PARTICULAR PURPOSE AND MERCHANTABILITY WITH RESPECT TO THE INFORMATION IN THIS

DOCUMENT. BY FURNISHING THIS DOCUMENT, IBM GRANTS NO LICENSES TO ANY PATENTS OR COPYRIGHTS.

7.2 Note to Government Users

Include the following note after the disclaimer paragraph.

Note to U.S. Government Users -- Documentation related to restricted rights -- Use, duplication or disclosure is subject to restrictions set forth in GSA ADP Schedule Contract with IBM Corporation.