

Read Me SP6 PDU Flash Tool v2.0

Firmware to be upgraded:

The firmware file is “*.mot”, please contact Eaton to get the latest version.

Method:

Step 1. Using the DB-9 to RJ-45 cable connect your workstation/laptop to the PDU.

Step 2. Set the DIP switch to ON/ON and press the reset button on the PDU.

Step 3. Execute “MCUFlash.exe”, and you will see the window as Figure 1.

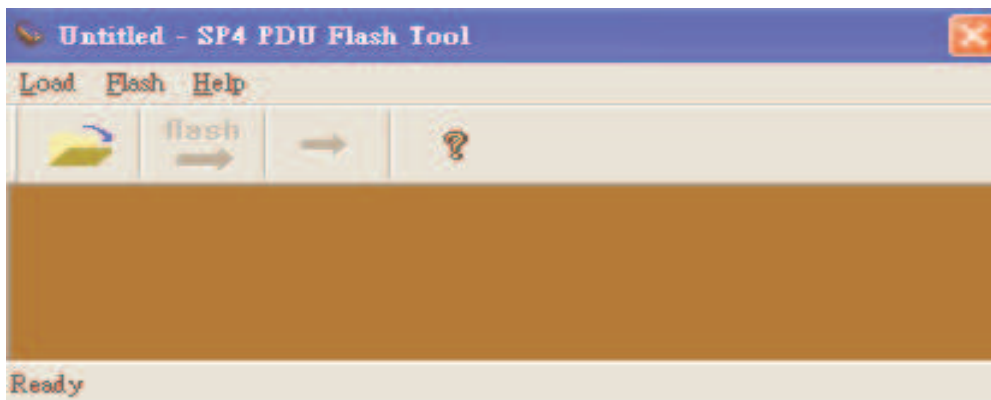


Figure 1. Initial window.

Step 4. Choose “Load\Open” in the menu or press the button in the toolbar (as Figure 2) to load the *.mot which you want to flash into the SP6 PDU. After loading *.mot, you will see the message to remind you to check the file name.(Figure 3)

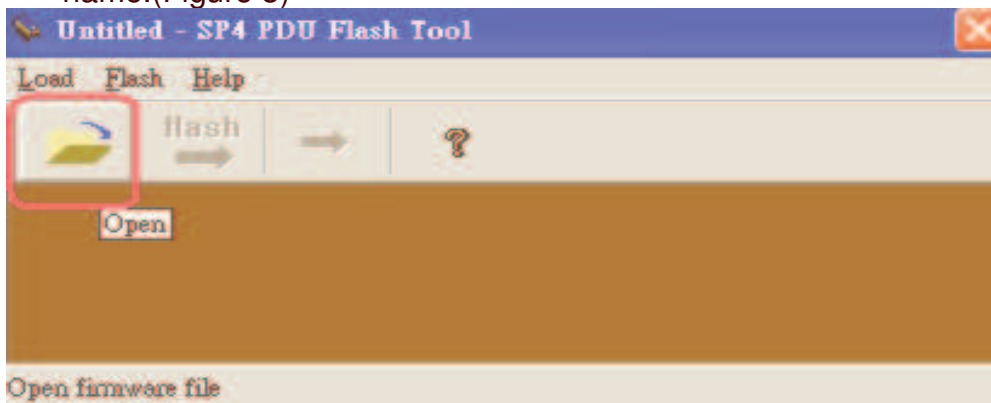


Figure 2. Open button.

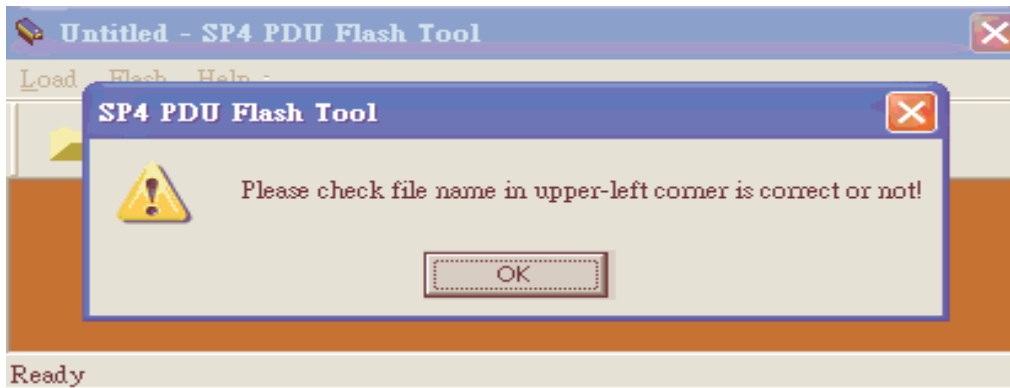


Figure 3

Step 5. Choose “Flash” in the menu or press the flash button in the toolbar (as Figure 4), and the flash tool will start the flash procedure.



Figure 4. Flash button.

Step 6. After a while, you will see the “programming.....” window as Figure 5. The complete percentage in the window shows progress of flash procedure. When flash process is running, the complete percentage will increase.

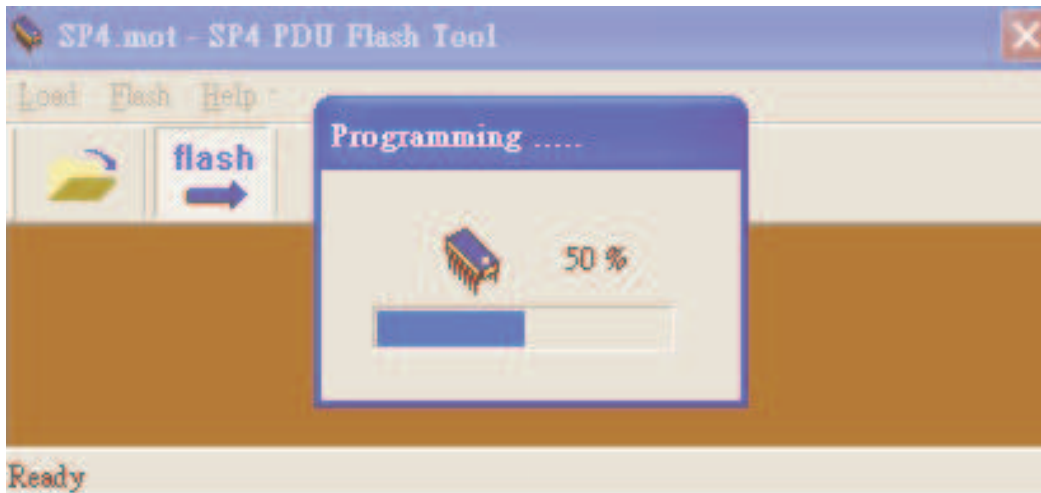


Figure 5. Progressing window.

Step 7. Just wait for a while. When complete percentage reaches 100%, it means the flash process is done. The message will show up as Figure 6.

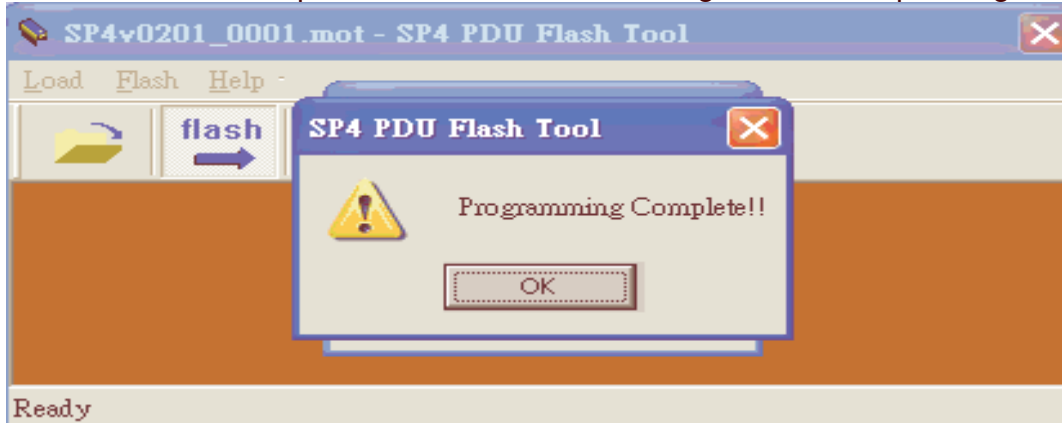


Figure 6. Programming complete window.

Step 8. Once programming has completed successfully, set the DIP switches to OFF/OFF and press the reset button on the PDU.

Notes.

When the programming process is interrupted or unsuccessfully, please wait a moment. Then you can press the red arrow button (as Figure 7) to restart the flash process.



Figure 7. Red Arrow button

Error Messages:

*** File Open fail**

(Check the *.mot file if it is damaged.

*** Data is not ready. Please load firmware file first ! (*.mot)**

(Load the *.mot first, or you cannot start the flash process.

*** The address of the data is Over 128K!! Please check your *.mot and load it again.**

(The *.mot file is over 128K.

*** Com 1 can not be opened, please close other applications.**

(Maybe some applications use COM1, please close those applications.

*** Can't communicate with UPS, please check the RS232 cable connection.(Error #2)**

(COM1 port is disconnected.

*** Can't communicate with UPS, please check the RS232 cable connection.(Error #5)**

*** Can't communicate with UPS, please check the RS232 cable connection.(Error #6)**

*** Can't communicate with UPS, please check the RS232 cable connection.(Error #7)**

(COM1 port is disconnected.

Error #5: Sent data address and data size already, but SP4 has no response

Error #6: Not receive XON(0x11)

Error #7: SP4 has no response.

*** Programming fail!!**

(The data sent by AP is not the same as ones received by UPS.

(Not receive ACK(0x06) or XON(0x11)

*** User interrupt and programming process error!! Please restart the flash program.**

(Please wait for a moment, then you can press the red arrow button to restart flashing.

*** Programming completed!! The data sent by AP is not the same as ones received by UPS.**

(The selected firmware is upgraded successfully.