

Applicable IBM Power Distribution Units (PDU)

The firmware code in this package applies to the following IBM Power Distribution (PDU) Units.

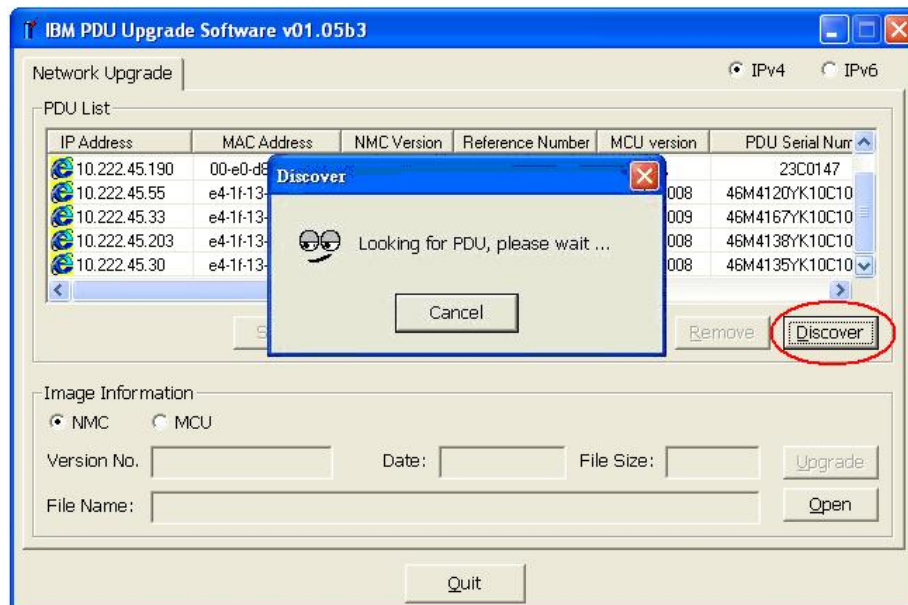
PDU name	Order part numbers
IBM 0U C19 / C13 Switched and Monitored PDU	46M4134 46M4135 46W1573 46M4136 46W1574 46M4137 46M4138 46W1575 46M4139 46W1576
IBM 0U C13 Switched and Monitored PDU	46M4116 46M4117 46W1561 46M4118 46W1562 46M4119 46M4120 46W1563 46M4121 46W1564
IBM 1U Switch and Monitored PDU C19 / C13 3 phase	46M4167 46M4168 46W1581 46M4169 46W1582

Note: The PDUs have the following connectors:

- IBM 0U C19 / C13 Switched and Monitored PDU – 12x C19, 12x C13
- IBM 0U C13 Switched and Monitored PDU – 24x C13
- IBM 1U Switch and Monitored PDU C19 / C13 3 phase – 9x C19, 3x C13

IBM PDU Firmware Upgrade Procedure

1. Run the "IBM_PDU_Upgrade.exe" to upgrade the firmware via your Network. Press Discover button to find IBM PDUs on your network.

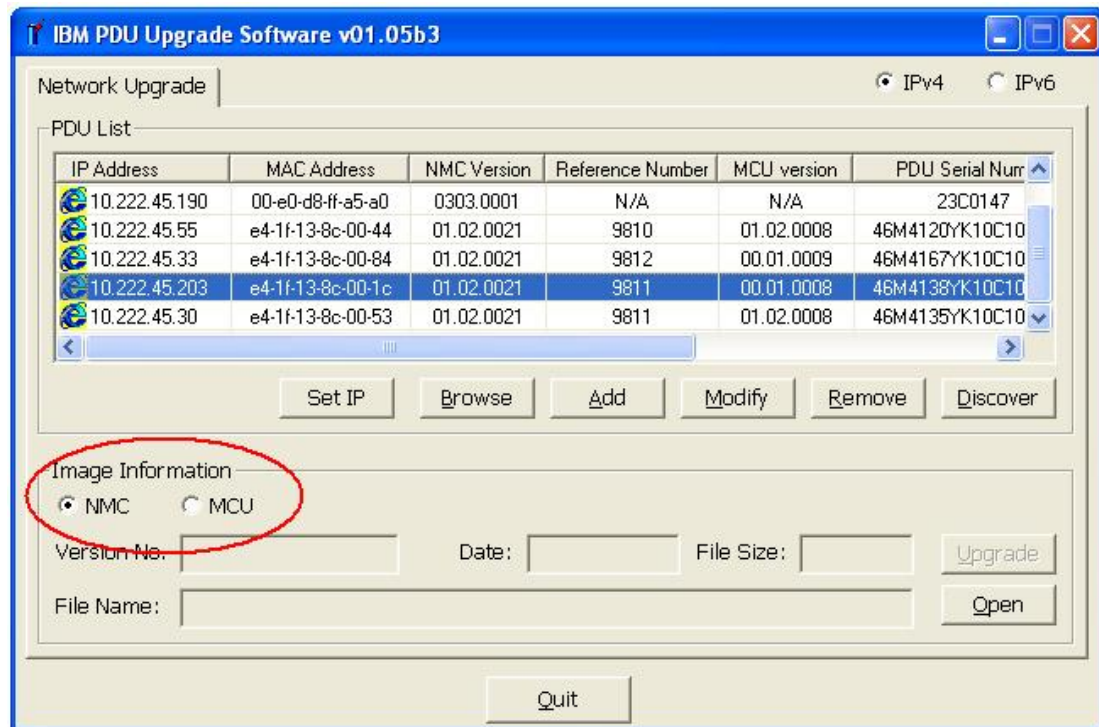


NOTE: you may need to click Discover a couple of times to find all PDU's depending on the latency of the network

2. Double click on the IBM PDU you would like to upgrade and then enter the user name and password for each. By default it is set to "USERID" and "passw0rd". (with the number zero instead of the letter O)

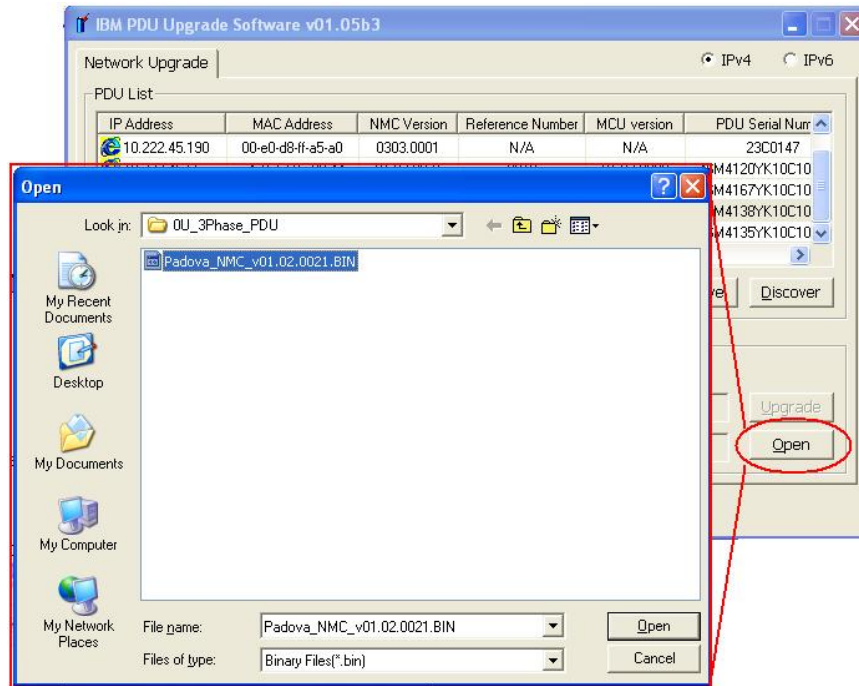


3. Next select which processor firmware you would like to upgrade, either MCU or NMC. By default NMC is selected but you can upgrade either processor in any order. Just be sure to select the correct file in the next step.

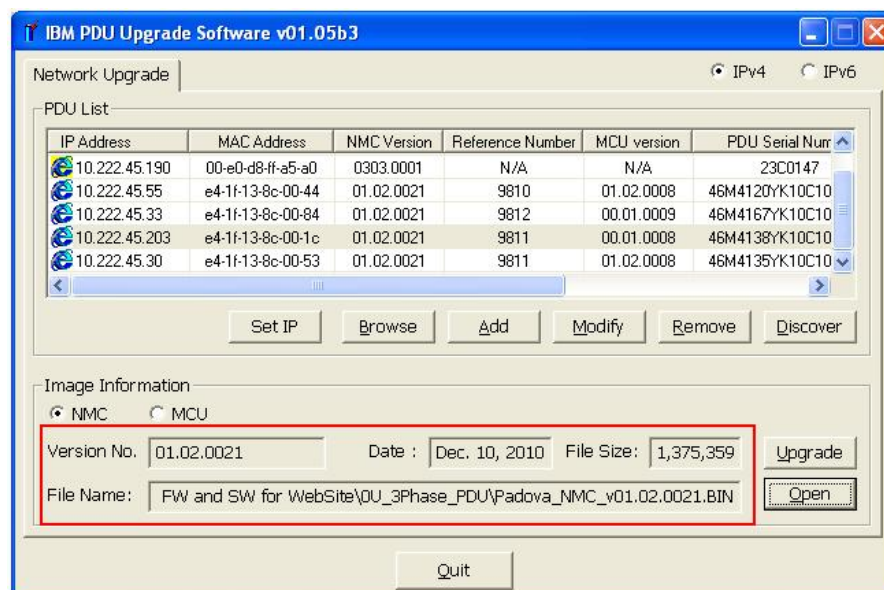


4. Select the firmware file by clicking on the "Open" button and then selecting the appropriate firmware file based on your selection in step 3 either MCU or NMC.

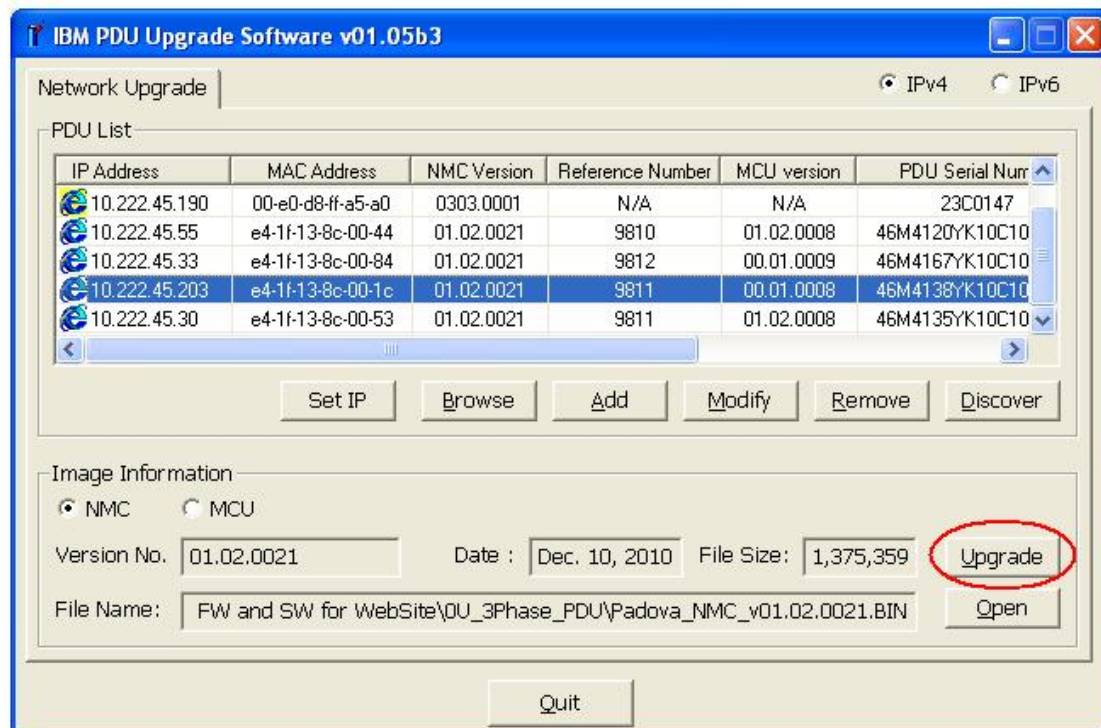
NOTE: The NMC Firmware file name ends in ".BIN" and the MCU Firmware file name ends in ".s19". Be sure to check the readme.txt file with the FW to ensure compatibility with your PDU.



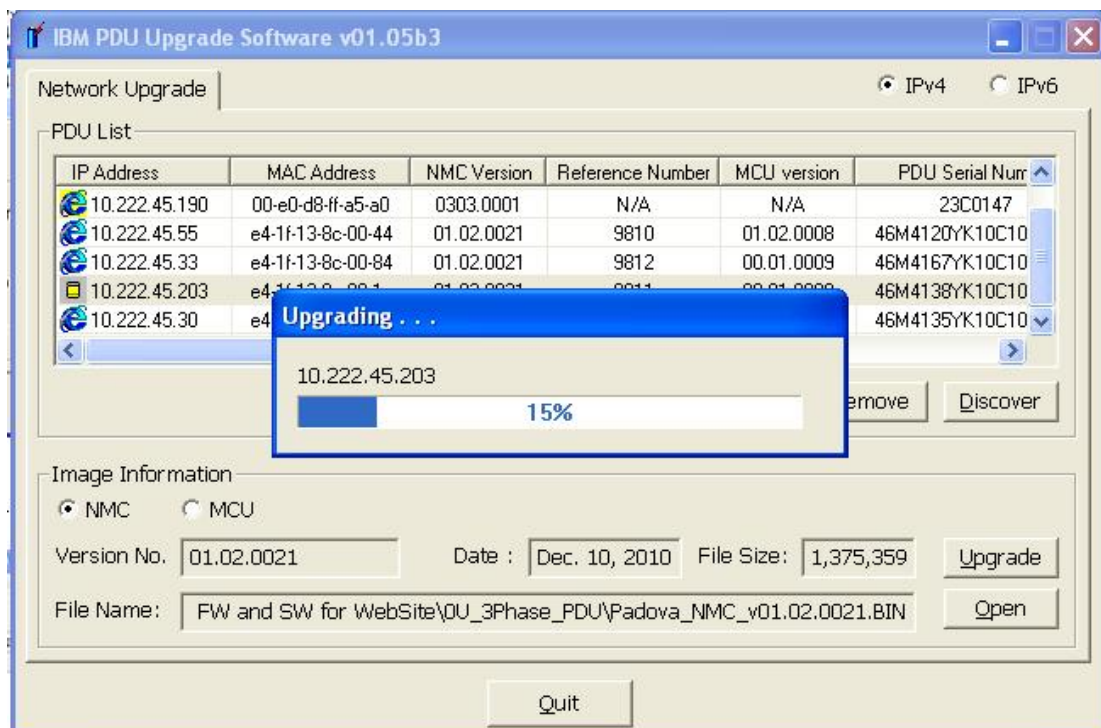
Once the firmware file has been selected, the firmware file details are displayed in the lower section of the upgrade tool as shown below.



5. Click “Upgrade” button to begin the Firmware Upgrade process.

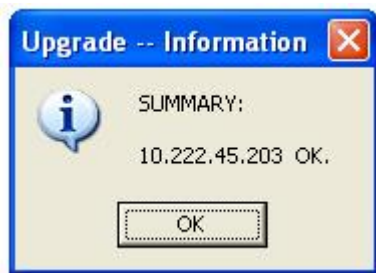


During the upgrade process a progress bar will be displayed.



NOTE: The PDU interface may be offline during the upgrade process however it will auto recover once the upgrade has completed.

6. Once the upgrade completes a message similar to the one below will be displayed and the PDU web interface will automatically restart within 1 minute.



This firmware upgrade is complete.

To Upgrade another PDU with the same selected Firmware

- Double-click on the PDU from the list, enter the username and password and then click the Upgrade button again.

To Upgrade the second processor on the same PDU

- Restart the upgrade process from step 3 and select the alternate processor.