

TCR Cognos

Connections Setup Guide

Table of Contents

1 Introduction.....3

2 Prerequisites.....3

3 Setup.....4

 3.1 System ODBC Data Source Setup.....4

 3.2 Cognos/TCR Data Source Setup.....9

4 Viewing Cognos/TCR Data Sources & Connections.....14

1 Introduction

This guide shows you how to set up TADz data source connections in Cognos/TCR on a Windows environment.

2 Prerequisites

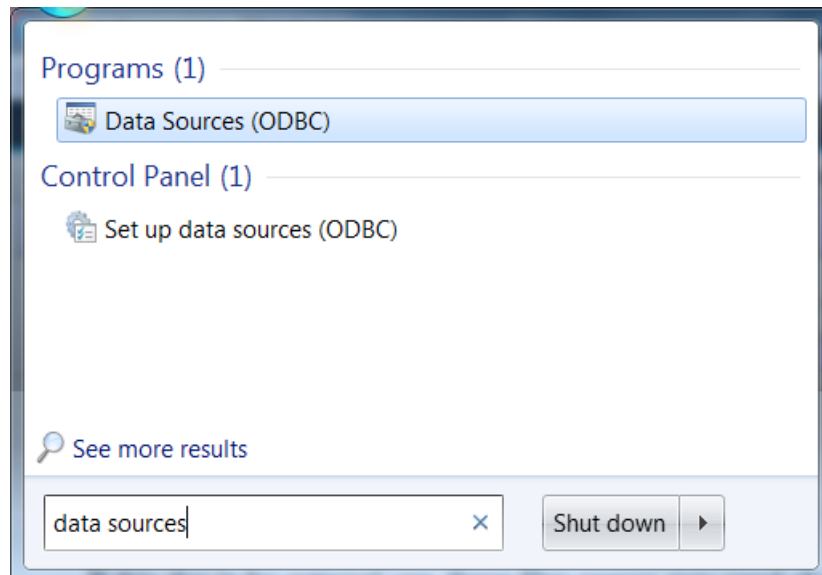
- A working installation of JazzSM along with Cognos/TCR component installed and running on a Windows desktop system.
- TADz installed and running with its own database.
- DB2 ODBC drivers installed.
- TADz databases running on a DB2 for z/OS system.
- PCOMM setup.

3 Setup

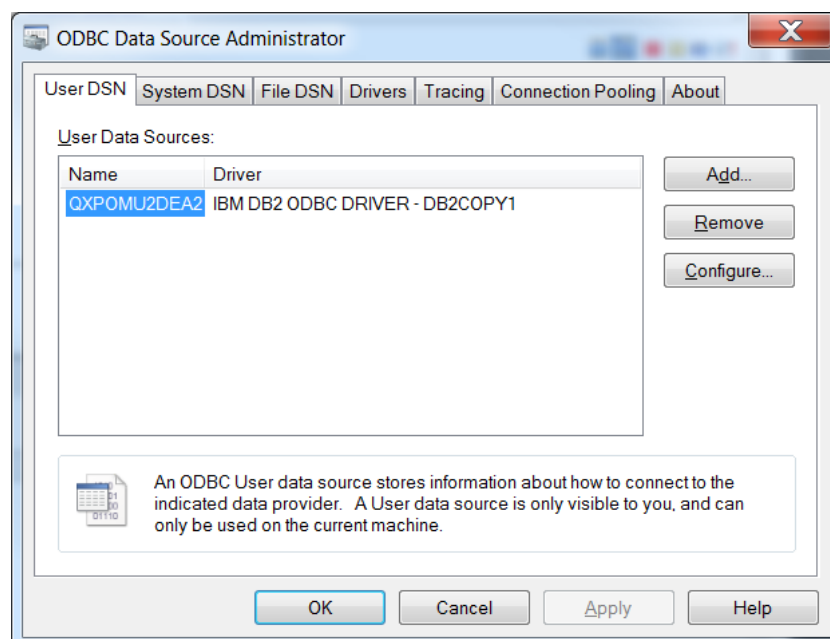
3.1 System ODBC Data Source Setup

Before setting up data source connections in Cognos/TCR, you must first set up a Windows user data source name (DSN).

1. Go to start menu and type in 'ODBC'
Alternatively, in the start menu, go to "All Programs" --> "Administrative Tools".
2. Click on "Data Sources (ODBC)".



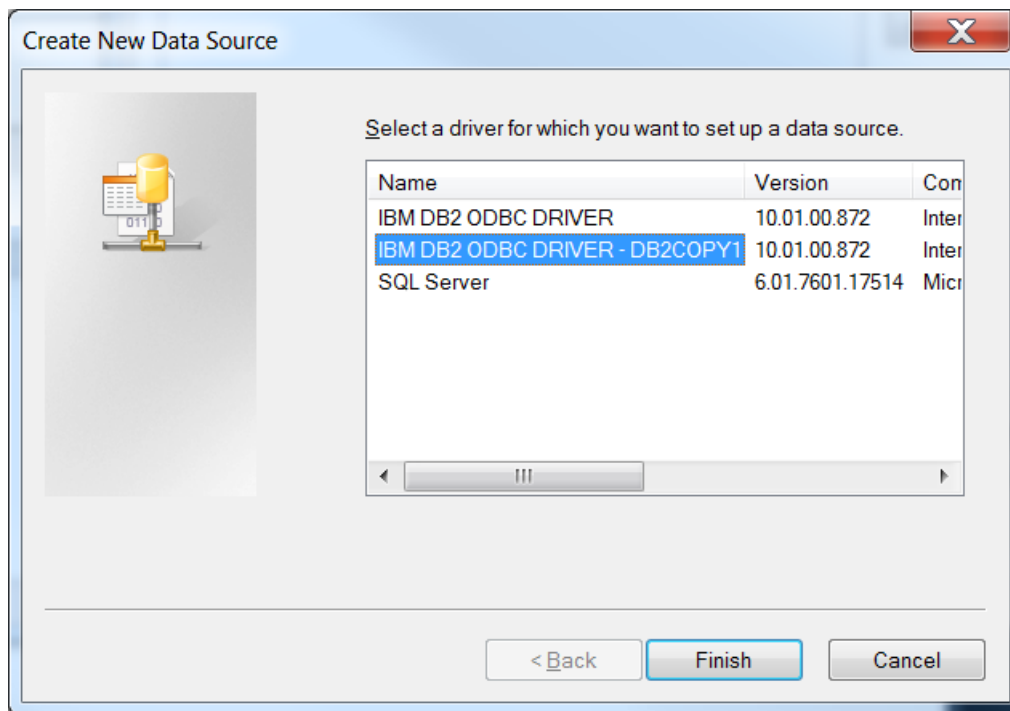
The Windows ODBC Data Source Administrator window will open. The screen shot below shows an existing data source entry.



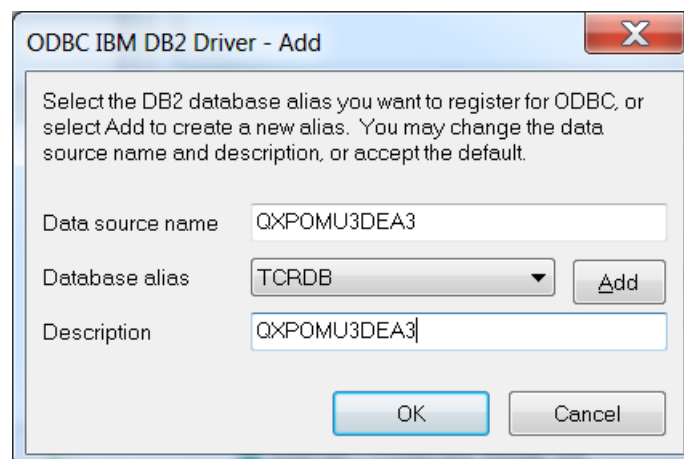
As an example, a new data source with the name "QXPOMU3DEA3" will be set up.

In the Data source Administrator window:

1. Navigate to the “User DSN” tab
2. Click on the “Add...” button.
3. A new window will open prompting you to select the driver.
4. Select a DB2 ODBC driver that is installed.
In this example, “IBM DB2 ODBC DRIVER – DB2COPY1” is chosen.

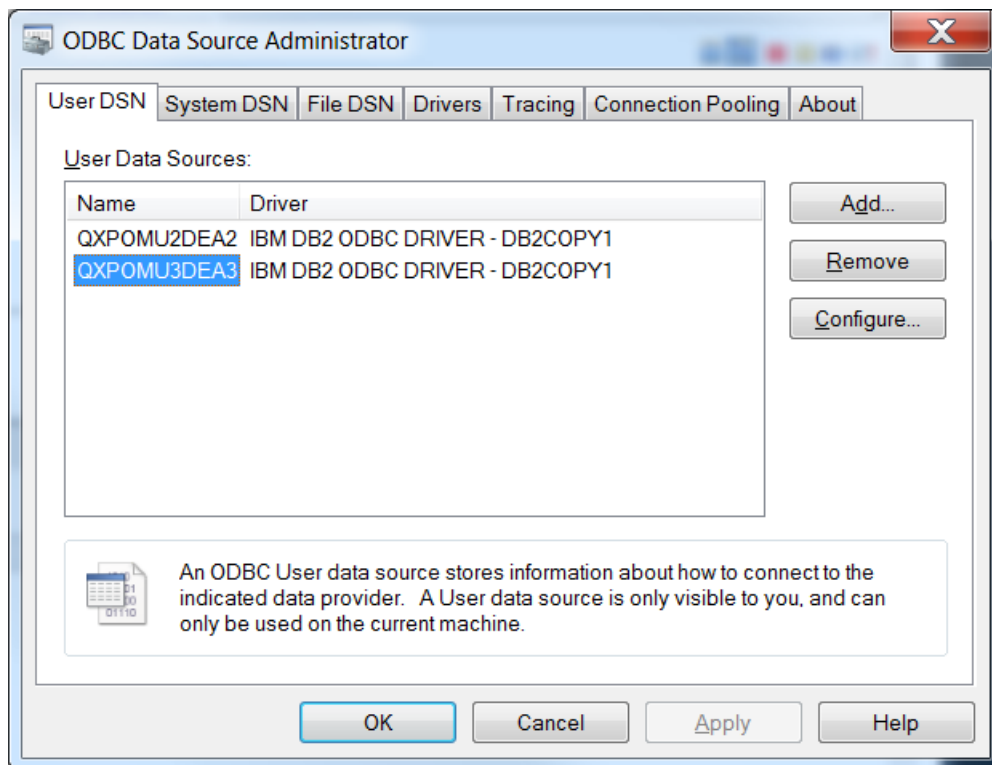


5. Click on “Finish”. A new prompt window will open up.

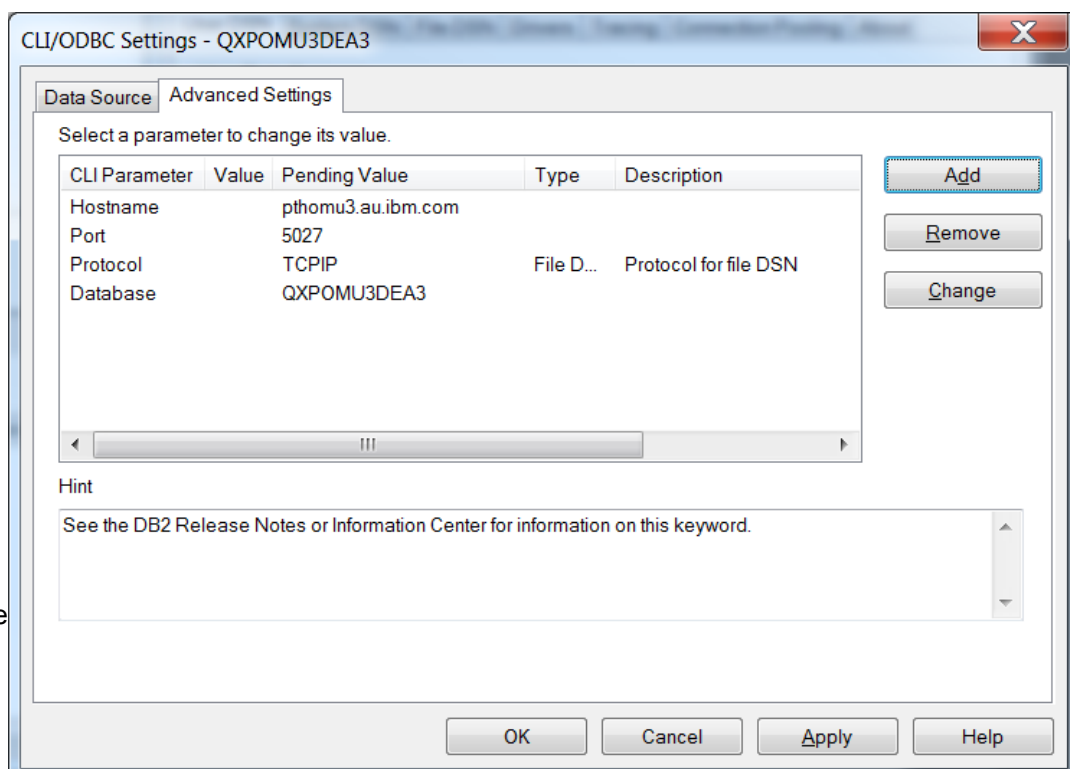


6. Fill in the data source name and description.
Ignore the “Database alias” field, it will be modified in the next step.
In this example, both the Data source name and Description are set to “QXPOMU3DEA3”.

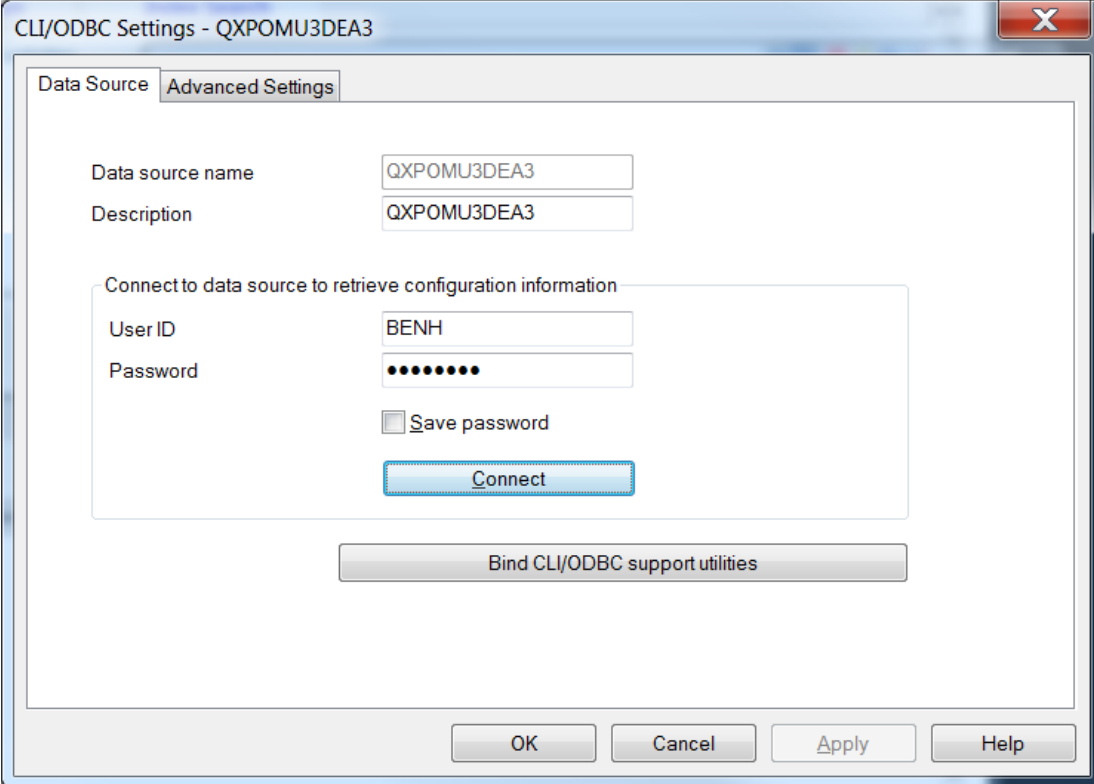
7. Click on the “OK” button to proceed. The prompt window will close and a new entry will appear in the ODBC Data Source Administrator window.



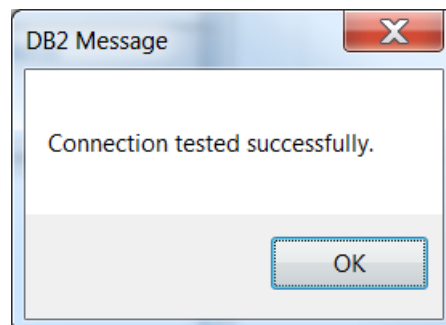
8. Select the new user DSN entry (QXPOMU3DEA3) that has been created
9. Click on the “Configure...” button on the right. A CLI/ODBC Settings window will open.



10. Return to the "Advanced Settings" tab and test the settings by entering the TSO user ID and password, then press "Connect". It should connect successfully if all the steps have been followed correctly.

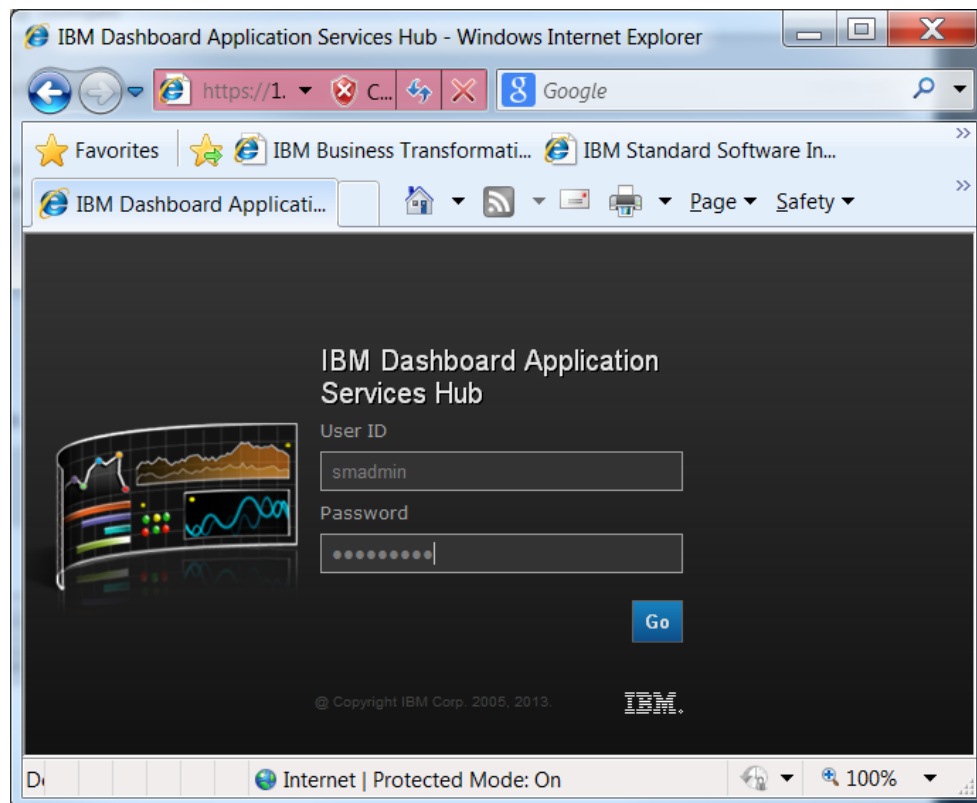


The image shows a Windows-style dialog box titled "CLI/ODBC Settings - QXPOMU3DEA3". It has two tabs: "Data Source" and "Advanced Settings", with "Advanced Settings" currently selected. Inside the "Advanced Settings" tab, there are two text input fields: "Data source name" containing "QXPOMU3DEA3" and "Description" also containing "QXPOMU3DEA3". Below these is a section titled "Connect to data source to retrieve configuration information" which contains a "User ID" field with "BENH" and a "Password" field with masked characters (dots). There is an unchecked checkbox labeled "Save password" and a "Connect" button. At the bottom of the dialog, there is a "Bind CLI/ODBC support utilities" button and a standard Windows button bar with "OK", "Cancel", "Apply", and "Help" buttons.

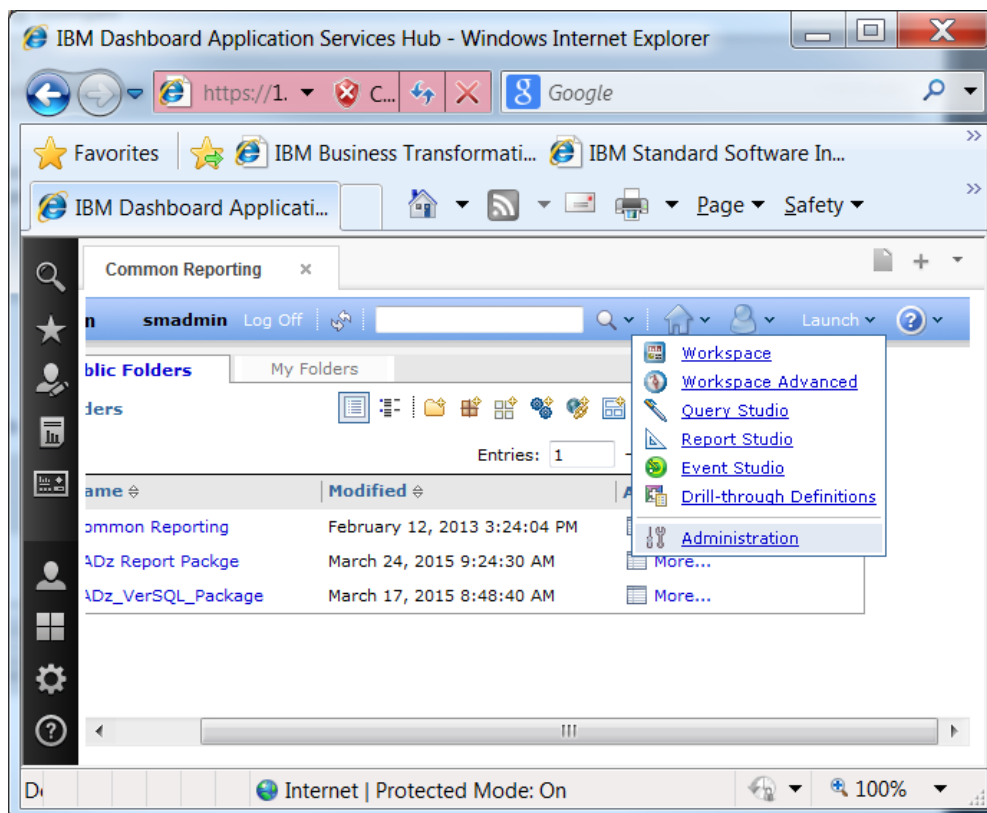
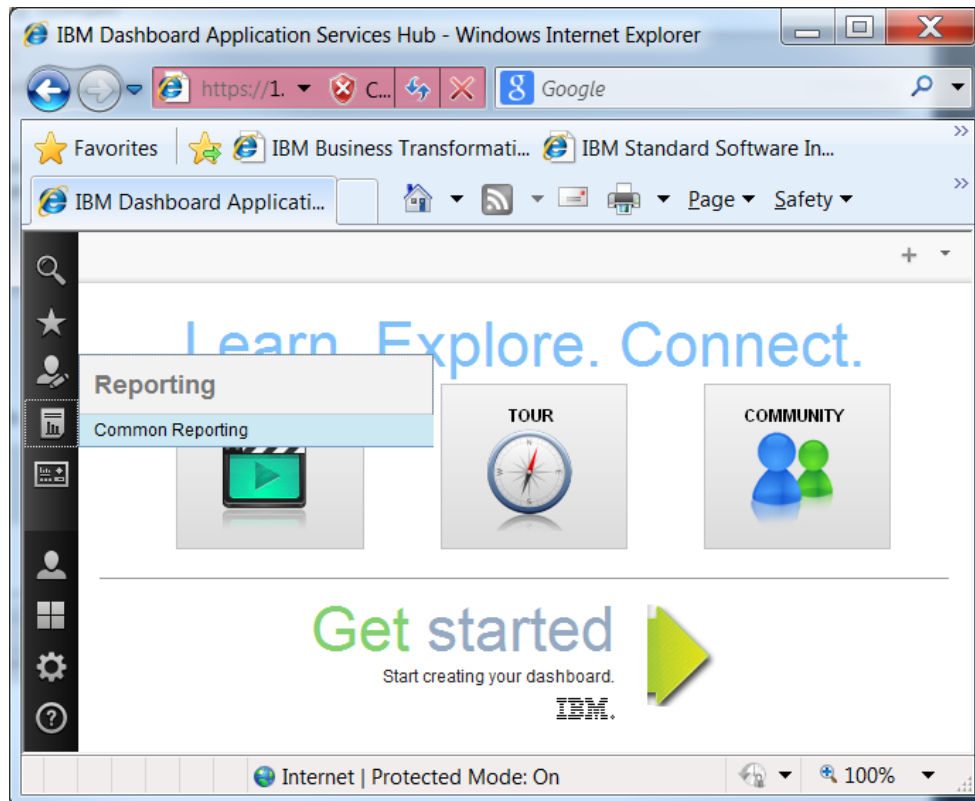


3.2 Cognos/TCR Data Source Setup

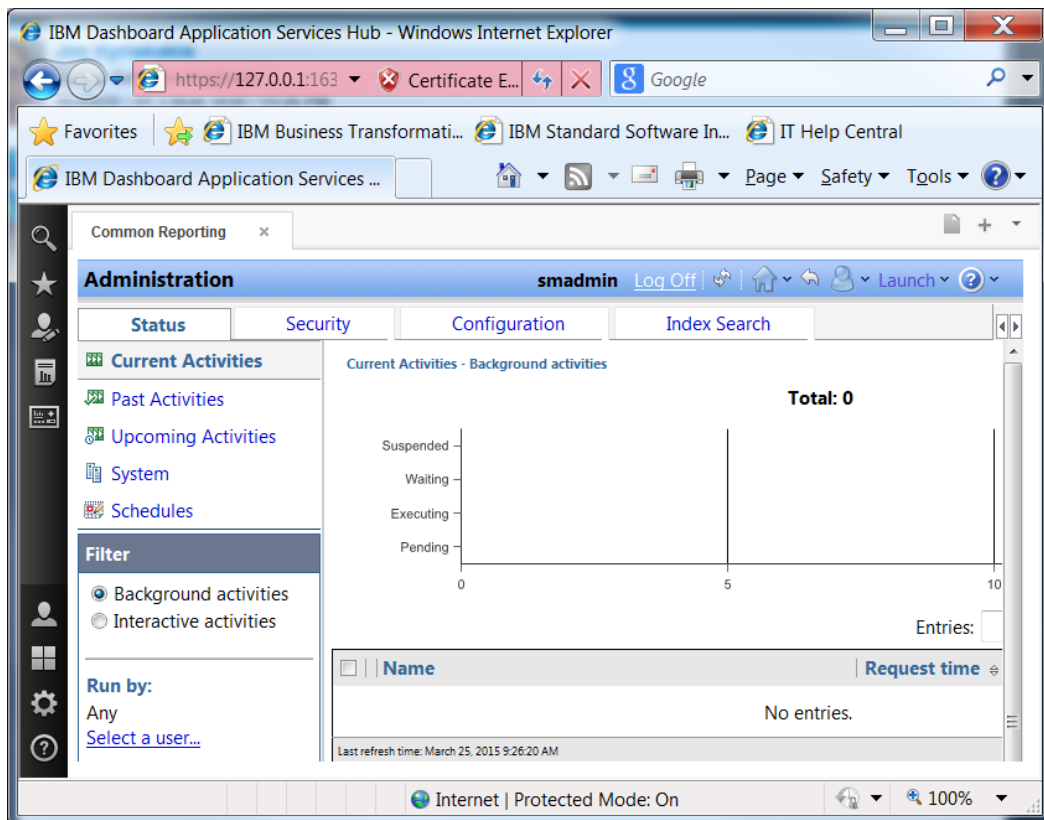
Open a web browser and browse to the JazzSM log-on URL and log on.



Upon authentication, select “Reporting” → “Common Reporting” on the left tools menu bar . The Common Reporting tab will open.



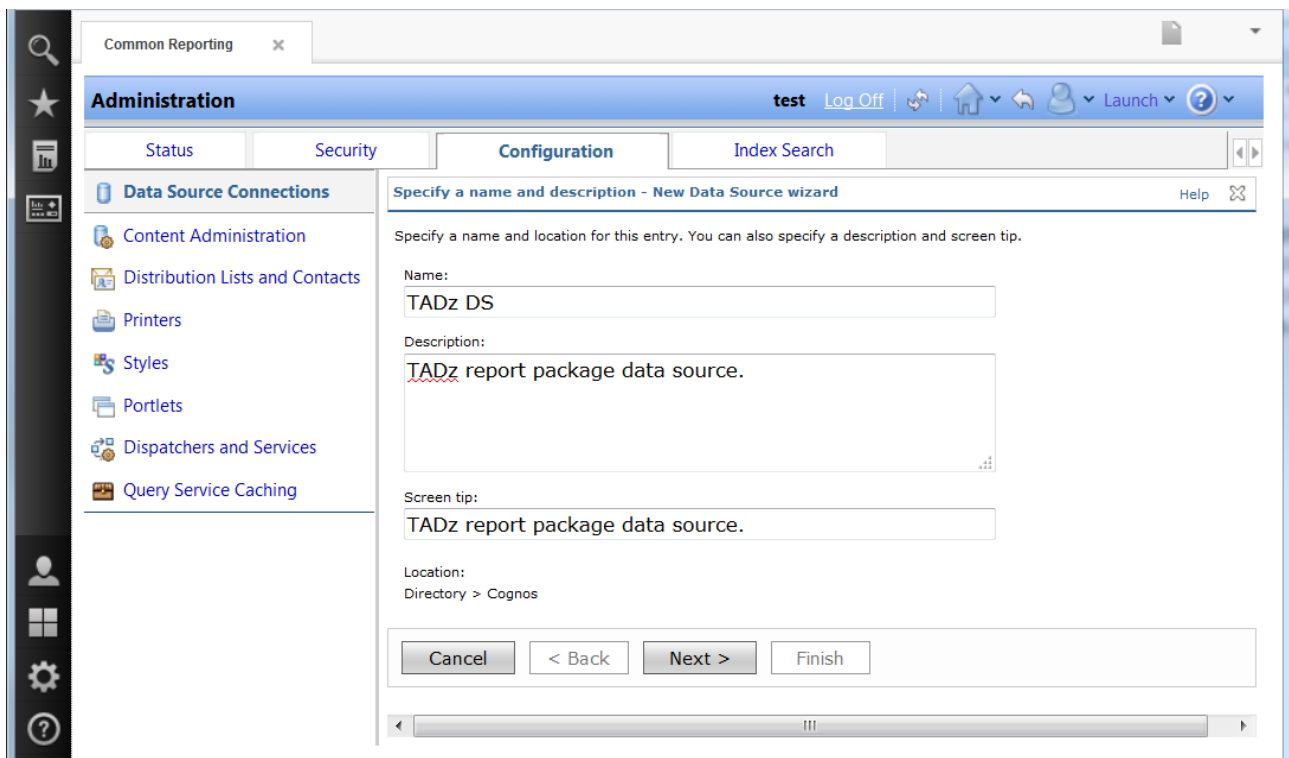
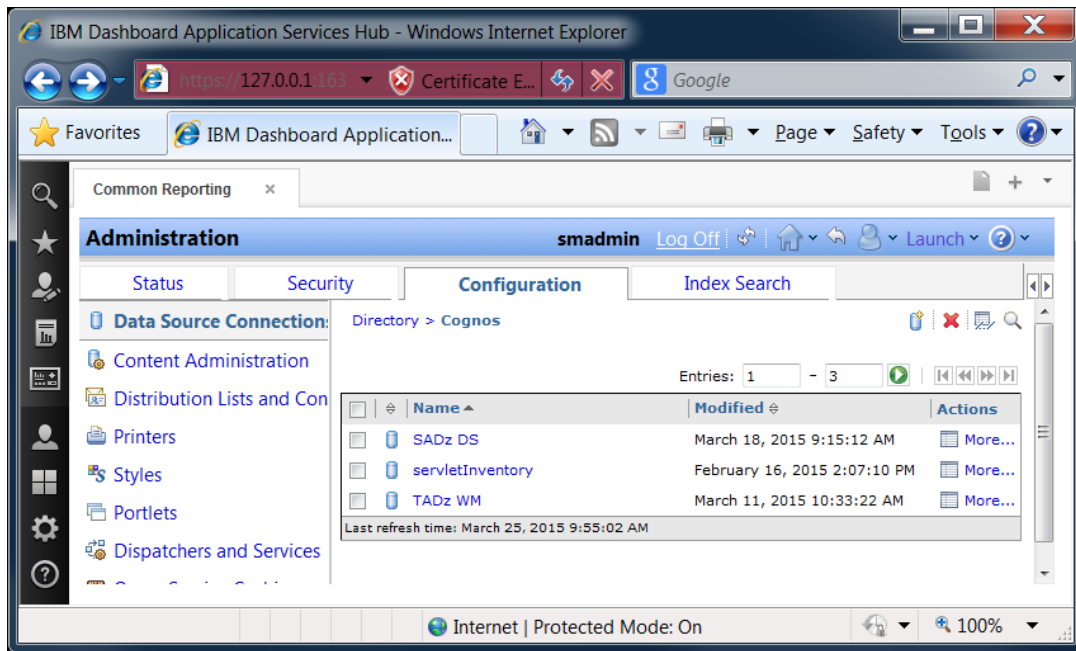
In Common Reporting, select “Launch” in the blue top menu bar, then select “Administration” in the drop down list. Common Reporting Administration page will open.

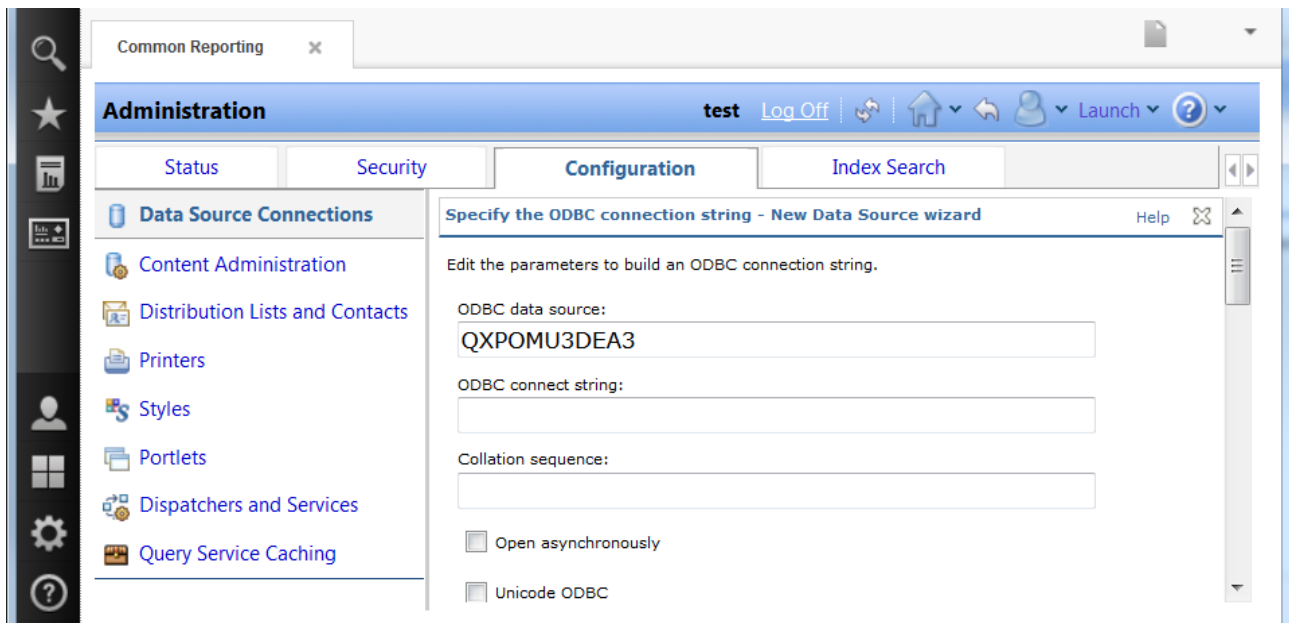
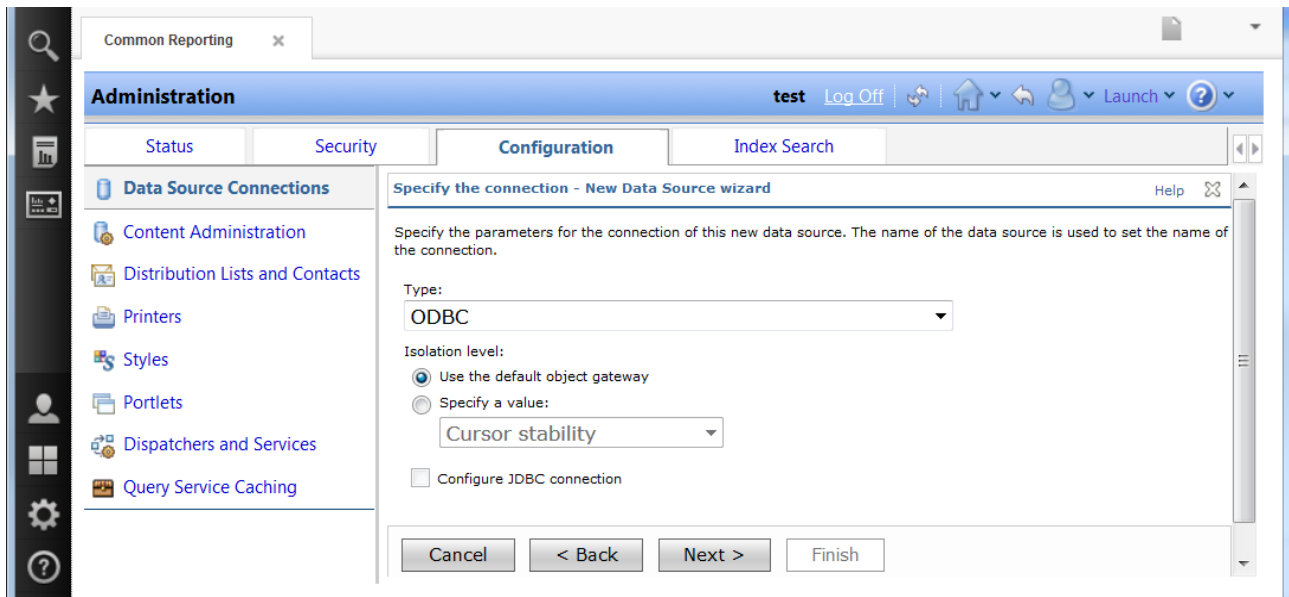


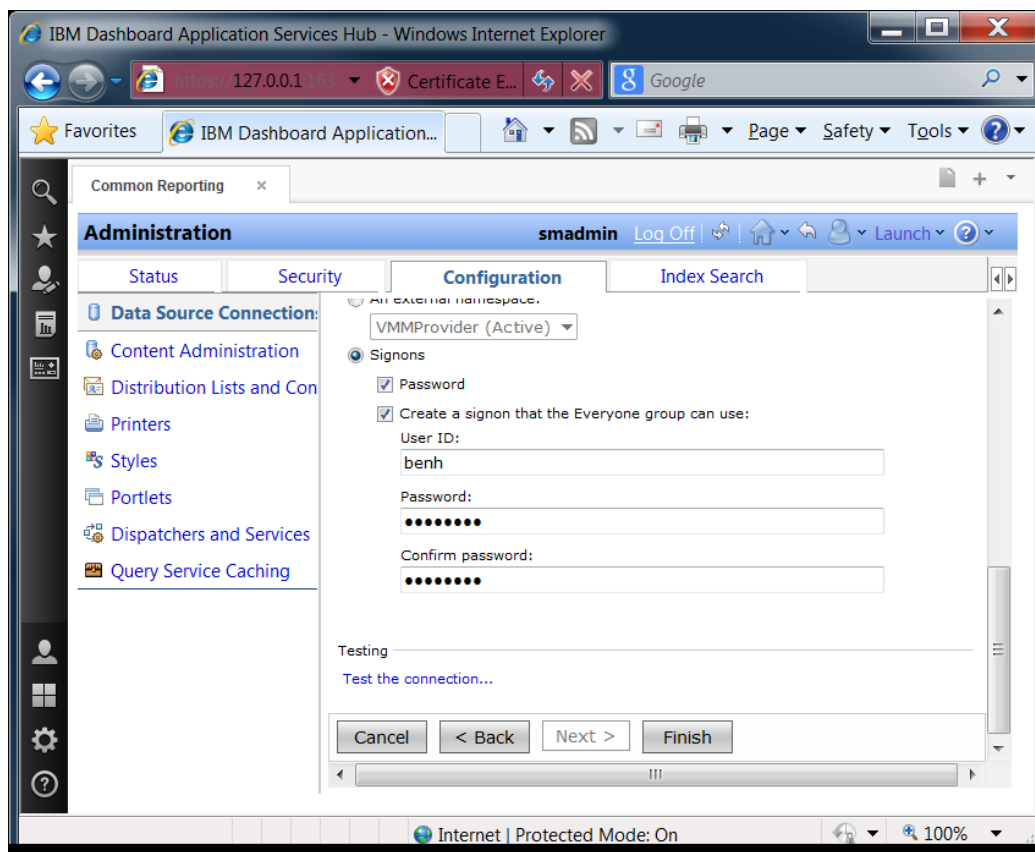
Select the “Configuration” tab below the blue top menu bar and then select “Data Source Connections” on the left. On the main panel a list of current data sources is displayed.

Note: a data source is a logical entity that contains a set of connections. Each connection is a connection to a database. A data source must match it's name with the one that is expected by the reports in a package. For the TADz Cognos reports, each connection in the Cognos/TCR data source references one ODBC DSN.

To create a new data source, click on the cylinder icon on the right below the tab bar. The data source set-up wizard guides the user through creating a data source, then a connection and its signon. Create a new data source with the name “TADz DS”.



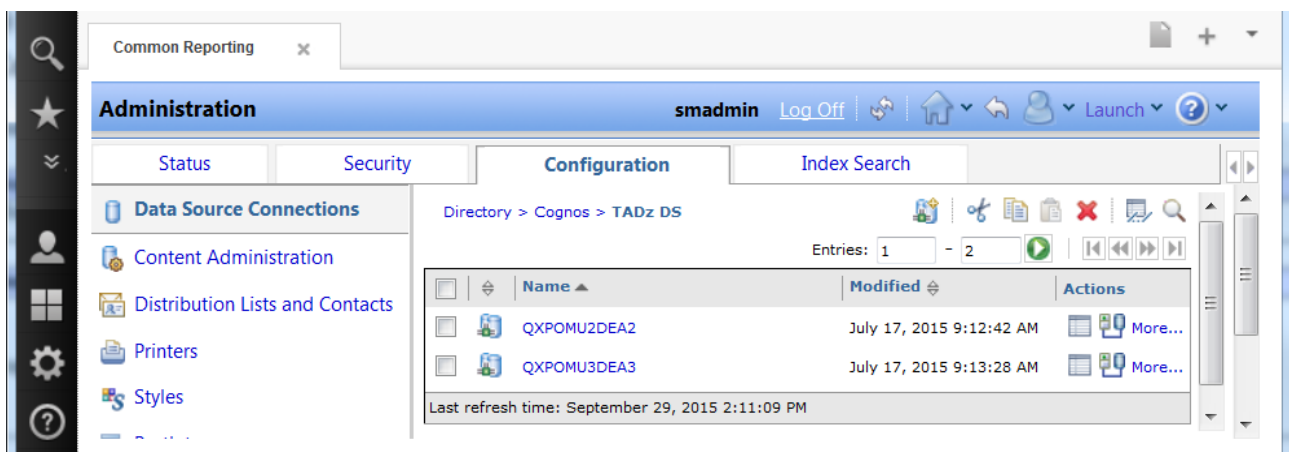
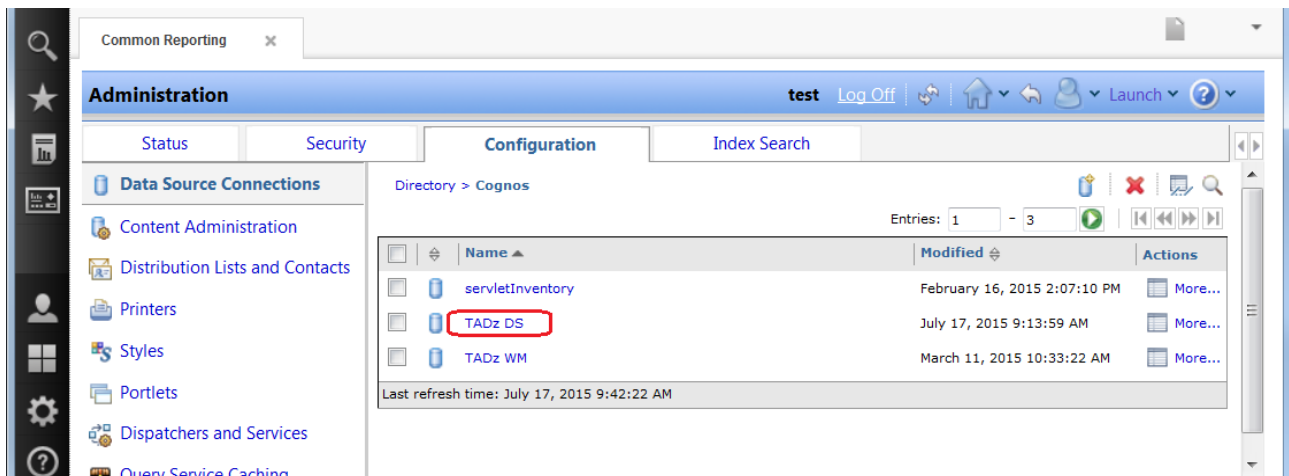




Once the setup wizard is completed, you are taken back to the list of current data sources. The TADz Cognos reports will now work.

4 Viewing Cognos/TCR Data Sources & Connections

To see the available connections inside a data source, click on the data source name.



In the screen shot above, two connections are already available inside the data source “TADz DS”. To add more connections, click on the cylinder icon below the tab bar(left hand side of the scissors icon). The steps are similar to creating a new data source.

When there is more than one connection in a single data source, whenever a report which uses “TADz DS” is executed, you will be prompted to select a data source first .