

Installation Instructions for
Capacity Planner for VMware
Version 7.2 FP2 IF1

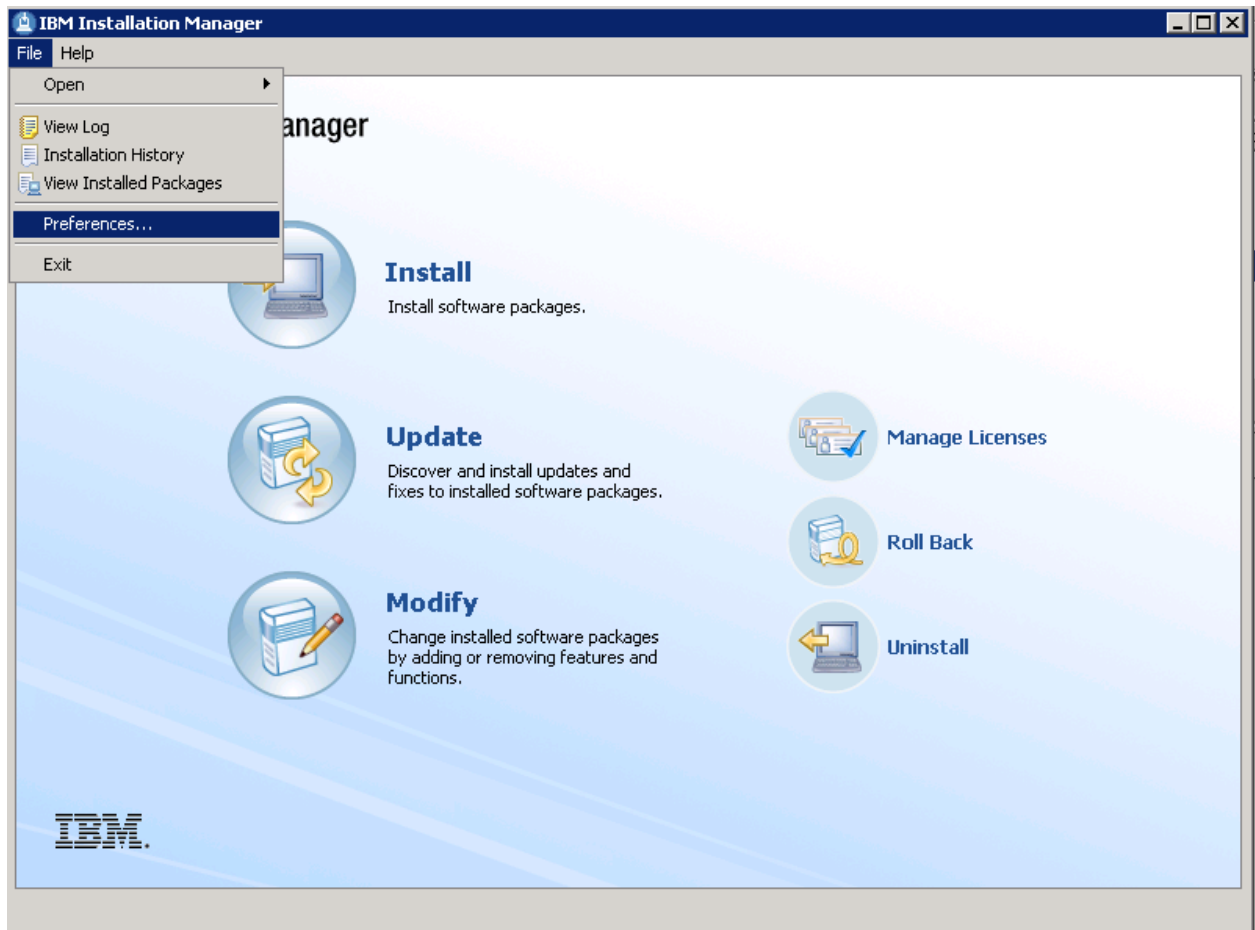
Table of Contents

Using the IBM Installation Manager to upgrade Capacity Planner for VMware	3
Console Installation for Capacity Planner for VMware 7.2 FP2 IF1	13

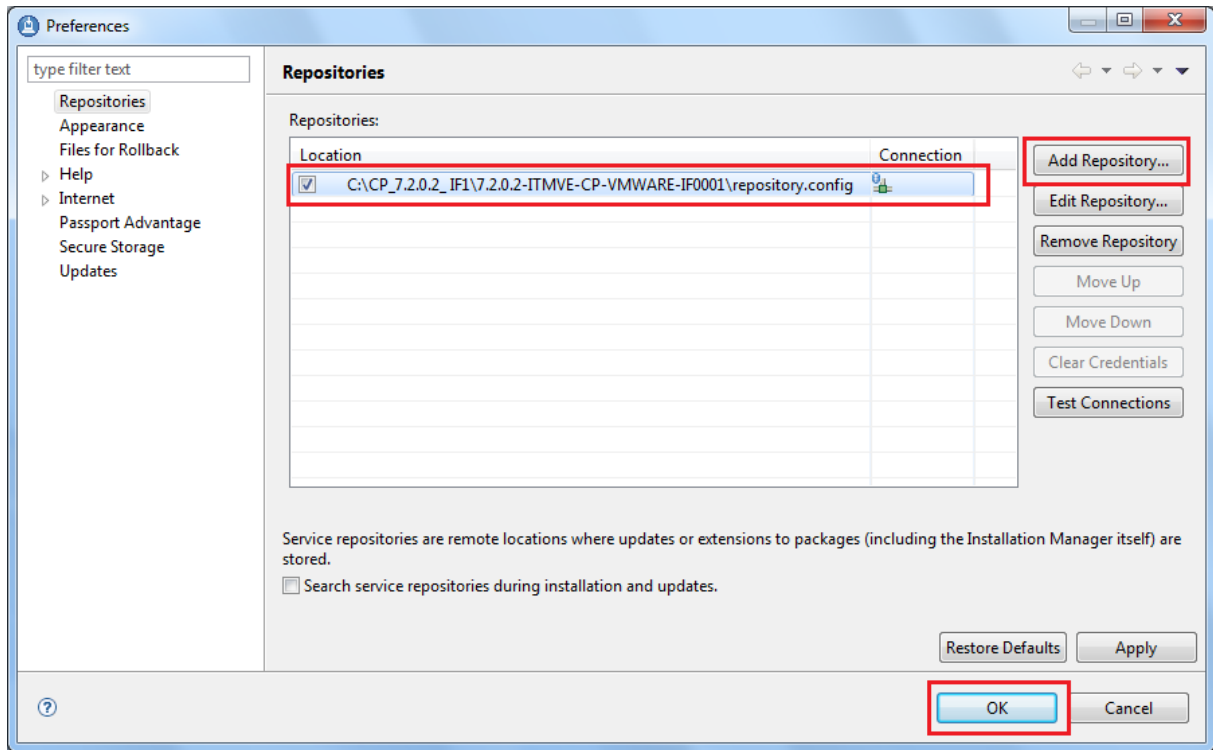
Using the IBM Installation Manager to upgrade Capacity Planner for VMware

Use the IBM Installation Manager to install the Capacity Planner 7.2 FP2 IF1.

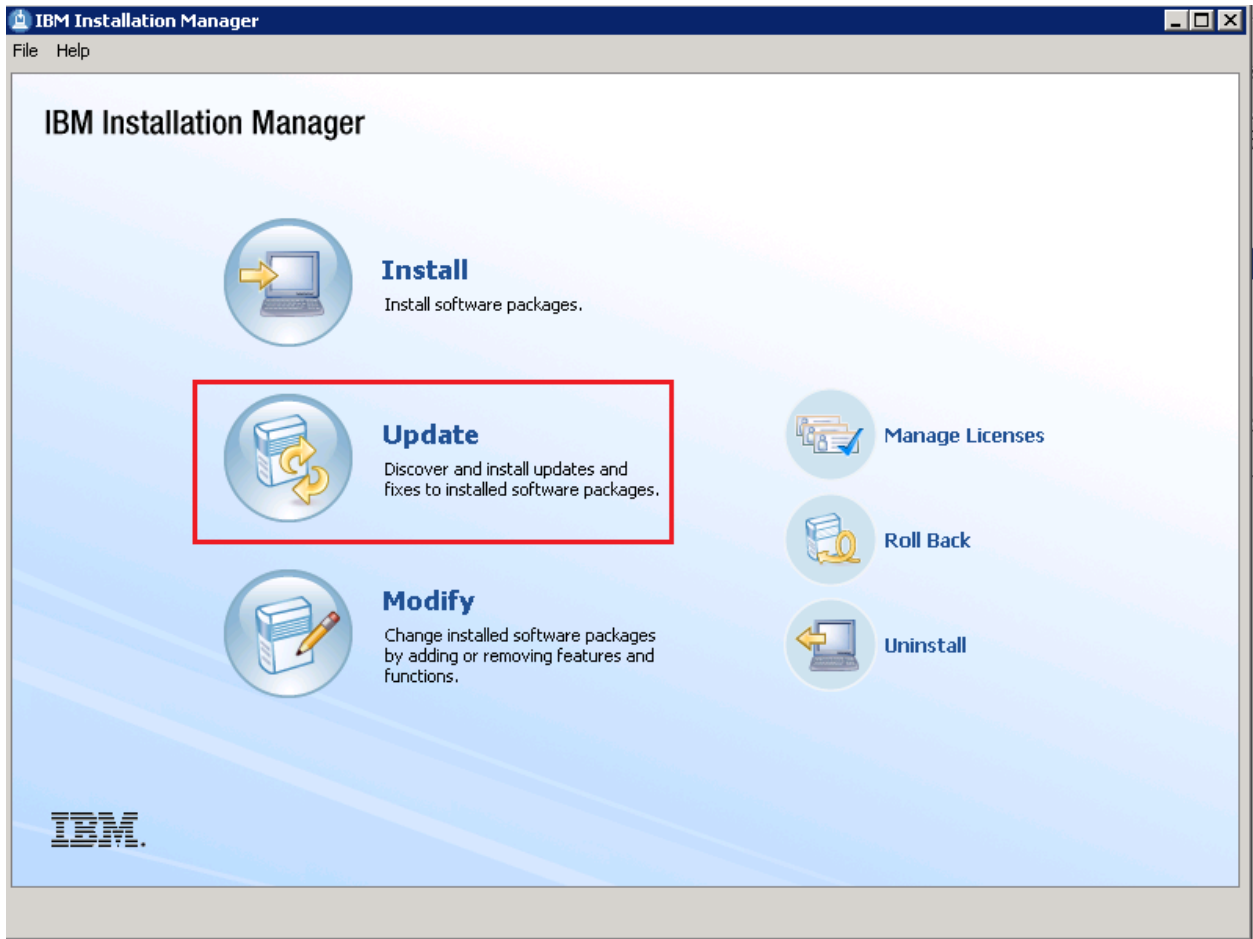
1. Open the IBM Installation Manager.
2. Click **File > Preferences**.



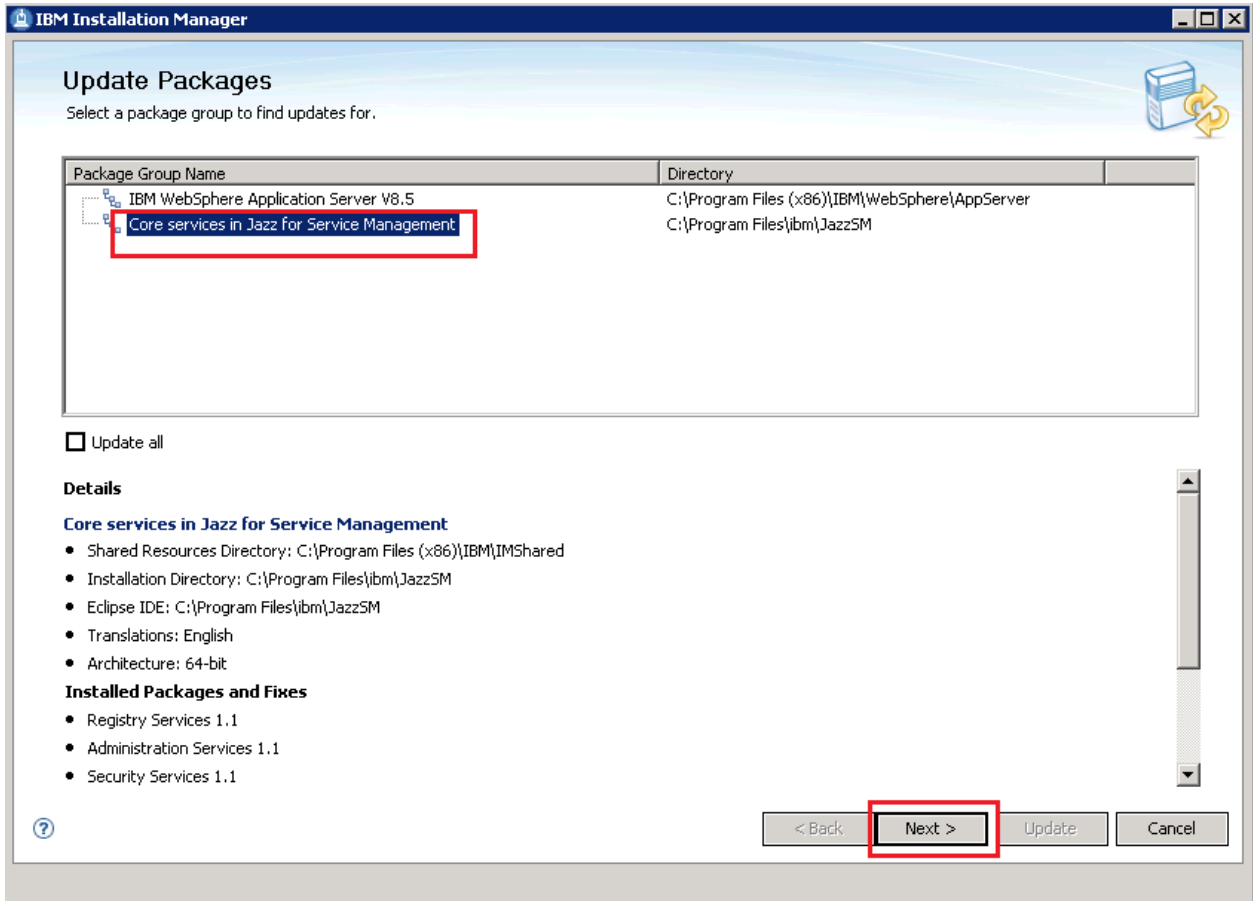
3. In the **Repositories** field, select the directory path that contains the `repository.config` file. This is the repository file for the installation.
4. Click **Add Repository**, and then click **OK**.



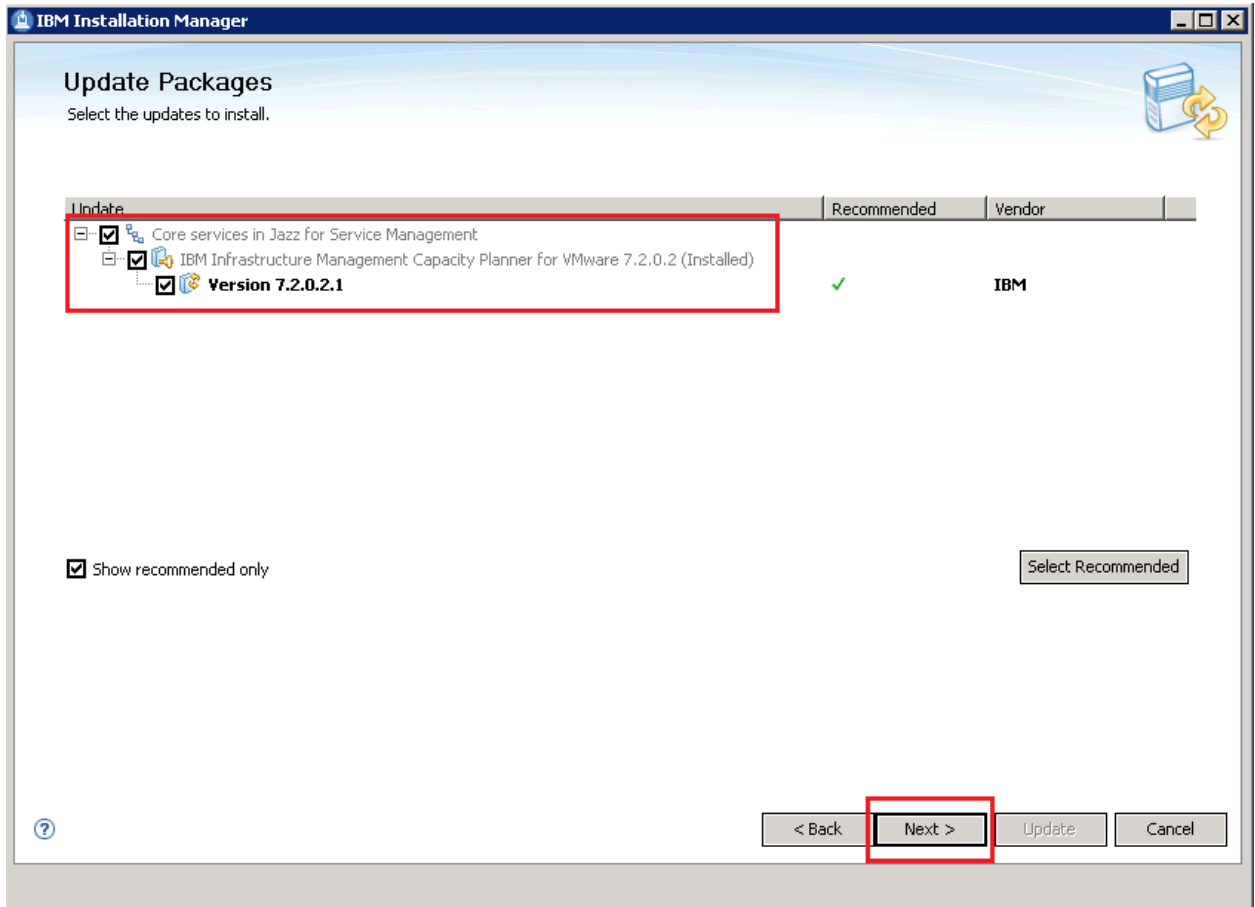
5. In the IBM Installation Manager window, click **Update**. The Update Packages window opens.



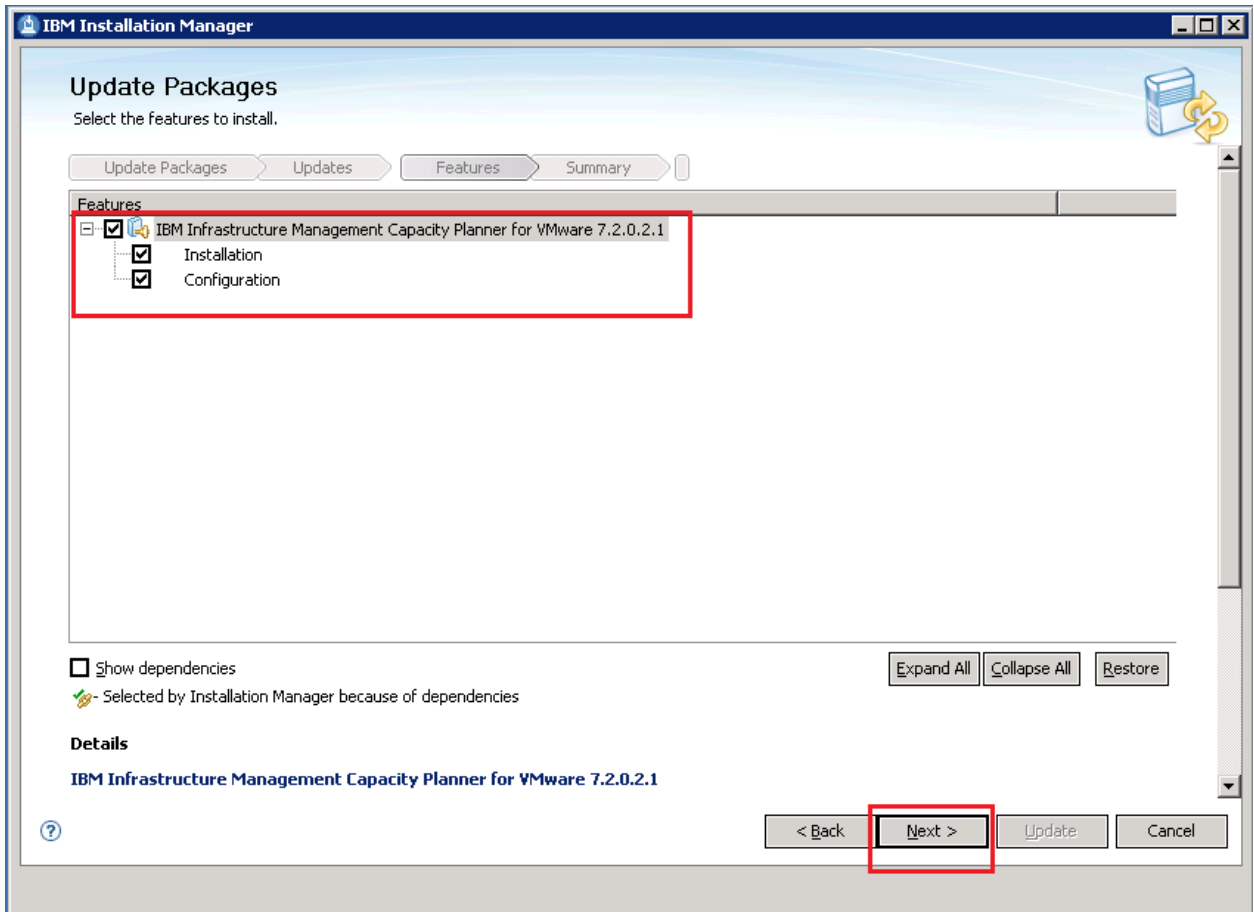
- From the **Package Group Name** list, select **Core Services in Jazz for Service Management**, and then click **Next**.



- From the **Update** list, select **IBM Infrastructure Management Capacity Planner for VMware** and Click **Next**.

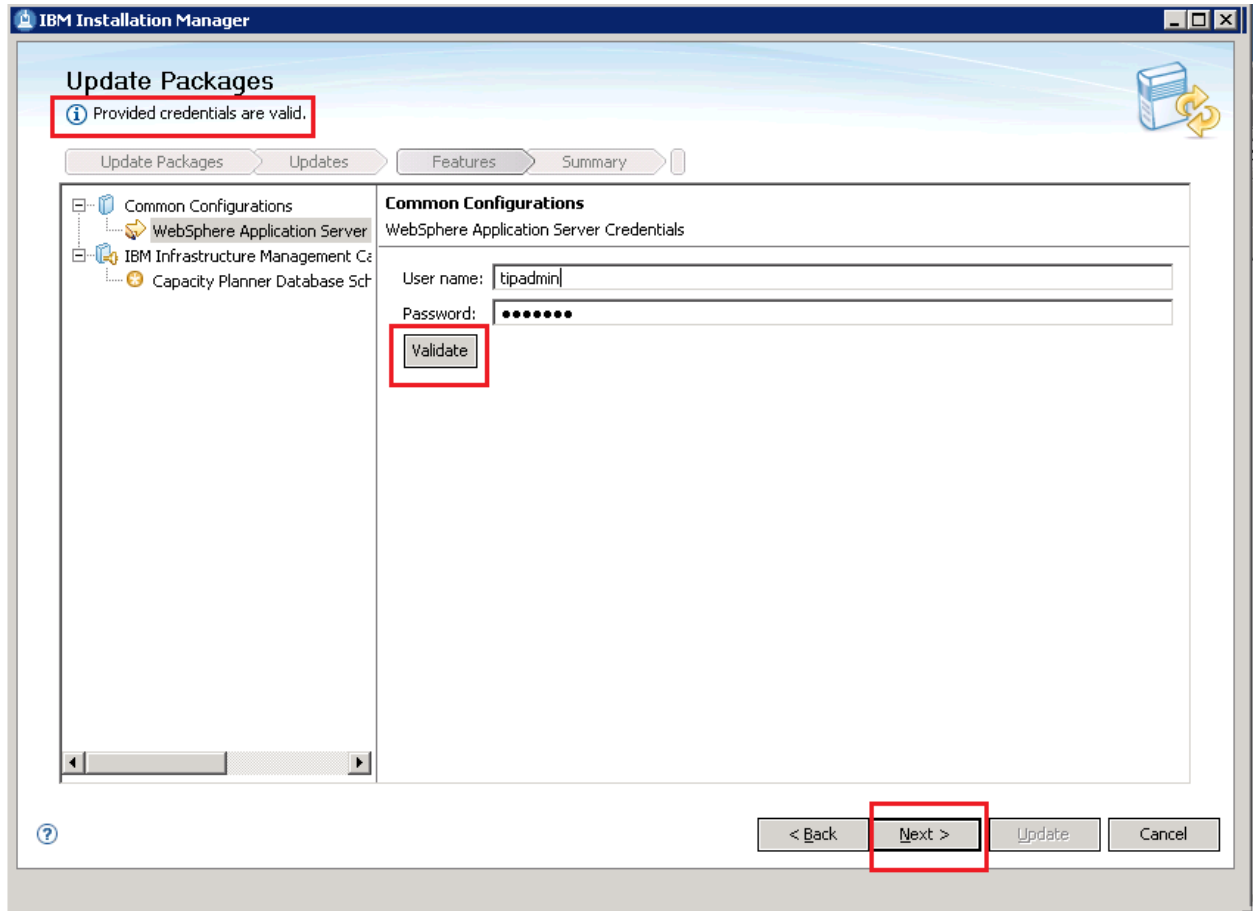


- From the **Features** list, select **IBM Infrastructure Management Capacity Planner for VMware 7.2.0.2.1**, and the corresponding **Installation** and **Configuration** check boxes and, then click **Next**.

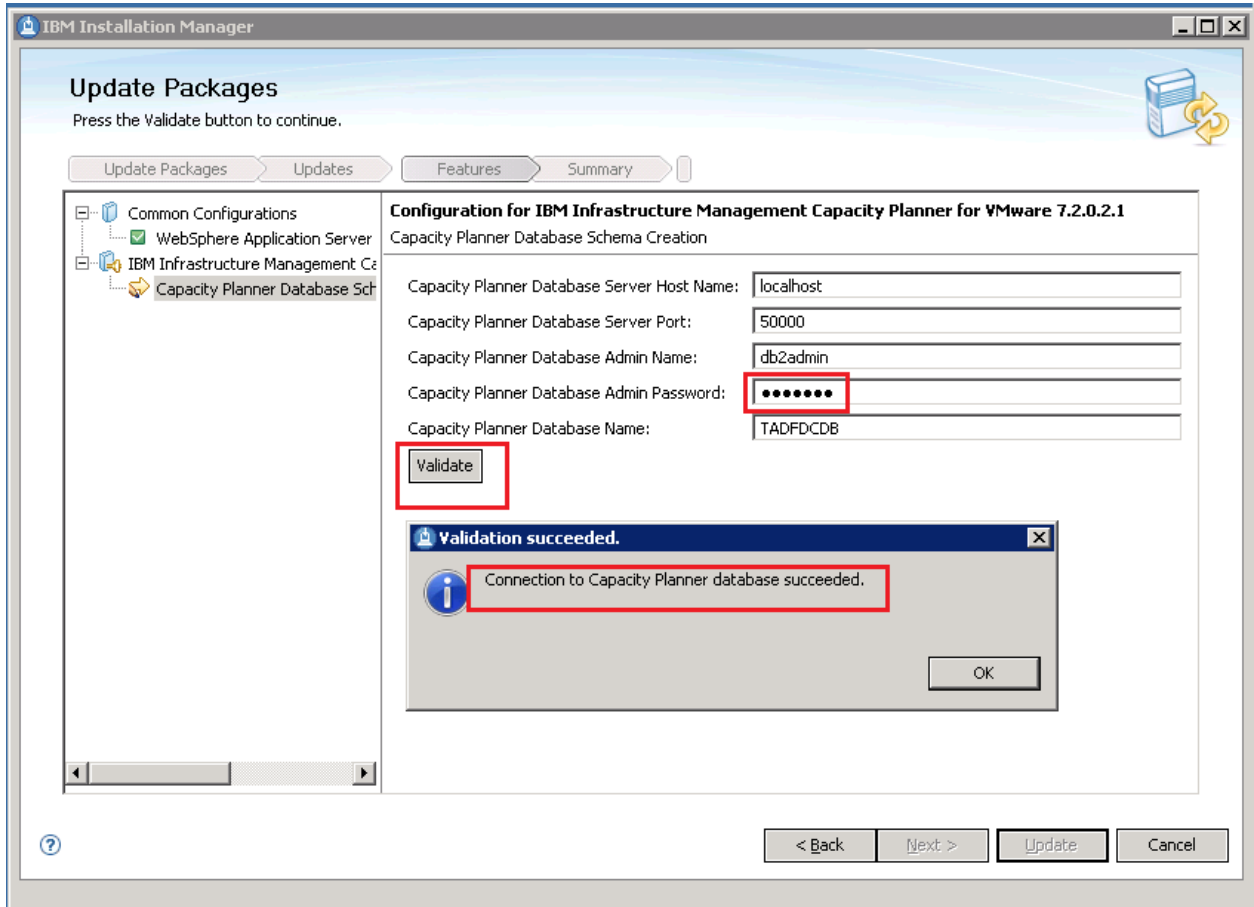


9. Enter the Websphere Application Server administrator credentials, and then click **Validate**.
Note: If the validation is successful, the `Provided credentials are valid` message is displayed, and the **Next** button is enabled.

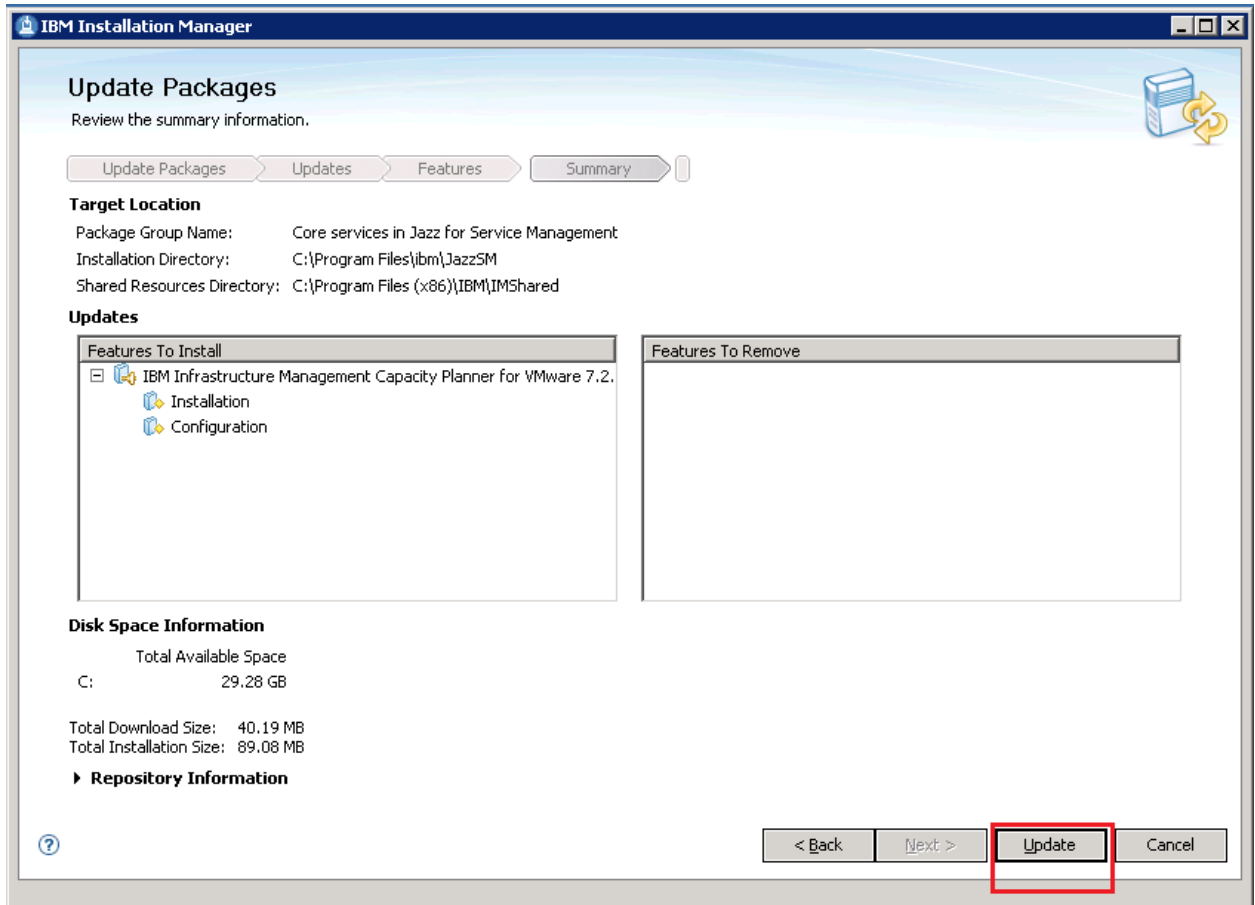
10. Click **Next**.



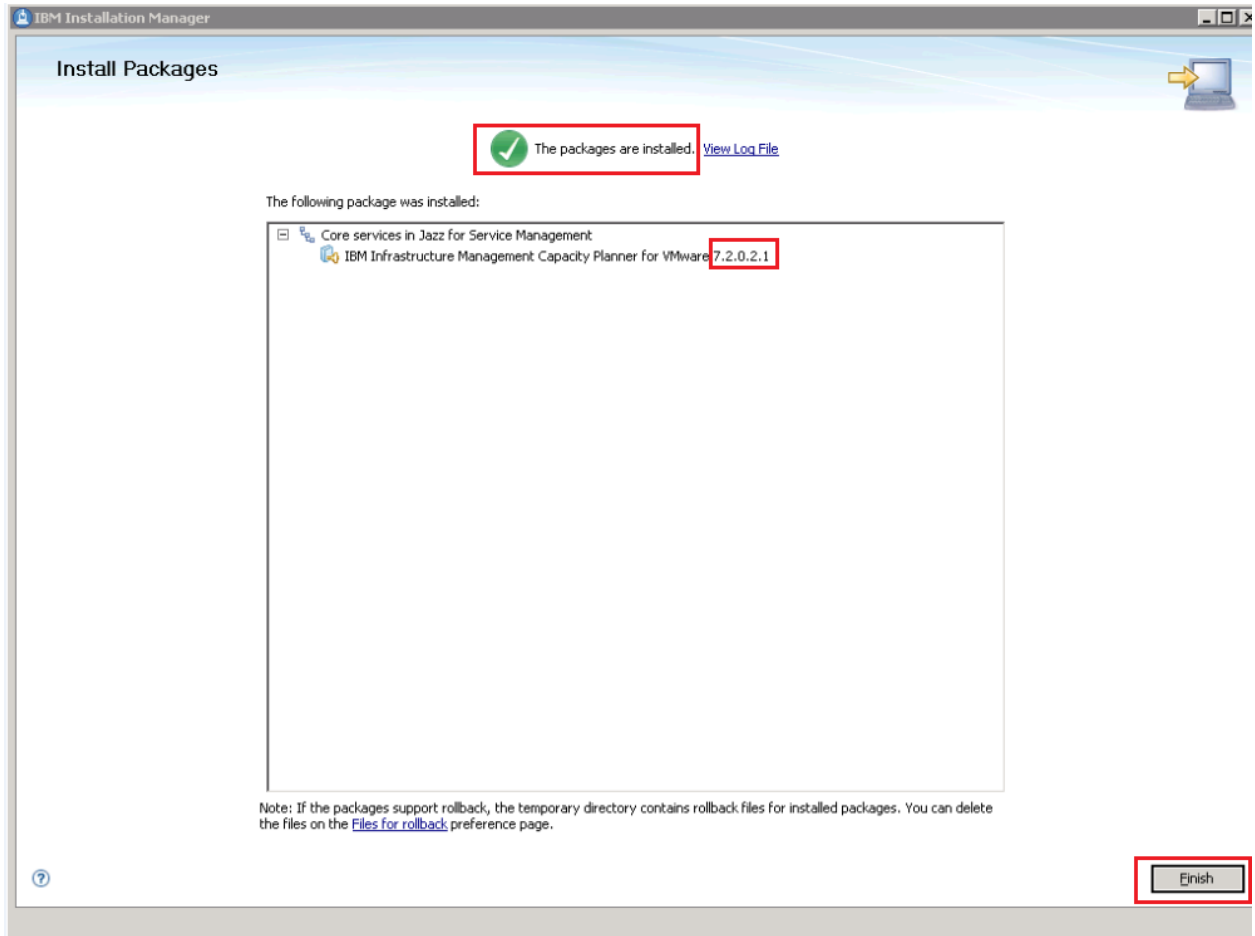
11. Enter the Capacity Planner Database Schema Creation details for the TADDFCDB database, and then click **Validate**.
Note: If your credentials are valid, then the “Validation succeeded.” pop-up window is displayed.
12. Click **OK**.



- Review the summary information in the Update Packages summary window, and then click **Update**.



After the package is successfully updated, the following message is displayed:
The packages are updated.



Console Installation for Capacity Planner for VMware 7.2 FP2 IF1

For instructions to install the Capacity Planner 7.2 FP2 IF1 by using a console, see the [VMware: Using the IBM Installation Manager Console to install the Capacity Planner and the Dashboard](#) topic in the IBM Knowledge Center.