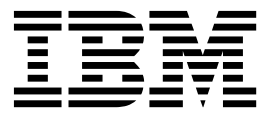


IBM Hyper-Scale Manager  
Version 5.4

*User Guide*



**Note**

Before using this information and the product it supports, read the information in Notices.

**Second Edition (March 2018)**

This edition applies to IBM Hyper-Scale Manager version 5.4 and to all subsequent releases and modifications, until otherwise indicated in new editions. Newer document editions may be issued for the same product version in order to add missing information, update information, or amend typographical errors.

© Copyright IBM Corporation 2013, 2018.

US Government Users Restricted Rights – Use, duplication or disclosure restricted by GSA ADP Schedule Contract with IBM Corp.

---

# Contents

<b>Figures</b> . . . . .	<b>v</b>
<b>About this guide</b> . . . . .	<b>vii</b>
Who should use this guide . . . . .	vii
Conventions used in this guide . . . . .	vii
Related information and publications. . . . .	vii
Getting information, help, and service . . . . .	viii
IBM Publications Center . . . . .	viii
Sending your comments . . . . .	viii
<b>Chapter 1. Introduction</b> . . . . .	<b>1</b>
<b>Chapter 2. Installing and configuring IBM Hyper-Scale Manager</b> . . . . .	<b>3</b>
Installing IBM Hyper-Scale Manager . . . . .	3
Setting up IBM Hyper-Scale Manager . . . . .	5
Adding a system after initial setup . . . . .	6
Configuring an access code . . . . .	9
Replacing the IBM Hyper-Scale Manager certificate . . . . .	10
Trusting the IBM Hyper-Scale Manager certificate . . . . .	12
Upgrading IBM Hyper-Scale Manager version 5.x . . . . .	14
Migrating IBM Hyper-Scale Manager inventory from XIV Management Tools 4.x . . . . .	15
Uninstalling IBM Hyper-Scale Manager version 5.x . . . . .	15
<b>Chapter 3. Backing up and restoring IBM Hyper-Scale Manager</b> . . . . .	<b>17</b>
Backing up IBM Hyper-Scale Manager . . . . .	17
Restoring IBM Hyper-Scale Manager . . . . .	18
<b>Chapter 4. Viewing the dashboard and system health score.</b> . . . . .	<b>21</b>
<b>Chapter 5. Understanding and monitoring capacity</b> . . . . .	<b>25</b>
Monitoring your capacity. . . . .	28
<b>Chapter 6. Planning your capacity</b> . . . . .	<b>31</b>
Generating a capacity planning report . . . . .	32
Capacity planning report structure . . . . .	32
Monitoring capacity statistics . . . . .	34
Moving capacity data between Management Server instances. . . . .	35
Exporting the raw capacity data . . . . .	35
Importing the raw capacity data . . . . .	36
Resetting the raw capacity data. . . . .	37
<b>Chapter 7. Troubleshooting latency issues</b> . . . . .	<b>39</b>
<b>Chapter 8. Managing connectivity</b> . . . . .	<b>41</b>
Defining new connectivity . . . . .	41
Defining connectivity on unmonitored systems . . . . .	45
<b>Notices</b> . . . . .	<b>47</b>
Trademarks . . . . .	48
<b>Index</b> . . . . .	<b>49</b>



---

## Figures

1.	Adding a system to the inventory	7
2.	Adding a destination email	8
3.	Advanced login screen	10
4.	Viewing system certificate, licensing and authentication	13
5.	Health widget on the Dashboard	21
6.	Configurable tips	23
7.	Projected vs. Allocated vs. Physical	26
8.	Projected System Capacity tool	27
9.	Dashboard	28
10.	Select tier	29
11.	Capacity view	30
12.	System allocation over time	33
13.	System by usage growth rate	33
14.	System usage - detailed graphs	34
15.	Illustration of the latency breakdown	39
16.	Latency view from Hyper-Scale Manager	40
17.	Creating new connectivity	42
18.	Connectivity patch panel	43
19.	Connectivity details	44



---

## About this guide

This user guide describes how to install, configure, and use IBM® Hyper-Scale Manager for managing multiple supported storage systems.

---

## Who should use this guide

This user guide is intended for storage administrators who intend to manage one or more supported IBM storage systems through the IBM Hyper-Scale Manager server and graphical user interface.

Basic familiarity with the following is required:

- Linux operating system
- Network, server, and storage terms
- IBM storage system to be managed with IBM Hyper-Scale Manager

---

## Conventions used in this guide

These notices are used in this guide to highlight key information.

---

**Note:** These notices provide important tips, guidance, or advice.

---

---

**Important:** These notices provide information or advice that might help you avoid inconvenient or difficult situations.

---

---

**Attention:** These notices indicate possible damage to programs, devices, or data. An attention notice appears before the instruction or situation in which damage can occur.

---

---

## Related information and publications

Additional information and publications related to IBM Hyper-Scale Manager can be found on the following information sources.

- IBM Hyper-Scale Manager on IBM Knowledge Center ([ibm.com/support/knowledgecenter/SSUMNQ](http://ibm.com/support/knowledgecenter/SSUMNQ))
- IBM Flash Storage and Solutions marketing website ([ibm.com/systems/storage/flash](http://ibm.com/systems/storage/flash))
- IBM FlashSystem® A9000 on IBM Knowledge Center ([ibm.com/support/knowledgecenter/STJKMM](http://ibm.com/support/knowledgecenter/STJKMM))
- IBM FlashSystem A9000R on IBM Knowledge Center ([ibm.com/support/knowledgecenter/STJKN5](http://ibm.com/support/knowledgecenter/STJKN5))
- IBM XIV® Storage System marketing website ([ibm.com/systems/storage/disk/xiv](http://ibm.com/systems/storage/disk/xiv))
- IBM XIV Storage System on IBM Knowledge Center ([ibm.com/support/knowledgecenter/STJTAG](http://ibm.com/support/knowledgecenter/STJTAG))
- IBM Spectrum Accelerate™ marketing website ([ibm.com/systems/storage/spectrum/accelerate](http://ibm.com/systems/storage/spectrum/accelerate))

- IBM Spectrum Accelerate on IBM Knowledge Center ([ibm.com/support/knowledgecenter/STZSWD](http://ibm.com/support/knowledgecenter/STZSWD))
- IBM Knowledge Center ([ibm.com/support/knowledgecenter](http://ibm.com/support/knowledgecenter))
- IBM Storage Redbooks® website ([redbooks.ibm.com/portals/storage](http://redbooks.ibm.com/portals/storage))

## IBM Hyper-Scale Manager documentation set

IBM Hyper-Scale Manager 5.x currently has the following documentation set.

IBM Hyper-Scale Manager publications	Description
<i>Release Notes</i>	Describes what's new, requirements, compatibility, change log, and known issues information in the latest version.
<i>User Guide</i>	Describes how to install, configure, and operate IBM Hyper-Scale Manager.
<i>Quick-Start Guide</i>	Walks you through installing the IBM Hyper-Scale Manager software and initial configuration of the GUI.
<i>REST API Specifications</i>	Provides specifications of the IBM Hyper-Scale Manager Representational State Transfer (REST) application programming interface (API).

---

## Getting information, help, and service

If you need help, service, technical assistance, or want more information about IBM products, you can find various sources to assist you. You can view the following websites to get information about IBM products and services and to find the latest technical information and support.

- IBM website ([ibm.com](http://ibm.com)®)
- IBM Support Portal website ([www.ibm.com/storage/support](http://www.ibm.com/storage/support))
- IBM Directory of Worldwide Contacts website ([www.ibm.com/planetwide](http://www.ibm.com/planetwide))

---

## IBM Publications Center

The IBM Publications Center is a worldwide central repository for IBM product publications and marketing material.

The IBM Publications Center website ([www.ibm.com/shop/publications/order/](http://www.ibm.com/shop/publications/order/)) offers customized search functions to help you find the publications that you need. You can view or download publications at no charge.

---

## Sending your comments

Your feedback is important in helping to provide the most accurate and highest quality information.

### Procedure

To submit any comments about this guide:

- Go to IBM Knowledge Center ([ibm.com/support/knowledgecenter](http://ibm.com/support/knowledgecenter)), drill down to the relevant product page, and then click the **Feedback** link that is located at the bottom of the page.



By adding a comment, you accept our [IBM Knowledge Center Terms of Use](#). Your comments entered on this IBM Knowledge Center site do not represent the views or opinions of IBM. IBM, in its sole discretion, reserves the right to remove any comments from this site. IBM is not responsible for, and does not validate or confirm, the correctness or accuracy of any comments you post. IBM does not endorse any of your comments. All IBM comments are provided "AS IS" and are not warranted by IBM in any way.

Comments (0) [Add Comment](#)

No Comments

Contact Privacy Terms of use Accessibility Feedback

Feedback

The feedback form is displayed and you can use it to enter and submit your comments privately.

- You can post a public comment on the Knowledge Center page that you are viewing, by clicking **Add Comment**. For this option, you must first log in to IBM Knowledge Center with your IBM ID.
- You can send your comments by email to [starpubs@us.ibm.com](mailto:starpubs@us.ibm.com). Be sure to include the following information:
  - Exact publication title and product version
  - Publication form number (for example: SC01-0001-01)
  - Page, table, or illustration numbers that you are commenting on
  - A detailed description of any information that should be changed

**Note:** When you send information to IBM, you grant IBM a nonexclusive right to use or distribute the information in any way it believes appropriate without incurring any obligation to you.



---

## Chapter 1. Introduction

IBM Hyper-Scale Manager provides a single and centralized management platform for multiple and different members of the IBM Spectrum Accelerate Family, including **IBM FlashSystem A9000** and **A9000R**, **IBM XIV Gen3** and **IBM Spectrum Accelerate** software defined storage (SDS) solutions.

IBM Hyper-Scale Manager reduces operational complexity and enhances capacity planning through integrated management for large storage system deployments. Storage administrators can log in to the Management Server and employ the advanced web-based IBM Hyper-Scale Manager to configure, manage, and monitor multiple storage systems.

Running more than one Hyper-Scale Manager allows you to ensure cross-system availability. There are two ways to achieve availability for Hyper-Scale Manager:

- Manually, by deploying 2 instances (primary and standby) of Hyper-Scale Manager.

In case the primary Hyper-Scale Manager host fails, the primary Hyper-Scale Manager setup and configuration can be restored on the standby Hyper-Scale Manager. (See Chapter 3, “Backing up and restoring IBM Hyper-Scale Manager,” on page 17 for more information.)

The browser can then be pointed to the standby Hyper-Scale Manager which is now active.

- Using Virtualization Technologies

Virtualization technologies (such as VMware tools) can be used to achieve high availability.

From version 5.0.x, IBM Hyper-Scale Manager includes a new component, Cloud Integration, which is based on IBM Spectrum™ Connect (previously known as IBM Spectrum Control™ Base Edition). IBM Spectrum Connect is a centralized server system that consolidates a range of IBM storage provisioning, automation, and monitoring solutions through a unified server platform. It provides a single server backend location and enables centralized management of IBM storage resources for different virtualization, cloud and container platforms. Implementing sophisticated storage abstraction techniques, IBM Spectrum Connect helps storage and other infrastructure administrators easily provision and integrate IBM storage with VMware solutions, Kubernetes persistent volumes, and Microsoft PowerShell automation methods.

The Cloud Integration function can be applied only to storage systems that are managed using IBM Hyper-Scale Manager 5.0.x or later. The Cloud Integration component is accessible from the Cloud Integration hyperlink on the IBM Hyper-Scale Manager UI login page. For more information about IBM Spectrum Connect, see IBM Spectrum Connect on the Knowledge Center.

Programmable automation and control of your storage systems can be implemented through the IBM Hyper-Scale Manager Representational State Transfer (REST) application programming interfaces (APIs).

IBM Hyper-Scale Manager provides a break-through user experience with powerful health monitoring that integrates events and alerts across the managed systems.

The IBM Hyper-Scale Manager UI offers context-based interaction on a single page with advanced filtering and navigation capabilities, as well as advance statistics monitoring.

You don't need to be an expert to work with IBM Hyper-Scale Manager. Just log in, run the intuitive "first-time" configuration, and get started working.

---

## Chapter 2. Installing and configuring IBM Hyper-Scale Manager

Installation and configuration of IBM Hyper-Scale Manager using the web-based user interface (UI) is fast and easy. If you are a Storage Administrator, these instructions are intended for you.

Once you have installed IBM Hyper-Scale Manager, run the first-time login and setup wizard to configure your environment.

---

### Installing IBM Hyper-Scale Manager

Before you begin working with IBM Hyper-Scale Manager, install the Management Server software.

#### About this task

Follow the steps to install Hyper-Scale Manager.

#### Procedure

1. Start by downloading the installation file from Fix Central. The name of the installation file should be similar to: IBM-Hyper-Scale-Manager\_<version>.bin.
2. FTP the downloaded installation package file to your Hyper-Scale Manager server by using the root username.
3. Log in to your Hyper-Scale Manager server and change the directory to the directory that contains the installation package file.
4. Make sure that run permissions are set. Run the following command:

```
$ chmod +x IBM-Hyper-Scale-Manager_<version>.bin
```

5. Run:

```
./IBM-Hyper-Scale-Manager_<version>.bin
```

6. A message similar to the following is displayed.

```
You are about to install IBM Hyper-Scale Manager in the [/home/msms] directory.
Permissions to this directory are designated only to the 'msms' user created during
installation.
Keep in mind that both the installation and '/opt' directories require directory
traversal permissions (x-permission) for the 'msms' user.
Press Enter to accept the installation location, or type a different path to change the
installation directory. >
```

Accept the installation location, or type a different path to change the location and press Enter.

If you decide to type a different path to change the installation location, and there are no traversal permissions (x-permission) to the directory, a message similar to the following is displayed.

```
Directory [installation location] permissions currently do not allow traversal
for 'msms' user. Do you want to add traversal permissions (x-permission) to
allow access? [Y/N] >
```

Type `y` to allow access. Traversal permissions (`x`-permission) is added to the selected directory. If you decide not to add traversal permissions (`x`-permission), you must type a different path in order to continue with the installation.

---

**Note:** If you don't have traversal permissions (`x`-permission) to the `/opt/` directory for the Cloud Integration feature, a message similar to the one above is also displayed.

---

7. Enter the communication ports at the prompts and press Enter.

```
Please enter HTTP port number to use with IBM Hyper-Scale Manager or 0 to disable
HTTP port [8080] >
Please enter HTTPS port number to use with IBM Hyper-Scale Manager [8443] >
Please enter HTTPS port number to use with cloud integration feature [8440] >
```

---

**Note:** Since Cloud Integration is deployed as part of the IBM Hyper-Scale Manager package, a supported storage system can be added or removed only from the IBM Hyper-Scale Manager UI. When a system is added, it is displayed in the Cloud Integration interface from which you can run your usual Spectrum Connect operations. See [Managing storage systems](#).

---

---

**Note:** When you are choosing the Web UI ports, make sure not to use unsafe ports for Google Chrome or Mozilla Firefox. A complete list can be found at: [Which ports are considered unsafe on Chrome or Ports blocked by default in Mozilla](#).

---

8. Enter `y` to begin the installation.

```
IBM-Hyper-Scale Manager version <version> will be installed under /home/msms/hyperscale.
Are you sure you want to install now? [y/n] >
```

9. The license agreement is displayed. Press `1` and Enter to accept the license and continue with the IBM Hyper-Scale Manager installation.

---

**Note:** In our constant efforts to improve your experience with Storage Management, we added an analytics module to help us understand how you and others are using the application. During the installation, you are asked to approve activating this analytics module. No private information is shared with IBM; including names, sizes, or passwords. If you agree, only information about the way you interact with the application is sent to IBM and treated as confidential.

---

## What to do next

When the installation is complete, make sure that all the required ports are opened on the OS firewall:

- Outbound:
  - TCP 25 (SMTP)
  - TCP 7778 (Backend communication with storage systems)
- Inbound (default):
  - Web UI port - 8080 (for HTTP support) or 8443 (for HTTPS support)
  - Cloud integration port - 8440

---

**Note:** For IPv6 connectivity, make sure the IPv6 firewall (the `ip6tables` in RHEL 6) is configured to allow traffic to these ports.

---

Reboot your system and make sure that the ports are correctly configured on your firewall.

Go to Setting up IBM Hyper-Scale Manager.

---

## Setting up IBM Hyper-Scale Manager

Run the "first-time" configuration to set up the first system in your storage environment.

### About this task

Connect and log in to the IBM Hyper-Scale Manager UI on the Web with one of the following URLs:

- `http://<hostname>:8080` or `http://<IP address>:8080` (HTTP supported browser access)
- `https://<hostname>:8443` or `https://<IP address>:8443` (HTTPS supported browser access)

The first-time login and setup wizard is displayed in your browser.

### Procedure

1. From the **Welcome to IBM Hyper-Scale Manager** page, click **Let's Start**.

---

**Note:** You'll need the IP/DNS of one storage system (for example, IBM XIV Gen3, IBM Spectrum Accelerate, IBM FlashSystem A9000 or IBM FlashSystem A9000R system) and the Storage Administrator credentials to authenticate to that system.

---

2. Add a storage system to your inventory. Enter the IP/DNS address of the system and click **Continue**.
3. Log in to the system with your Storage Administrator credentials and click **Continue**. Use the default username **admin** and the default password **adminadmin**, unless the defaults have been previously changed. In this case, log in with the new username and password.

---

**Note:** If you are logging in to a new or upgraded system, a Certificate Error is displayed. First, trust the certificate and then click **Continue**.

---

4. At this point, you need to configure the Management Server. IBM Hyper-Scale Manager uses the Management Server as a mediator to simultaneously monitor and configure multiple systems in your inventory. Click **Continue**.
5. Create a monitoring account for the Management Server. If multiple Hyper-Scale Manager servers are installed, and possibly manage the same storage systems, make sure to use the same user credentials for the monitoring account on **all** of your Management servers.
  - If a monitoring account hasn't been generated previously, then a username and password are automatically generated for you.
  - If a monitoring account has been generated previously, you can set a new monitoring account name and password. Keep in mind that predefined usernames, such as *admin*, can't be used for monitoring accounts.
  - If you are using an LDAP domain, enter the name and password that exists in the LDAP server. If your LDAP server requires a domain, use UPN notation (for example, *name@domain.ibm.com*).

---

**Note:** If you are logging in to a new or upgraded system, a *Software License Agreement* is displayed. Click **Accept** and **Continue**.

---

6. **Congratulations! You're Done.** Now that you've completed the installation and setup, click **Show me the Dashboard** and get started managing your storage.

---

## Adding a system after initial setup

You can add additional systems to your inventory after initial setup.

### About this task

Complete the following steps to add a system to your inventory.

### Procedure

1. Log in to Hyper-Scale Manager to further configure the Management Server.

---

**Important:** Regardless of what user you use to log in to Hyper-Scale Manager, the same username and password must be used on **all** of the systems in your inventory. If you change the password, Hyper-Scale Manager may not be updated immediately. To update immediately, select **Actions > Inventory > Re-authenticate all Users**.

---

2. Choose **Management Server > Add systems to Monitor** from the side bar. A new tab is opened in the table view and the **Add System** form is displayed:



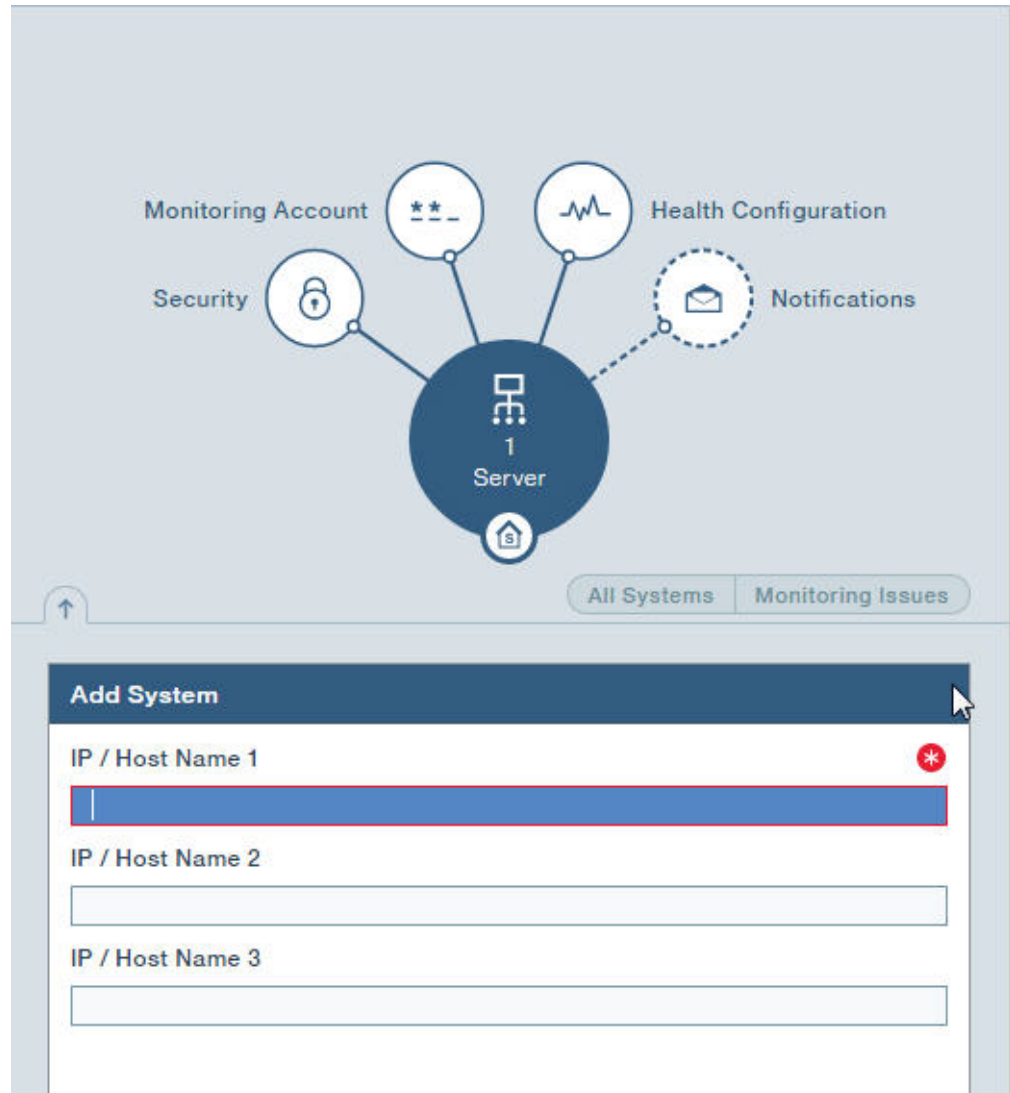


Figure 1. Adding a system to the inventory

3. Enter an IP address or Host Name for the system you want to add. Click **Apply**.
4. If a Monitoring Account doesn't exist on the newly added system, it will appear with an authentication error. From the **Actions** menu, select **Inventory > Fix all Authentication Errors**.

---

**Note:** You must be logged in to Hyper-Scale Manager as a predefined *admin* user to perform this operation.

---

5. (Optional) If you want to make changes to the monitoring account information used by the Management Server to monitor the systems in your inventory, click **Monitoring Account** on the Hub. To apply the changes to **all** of the monitored systems in your inventory, select **Actions > Monitoring Account > Set Account on Systems**.

---

**Note:** You must be logged in to Hyper-Scale Manager as a predefined *admin* user to perform this operation.

---

- (Optional) Click **Notifications** on the Hub to allow and add users to receive notifications about Hyper-Scale Manager issues to the destination email.

The screenshot shows the 'Notifications' configuration page in the Hyper-Scale Manager interface. At the top, there is a navigation bar with 'Actions' and 'Notifications'. Below this is a central hub diagram with a 'Server' icon and '1 Server' text. The hub is connected to several icons: a lock, a list, a pulse line, a mail icon, and a subscriber icon labeled 'Subscribers (1)'. Below the hub, there is a toggle switch for 'Enabled' (selected) and 'Disabled'. The configuration fields include: 'SMTP Server Address' (relay1.xiv.ibm.com), 'Port' (250), 'Sender Email Address' (ibm1@ibm.com), 'Destination Email Address' (empty), 'Email Address' (ibm\_info@ibm.com), and another 'Email Address' (aaa@aaa.com). At the bottom right, there are 'Cancel' and 'Apply' buttons.

Figure 2. Adding a destination email

7. Click **Apply** to save the information entered. Click **Cancel** to exit without saving the information entered.

## Configuring an access code

The access code restricts administrative configuration actions to the Management Server when you log in to Hyper-Scale Manager.

### About this task

Access to the Management Server is unrestricted by default, but you can add an access restriction at any point.

### Procedure

1. If you want to add an **Access Code**, to the Management Server, click **Security** on the Hub.
2. Select **Restrict access**.
3. Type your access code and confirm it.
4. Click **Apply**. When access to the server is restricted, the Hyper-Scale Manager login will appear in advanced mode.

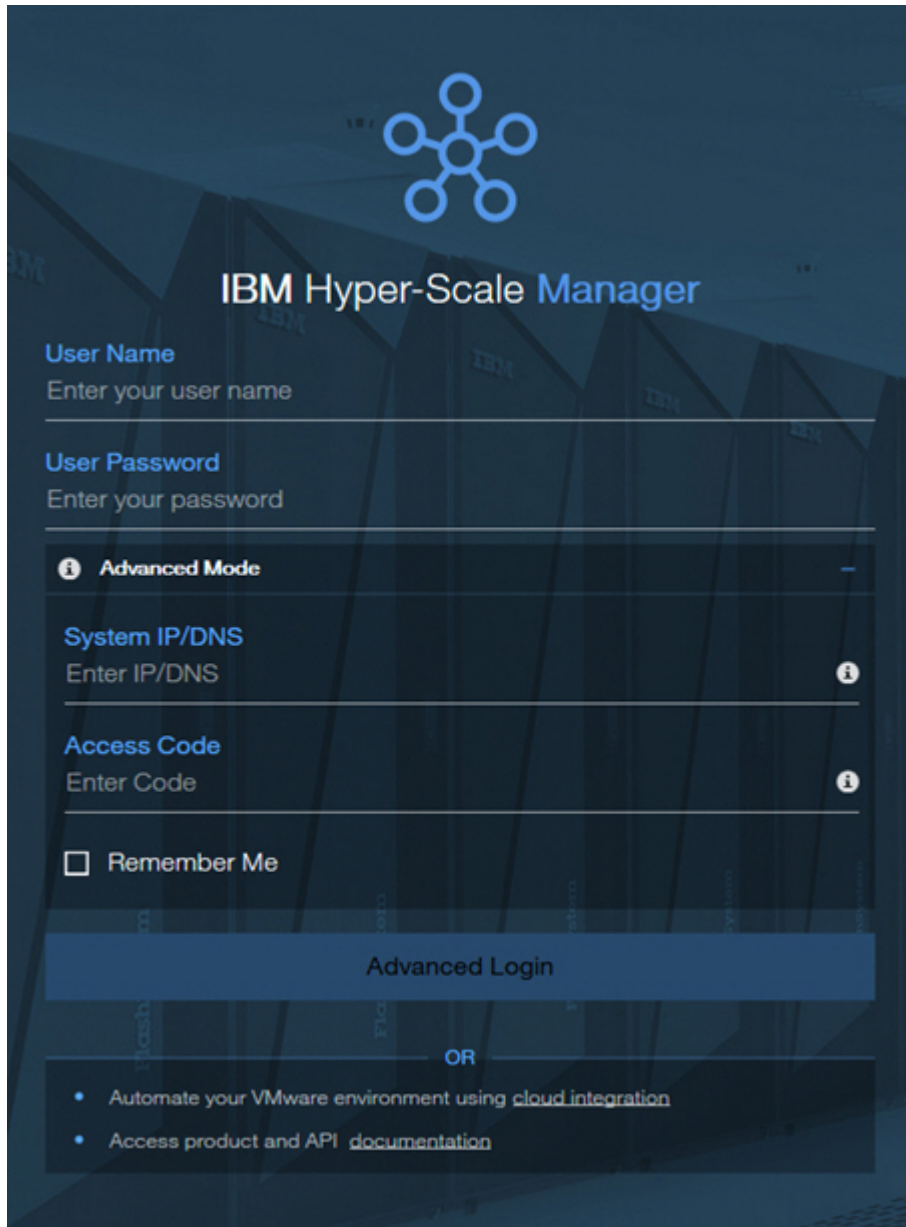


Figure 3. Advanced login screen

5. To log in in **Advanced Mode**, enter the **System IP/DNS** address of one of your monitored systems, type your **Access Code**, and click **Advanced Login**.

---

## Replacing the IBM Hyper-Scale Manager certificate

This task guides you through replacing the default IBM Hyper-Scale Manager certificate with your organization's certificate.

### Before you begin

The IBM Hyper-Scale Manager is shipped with a default certificate. This task guides you through replacing the default certificate with your organization's certificate.

- Prepare a certificate file in PKCS#12 format.

- FTP the file to the hyperscale/files/upload folder.

## Procedure

1. Log in to your Management Server server and change the directory to the directory where you installed IBM Hyper-Scale Manager.
2. Type `./management_menu.sh`. The IBM Hyper-Scale Manager text-based user interface (TUI) User Menu is displayed:

```

-----
----- IBM Hyper-Scale Manager v5.x -----
-----
-----04/25/2016 05:06-----
User Menu
-----
IBM Hyper-Scale Manager is running

1) IBM Hyper-Scale Manager Inventory Options
2) Show Audit Log
3) Gather IBM Hyper-Scale Manager Logs
4) Backup/Restore Options
5) Change Manager Access Code
6) Replace IBM Hyper-Scale Manager Certificate
7) Change Network Settings
8) SMTP Configuration
9) Start/Stop Hyper-Scale Manager Service
10) Exit
Your Selection>

```

3. Choose Replace IBM Hyper-Scale Manager Certificate.

```

Your Selection>6

This operation requires IBM Hyper-Scale Manager restart. Are you sure you want to
continue? [y/N] y
This script installs a new certificate.
You need to prepare a certificate file in PKCS#12 format.
Place the file to '/home/msms/hyperscale/files/upload' folder.

Press any key to see the certificate files found under the
'/home/msms/hyperscale/files/upload' folder

```

4. The available certificates that are in the *upload* folder are displayed on screen, similar to the following:

```

Certificate files found under the '/home/msms/hyperscale/files/upload' folder:
-----
Test-ErezCert_03_4096-cert.p12

Please enter a certificate file name [] >

```

5. Enter a certificate file name and the key password.

```

Please enter a certificate file name [] >Test-ErezCert_03_4096-cert.p12
Enter the certificate key password >
The new certificate is successfully installed.
The Hyper-Scale Manager service needs to be restarted so the changes will take effect.
Restart now? [Y/N] >

```

6. Approve restarting the IBM Hyper-Scale Manager service.

## Results

The server certificate is now replaced. You are returned to the User Menu.

---

## Trusting the IBM Hyper-Scale Manager certificate

When you add a storage system to your inventory, you need to trust the IBM storage system certificate.

### Before you begin

Managing certificates in this version of IBM Hyper-Scale Manager can be done using the CLI. For more information, refer to the *IBM FlashSystem A9000 Command-Line Interface (CLI) Reference Guide*.

### Procedure

1. To view the status of the system certificate, authentication and license, select **Management Server > Manager Configuration**. The System inventory is displayed.
2. Click the **Actions** button in the upper right corner of one of the systems in the list to see the status of the certificate, authentication and license.



Figure 4. Viewing system certificate, licensing and authentication

3. If the system certificate or CA of the issuer is not trusted, then select **Trust Certificate**.
4. Click **Accept** to trust the certificate.

---

## Upgrading IBM Hyper-Scale Manager version 5.x

Upgrade IBM Hyper-Scale Manager version 5.x to the most recent version available.

### About this task

Follow the steps to upgrade IBM Hyper-Scale Manager and the Management Server from version 5.x to the current version.

### Procedure

1. Start by downloading the installation file from Fix Central. The name of the installation file should be similar to: IBM-Hyper-Scale-Manager\_<version>.bin.
2. FTP the downloaded installation package file into your Management Server server by using the root username.
3. Log in to your Management Server server and change the directory to the directory that contains the installation package file.
4. Make sure that run permissions are set. Run the following command:

```
$ chmod +x IBM-Hyper-Scale-Manager_<version>.bin
```

5. Run:

```
./IBM-Hyper-Scale-Manager_<version>.bin
```

A menu similar to the following is displayed:

```
-----
-----  IBM Hyper-Scale Manager <version>  -----
-----
IBM Hyper-Scale Manager version 5.0.2 is already installed on this server.
Please select one of the following:
1) Upgrade
2) Uninstall
3) Exit
Please enter your choice > 1

IBM Hyper-Scale Manager will be upgraded from version 5.0.2 to <version>.
Are you sure you want to upgrade now? [y/n] >
```

6. From the menu, enter the number that corresponds to Upgrade and Enter.
7. Type y to begin the upgrade.
8. A prompt to view the license agreement is displayed.

```
IBM Hyper-Scale Manager license agreement will be shown.
Press 'Enter' to view the license agreement.
During the review of the license, you can press '1' and 'Enter' to accept and
continue with the installation, or '2' and 'Enter' to decline and abort the
installation.
```

9. Press Enter to view the license agreement. Accept the license and continue with the IBM Hyper-Scale Manager installation.



---

**Note:** In our constant efforts to improve your experience with Storage Management, we added an analytics module to help us understand how you and others are using the application. During the installation, you are asked to approve activating this analytics module. No private information is shared with IBM; including names, sizes, or passwords. If you agree, only information about the way you interact with the application is sent to IBM and treated as confidential.

---

If you agree to allow access to your IBM Hyper-Scale Manager usage data, type y. If you don't want to allow access to your IBM Hyper-Scale Manager usage data, type n.

**Note:** Access to your IBM Hyper-Scale Manager usage data does not include personal data.

10. The upgrade procedure begins. Continue working when the upgrade procedure completes successfully.

---

## Migrating IBM Hyper-Scale Manager inventory from XIV Management Tools 4.x

If you have previously worked with IBM XIV Management Tools 4.x and have upgraded to IBM Hyper-Scale Manager 5.x, you can manually migrate your existing systems inventory to the newly installed IBM Hyper-Scale Manager.

### About this task

Follow the steps to manually migrate your existing systems inventory from XIV Management Tools 4.x to the newly installed IBM Hyper-Scale Manager.

### Procedure

1. Start by running the "first-time" login configuration to IBM Hyper-Scale Manager. See "Setting up IBM Hyper-Scale Manager" on page 5.
2. Log in to the IBM Hyper-Scale Manager 5.x server via ssh and stop the HSM service with the `service xivms stop` command.
3. From the IBM Hyper-Scale Manager 4.x system, find the `systems.xml` file in the `MSMS_HOME/server/data` directory.
4. Copy the `systems.xml` file to the target IBM Hyper-Scale Manager 5.x server and paste it in the same `MSMS_HOME/server/data` directory (as on the 4.x server). Overwrite the existing `systems.xml` file.
5. Start the HSM service on the IBM Hyper-Scale Manager 5.x server with the `service xivms start` command.
6. Log in to the IBM Hyper-Scale Manager UI. The systems should be available in your IBM Hyper-Scale Manager inventory.

---

## Uninstalling IBM Hyper-Scale Manager version 5.x

Uninstall IBM Hyper-Scale Manager version 5.x.

### About this task

Follow the steps to uninstall IBM Hyper-Scale Manager and the Management Server version 5.x.

## Procedure

1. Start by downloading the installation file from Fix Central. The name of the installation file should be similar to: IBM-Hyper-Scale-Manager\_<version>.bin.
2. FTP the downloaded installation package file into your Management Server server by using the root username.
3. Log in to your Management Server server and change the directory to the directory that contains the installation package file.
4. Make sure that run permissions are set. Run the following command:

```
$ chmod +x IBM-Hyper-Scale-Manager_<version>.bin
```

5. Run:

```
./IBM-Hyper-Scale-Manager_<version>.bin
```

A menu similar to the following is displayed:

```
-----  
-----  IBM Hyper-Scale Manager <version>  -----  
-----  
IBM Hyper-Scale Manager version 5.0.2 is already installed on this server.  
Please select one of the following:  
1) Upgrade  
2) Uninstall  
3) Exit  
Please enter your choice > 2  
  
IBM Hyper-Scale Manager will be uninstalled.  
Are you sure you want to uninstall now? [y/n] >
```

6. From the menu, select the number that corresponds to Uninstall and press Enter.
7. Type y to run the uninstall. IBM Hyper-Scale Manager will be uninstalled. The installation contains VMware integration data that will be lost during the uninstall. Be sure to back up your cloud integration configuration before uninstalling IBM Hyper-Scale Manager.

---

## Chapter 3. Backing up and restoring IBM Hyper-Scale Manager

The tasks in this section describe the best practice on how to back up and restore the inventory configuration of Hyper-Scale Manager. All of the backup and restore options are accessible from the *Management* menu of the text-based user interface (TUI).

---

### Backing up IBM Hyper-Scale Manager

This section describes how to back up the inventory configuration of the IBM Hyper-Scale Manager.

#### About this task

The backup file is version-specific. It can be restored into a Hyper-Scale Manager of the same version. Whenever you upgrade Hyper-Scale Manager to a new version, create a new backup file.

The backup procedure backs up the following configurations:

- Hyper-Scale Manager inventory
- User settings - where information about users and the systems they work on is saved
- Network configuration
- System trusted certificate
- SMTP configuration

The backup process does not back up other configurations and data, such as:

- Network and NTP
- Monitoring Account
- Hyper-Scale Manager Access Code
- IBM Hyper-Scale Manager certificate
- IBM Hyper-Scale Manager logs

To configure these "not-to-be-saved" configurations, refer to the relevant sections of this user guide.

#### Procedure

1. Log in to the Hyper-Scale Manager using SSH.
2. Run `$MSMS_HOME/management_menu.sh`.
3. Select 4 on the management menu. The Backup and Restore Menu is displayed on screen.

```
Backup and Restore Menu
-----
1) Backup
2) Restore
3) Schedule Daily Backup
4) Remove Scheduled Backup
5) Back to previous menu
Your Selection>
```

4. Select 1 to back up the database.

```
Your Selection>1
Backing up...
Backup completed successfully
Press any key to continue
```

The backup is stored in the `files/backup` directory under the `/hyperscale` directory in the installation path.

5. Press any key to return to the Backup and Restore Menu.
6. Export the backup to an external device.

## What to do next

You can activate an automatic scheduled daily backup by selecting the Schedule Daily Backup option from the Backup and Restore Menu and specify the desired time. You can cancel it at any time by selecting Remove Scheduled Backup.

---

## Restoring IBM Hyper-Scale Manager

This section describes how to restore the inventory configuration and preferences of IBM Hyper-Scale Manager from a backup.

### About this task

The restore procedure restores the following configurations:

- Hyper-Scale Manager inventory
- User settings - where information about users and the systems they work on is saved
- Network configuration
- System trusted certificate
- SMTP configuration

The restore process does not restore other configurations and data, such as:

- Network and NTP
- Monitoring Account
- Hyper-Scale Manager Access Code
- IBM Hyper-Scale Manager certificate
- IBM Hyper-Scale Manager logs

To configure these not-restored configurations, refer to the relevant sections of this user guide.

### Procedure

1. Copy the backup file to the `files/backup` folder in the `/hyperscale` directory in the installation path.
2. SSH using `root` to the Hyper-Scale Manager server.
3. Run `$MSMS_HOME/management_menu.sh`.
4. Select 4 on the management menu. The Backup and Restore Menu is displayed on screen.
5. Select 2 to restore the database.

Backup and Restore Menu

```
-----  
1) Backup  
2) Restore  
3) Schedule Daily Backup  
4) Remove Scheduled Backup  
5) Back to previous menu  
Your Selection>
```

- a. Select a file (similar to the files below) to restore from:

```
Your Selection>2  
Backup files to restore (the first is most recent):  
-----  
1) BACKUP_20160519_162219.tar.gz 3) BACKUP_20150519_162156.tar.gz  
2) BACKUP_20160519_162211.tar.gz  
  
Enter a number (from 1 to 3) to select a file or 'q' to quit >1  
  
Are you sure that you want to restore BACKUP_20150519_162219.tar.gz? [Y/N] >y
```

- b. Click Y to confirm.

- c. Confirm again:

```
Restore DB is going to override your current configuration.  
It is recommended to run a backup prior restoring.  
Do you want to run backup of the current configuration before restoring? [Y/N] >y  
Do you want to restore the existing Snapshot schedules [Y/N] >
```

---

**Note:** If you intend to restore your existing Snapshot schedules, and you have two or more active Hyper-Scale Managers, make sure that the Snapshot Schedule is configured on only one.

---

- d. Output similar to the following is displayed:

```
Backing up...  
Backup completed successfully  
Backup archive is in: /home/msms/hyperscale/files/backup/  
BACKUP_20150519_162717.tar.gz  
xivms v1.8.0.74 has stopped  
  
Restoring from BACKUP_20160519_162219.tar.gz...  
The restore is successfully completed.  
  
Note: The following configurations were not restored ( the previous configurations  
were kept ):  
- System Machine Account password  
- Manager Access Code  
- Manager Certificate  
If you wish to set them, please refer to the user guide for further explanations.  
  
xivms v1.8.0.74 is starting...
```

- e. When the restore is complete, press any key to return to the Backup and Restore menu.
6. Go to “Adding a system after initial setup” on page 6 to configure your Monitoring Account information.



## Chapter 4. Viewing the dashboard and system health score

The **Dashboard** of the IBM Hyper-Scale Manager UI collects information for analysis and provides an overview of your managed storage systems in real-time.

The **Dashboard** displays an aggregated view of your system health, your data reduction rate and savings, provisioned capacity and performance metrics.

The **Health** widget monitors all of your system core components. System Health monitoring not only detects and raises *alerts* for immediate problems, but gives you *tips* per feature group that expose potential issues which may ultimately affect your system health and performance.

All *tips* and *alerts* are clickable, making it easier to jump directly to the problematic object.

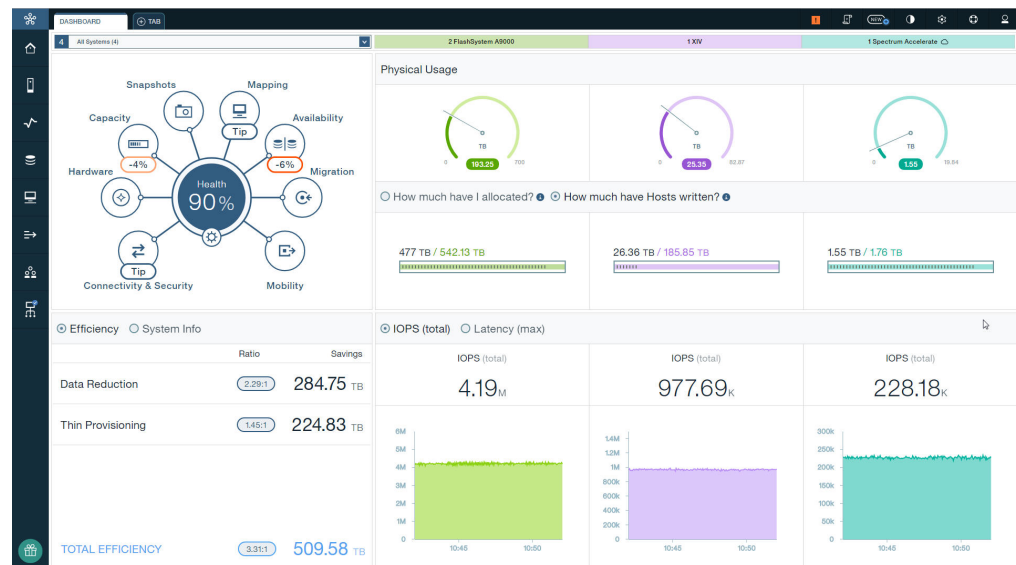


Figure 5. Health widget on the Dashboard

The total health status is dependent upon the system alerts and tips. Alerts reduce the overall health score percentage, while tips have no affect on the score.

Alerts appear for connectivity, hardware, and capacity and are broken down by severity: **Critical**, **Major**, **Minor**, or **Warning**.

Each severity has a calculation that contributes to the reduction of the overall health score. However, the total health score can't be less than 10%. Within each category, the reduction of the health score is limited to -50%.

The default health reduction values appear in the table below. Click on the Settings icon on the Health widget to define your own health reduction settings, per severity, for how much is reduced from your total dashboard health score.

Table 1. Default health scores

Severity	Health score
Critical	-25
Major	-6
Minor	-3
Warning	-1

---

**Note:** In some cases, the Health widget might display a score resulting from the failure of a top-level component. If this occurs, individual scores from alerts on internal components are not included in the health and do not affect the score.

---

Tips appear within all of the groups, except hardware, and are further divided into different categories, such as:

- Two systems are connected, but not defined as *multipath*, thereby leaving replication at risk, in case of a failure
- Host connectivity where the Host is connected to one system, but not set up for *multipathing*, thereby leaving the Host at risk in case of failure
- Volumes are not used and can be reclaimed
- The mirroring or migration status of a single Volume, or multiple Volumes, indicates process errors
- The Pool's Snapshots size is too large in ratio to the Pool size

You can also toggle whether or not you want a tip to be displayed:



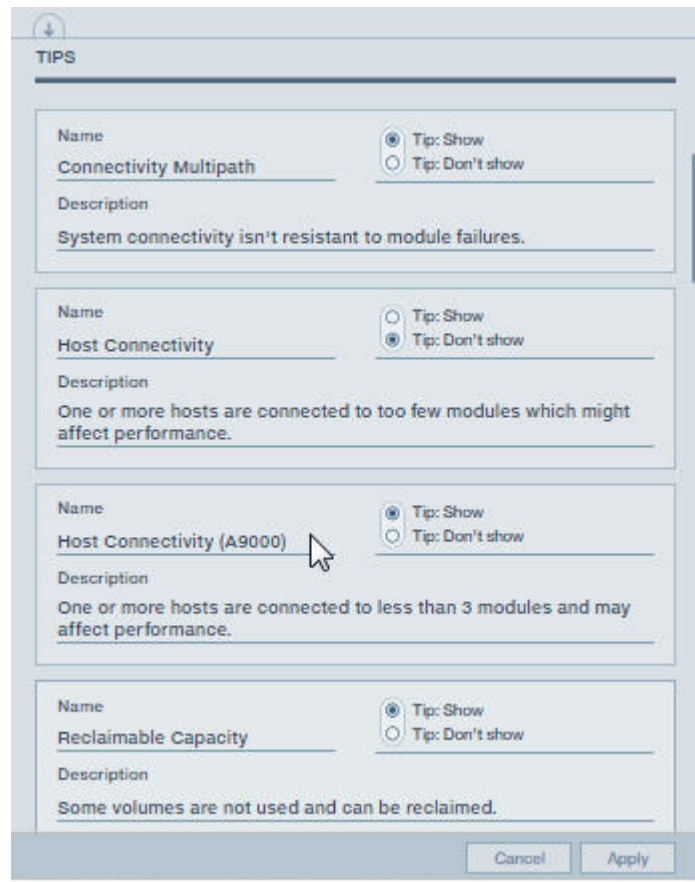


Figure 6. Configurable tips

Click on the alerts or tips to navigate to and fix the problematic objects so that you can improve your health score.



---

## Chapter 5. Understanding and monitoring capacity

The primary provisioned resource in storage systems is *capacity*. Provisioning is the process of associating resources with objects, such as: Systems, Domains, Pools (with their associated Snapshot space) and Volumes, as well as Hosts and Clusters. But, interpreting capacity in your storage environment can be surprisingly tricky. Especially when storage vendors describe their capacity in different ways. In effort to simplify the notion of capacity in your storage environment, we've combined the concepts associated with capacity across all of the system types in your inventory.

Managing and utilizing the storage system's physical and projected capacities is a key aspect of system management. The following figure illustrates capacity accounting, monitoring and planning.

On the right side of Figure 7 on page 26, the **Physical size** (physical usable capacity) represents the amount of space that is physically available in the system to store data after data reduction. The **Stored** amount illustrates how much has been used from the **Physical size** of the system after data reduction. In addition, the physical thresholds set for the System indicate the current warning, minor, major and critical values.

With data reduction, more space becomes available for data storage. In Figure 1, the **Projected system capacity**, or projected system size, is the combined calculation of the reduction ratio you define for your expected workload (in this case, x5.0), together with the actual System reduction rate of your accumulated data workload. The **Allocated Volumes** value represents the total Volume size that you have created in the system. How much has been **Written by Hosts** represents the total data that was written by Hosts to all of the Volumes before it was reduced in the system.

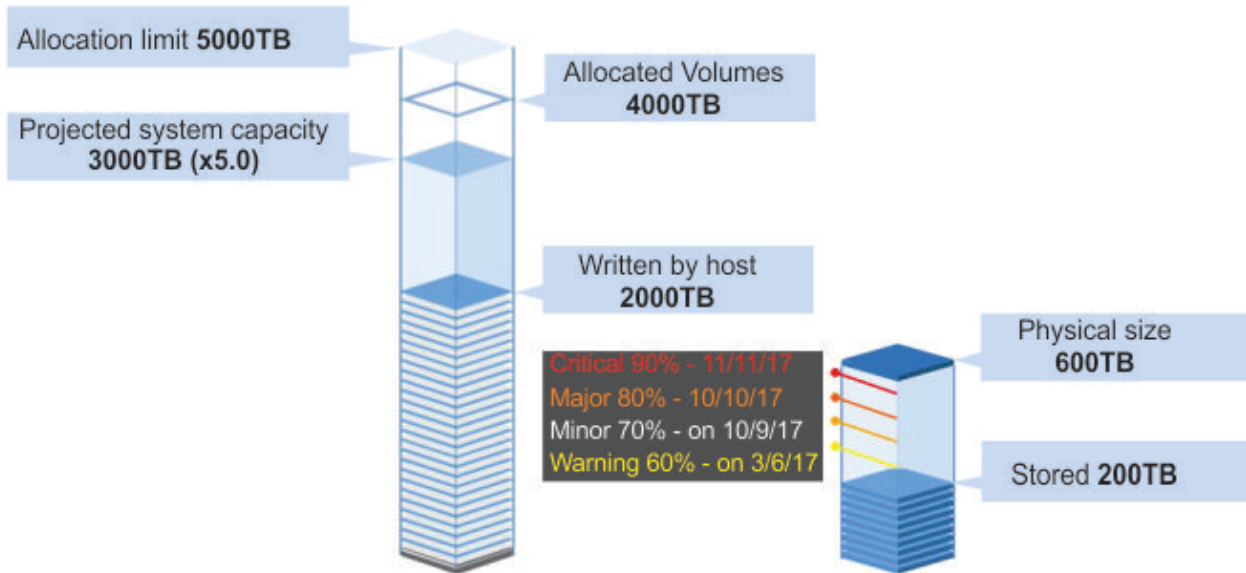


Figure 7. Projected vs. Allocated vs. Physical

Figure 1 emphasizes the reduction rate of 1:10 while the expected reduction ratio is set to 1:5. This means that the reduction rate is better than the reduction ratio that was defined.

When you consider how data reduction will affect your space requirements, consider several factors. First, think about the type of data that will be stored and how well that type of data typically can be reduced by using compression and data deduplication. Next, make basic projections by using typical compression rates for calculating potential savings. **Over allocation** can also save even more space. See the *IBM XIV Gen3 Product Overview (GC27-3912)* and the *IBM FlashSystems A9000 or A9000R Product Overview (GC27-8583 or SC27-8558, respectively)* guides for more information on thin provisioning.

Following are some of the basic concepts associated with capacity in IBM Hyper-Scale Manager:

#### Projected System Capacity

The **Projected System Capacity** is the combined calculation of the **projected reduction ratio** you define with the accumulated system data, such as: growth rate and actual data reduction rate over time. The Projected System Capacity may fluctuate according to the continuous System calculation. Defining a fixed size value for the estimated reduction ratio keeps the Projected System Size calculation steady.

**What is My System Size?**

Use this tool to project how much data can be written to your System, based on your expected workload & data reduction ratio.

1. Starting Point - My System Physical Size **1.96 TB**

2. Choose a Calculation Method

- A combination of My estimation & System actual reduction rate (may change over time) **6.73:1**
- My estimation for reduction ratio (used as a fixed ratio) **5.0 :1**
- System actual reduction rate (may change over time) **75.6:1**

3. Result - Projected System Size **13.23 TB**

Cancel Apply

Figure 8. Projected System Capacity tool

### Allocated Volumes & Snapshots

The total Volume and Snapshots size that you have created in the System.

### Allocation limit

The default limit on the System available for Volume allocation.

### Written (by Host)

Represents the total data written by hosts to the Volumes in the system before data reduction.

### Physical size

The physical size (or physical usable capacity) represents the amount of space that is physically available in the system to store data after data reduction.

### Physical usage

The actual total *physical size* used after data reduction.

### Volumes in System

How much space has been reserved by creating Volumes and Snapshots out of the System's allocation limit.

### Reclaimable capacity

The total allocation capacity of all Volumes which are not used in your environment; this is a makeup of source Volumes (or their Snapshots) that aren't mapped and target Volumes that aren't mirrored. This capacity can, thus, be reclaimed and allocated to other hosts.

You can see the provisioned capacity across all of the System types in your inventory from the Dashboard in the IBM Hyper-Scale Manager UI.

# Monitoring your capacity

## About this task

From the IBM Hyper-Scale Manager UI, you can now monitor all of your systems' capacity from the dashboard across your "A" and "XIV" storage families at one time. Open additional tabs or use the dashboard drop-down menu to focus on System (tier) types or focus in on individual systems. Capacity can also be monitored from other various views, such as the System, Domains, Pools, Volumes, and Hosts views.

## Procedure

1. From the dashboard, display **All Systems**. An overview of your managed storage systems in real-time is displayed, including any "off-premise" IBM Spectrum Accelerate systems.

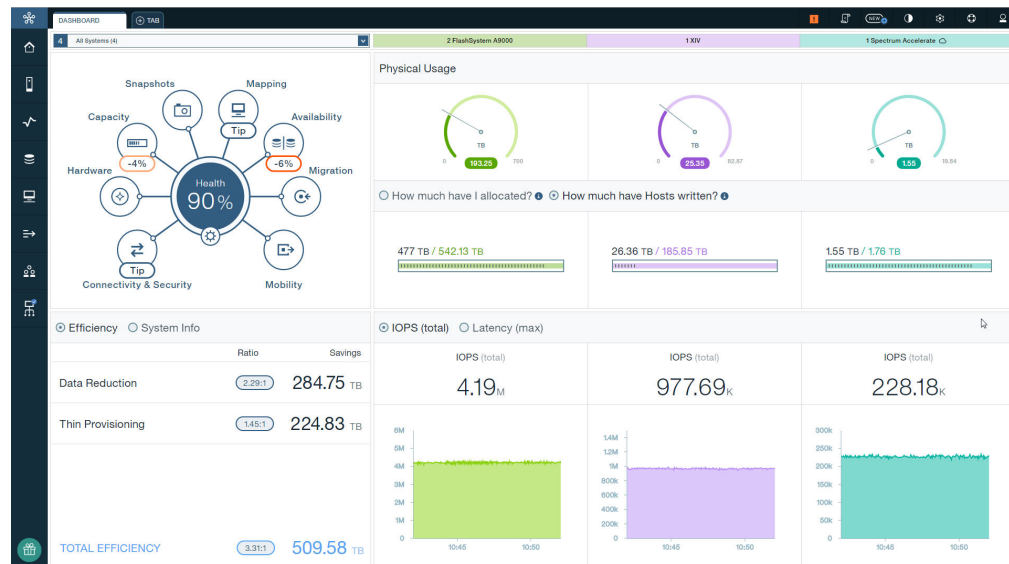


Figure 9. Dashboard

2. Click on one of the tabs above the gauges to display the selected tier, as shown:

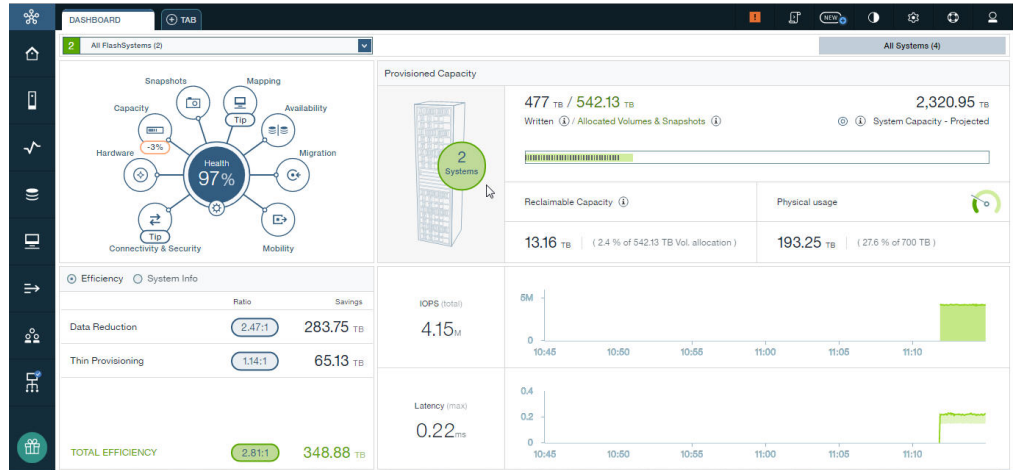


Figure 10. Select tier

- Click on the Systems widget to display the System table and properties. Volume and Snapshot allocation, and usage before and after data reduction can be easily monitored using the tabs and gauges in the form.

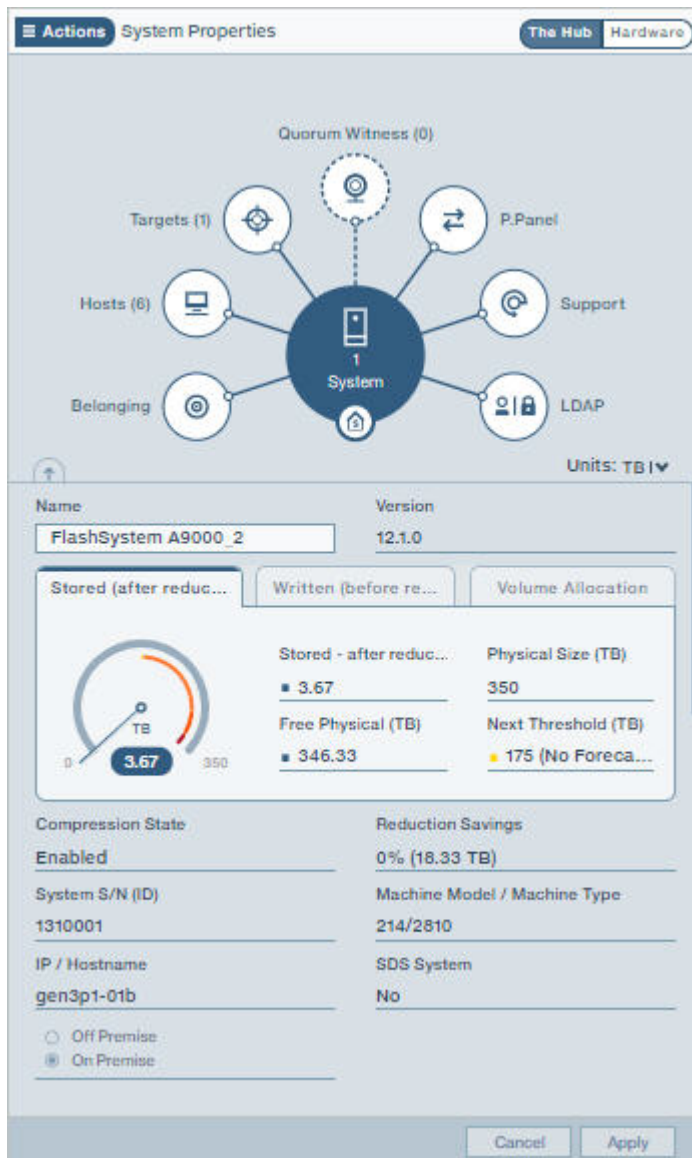


Figure 11. Capacity view

In IBM FlashSystems A9000 and A9000R systems, you can also see the physical capacity thresholds that trigger events about physical capacity consumption from the **Stored (after reduction)** gauge. An event of the defined severity is sent if the configured threshold value is reached or exceeded.

- To configure the physical thresholds on an IBM FlashSystem A9000 or IBM FlashSystem A9000R system, select **Actions > Capacity > Configure Physical Thresholds**.



---

## Chapter 6. Planning your capacity

IBM Hyper-Scale Manager provides capacity usage forecasts for IBM XIV Gen3, IBM Spectrum Accelerate and IBM FlashSystem A9000 and A9000R systems.

Whether you prefer looking at Statistics graphs, or exporting and analyzing collected data in a table or PDF report, you can use the IBM Hyper-Scale Manager UI to collect the data usage forecast you need for planning your System capacity.

### Collecting usage data for a storage system included in the inventory

The capacity usage for systems included in the inventory is once a day by the Management Server and stored in a **.dat** file on the server.

The capacity usage must meet several criteria for the forecast to be calculated:

- User must have sufficient access rights (role must be *Storage Administrator* or *Read-only*) for all of the systems included in the inventory.
- To present the trends, a sampling of 30 days is needed.
- A sufficient number of samples must be available. The forecast trend is not calculated if the number of samples is less than 30. If the system was not sampled for 14 days, then the system gathers 30 new samples, before the trend can again be presented.

If the sample fails, the Management Server samples the system every 15 minutes for a period of 12 hours. If the sample still fails, the operation is repeated the following day.

- System or storage pool utilization must be above 10%. If the system, or storage pool utilization, is less than 10%, no forecast is calculated.
- Trends cannot be calculated on pools that have no available space for volume allocation.
- If capacity is fluctuating or flat, or space utilization is decreasing, there is no trend.

### Collecting usage data for a system that is removed from the inventory

The Management Server collects capacity data for systems that are listed on the inventory. Removing a system from the inventory implies stopping the data collection. However, to overcome situations in which the system was mistakenly removed from the inventory, or removed from the inventory for a short period of time, the Management Server applies the following rules on collecting capacity data for systems that are removed from the inventory:

- As long as the system is listed on the inventory, the Management Server collects and keeps its capacity data.
- Whenever the system is removed from the inventory, its capacity data is not immediately deleted. It is kept until the next time slot on which the data is collected from the machine.
- If the system is returned to the inventory prior to arriving to the next collection time slot, the capacity usage and its continuity are kept.

- If the system is removed from the inventory, it is impossible to reset its capacity data. To reset the capacity data, the system has to be listed in the inventory.
  - If the user chooses to reset capacity data for all systems, even non-monitored systems capacity data will be reset.

---

## Generating a capacity planning report

You can generate a capacity planning report from IBM Hyper-Scale Manager UI.

### About this task

The Capacity Planning report is generated from either the System, Domain, or Pool views.

The structure of the file name is:

- CAPACITY\_PLANNING\_REPORTS\_yyyy-mm-dd\_hh-mm-ss.zip

The zip contains the Capacity Planning PDF named:

- CAPACITY\_PLANNING\_REPORTS\_yyyy-mm-dd\_hh-mm-ss.pdf (The filename can be changed by the user.)

### Procedure

Although there are multiple ways to generate a Capacity Planning Report, the following task describes how to generate a report from the Systems view.

---

**Note:** If you want to generate a Capacity report for multiple Systems, select the **Capacity Trend/Forecast Report** option from the **Actions** menu.

---

1. Select the system for which you want to generate a capacity report.
2. From the **Actions** menu, choose **Capacity > Capacity Trend/Forecast Report**. A download bar appears at the bottom of your screen with a link to the containing folder of the zip file.
3. Open the zip folder and click to open the PDF.

## Capacity planning report structure

The PDF file contains a formatted report with summarized informational graphics and graphs for each monitored System, Domain, and Pool.

The PDF report is divided into three parts:

- Part 1 - All System Types Usage (Physical)
- Part 2 - IBM FlashSystem A9000 and A9000R Pool Usage (Written)
- Part 3 - IBM XIV Gen3/Spectrum Accelerate Pool Usage (Physical)

Graphical representation illustrates the System and Pool capacity usage over periods of time, usage growth rates in GB per week, and detailed graphs per object capacity usage, respectively.

For example, System capacity physical usage over time shows an overall view for all of the systems in your inventory and a capacity forecast over the next 12 months:

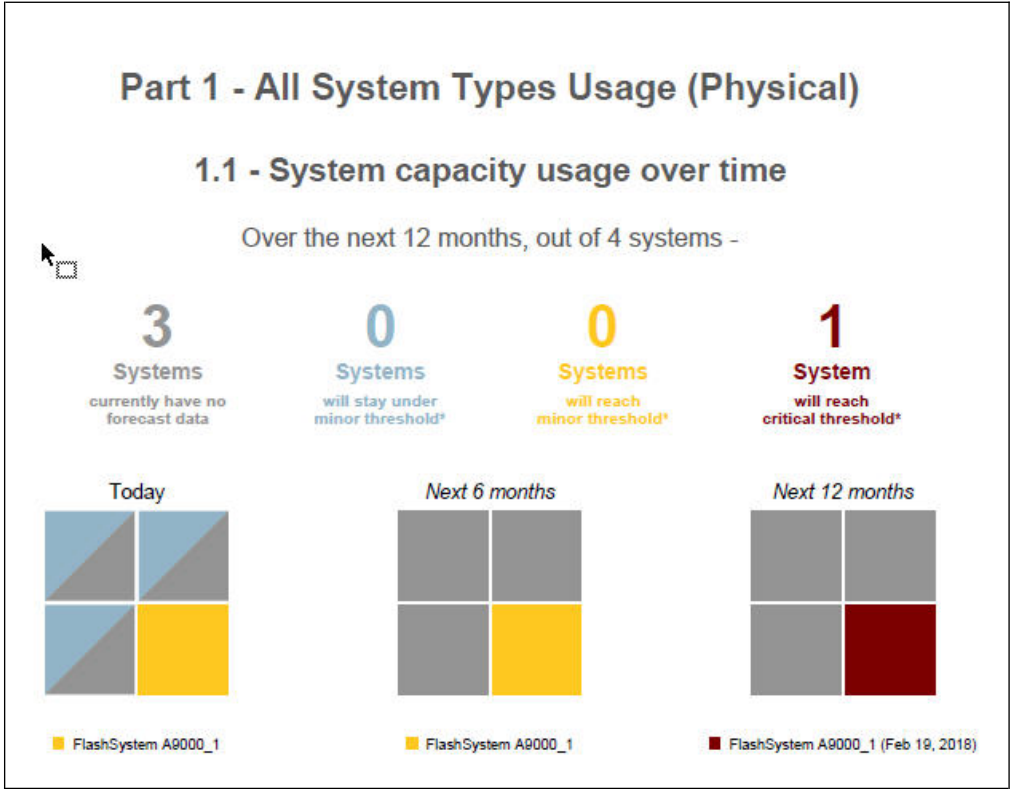


Figure 12. System allocation over time

The graph, Figure 13, ranks the system per used capacity growth rate.

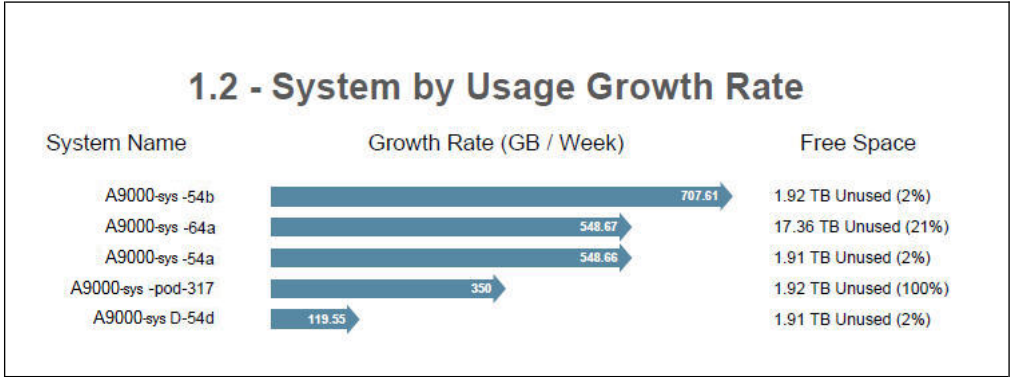


Figure 13. System by usage growth rate

And for each system, individual graphs show the progression of the system capacity usage growth and a forecast for when the used capacity is expected to reach its defined thresholds. See Figure 14 on page 34.

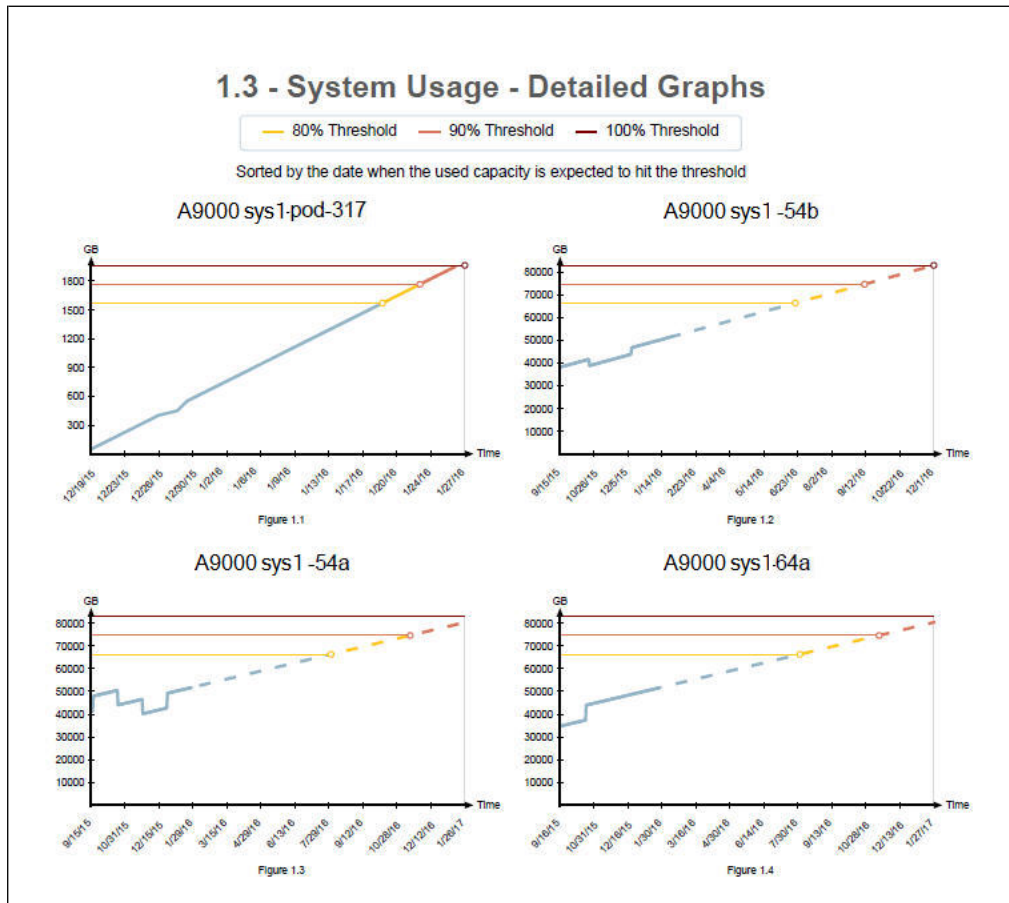


Figure 14. System usage - detailed graphs

## Monitoring capacity statistics

Monitoring Capacity statistics helps you get a clearer grasp on your capacity usage patterns to create better and more established plans for your space utilization and future demands.

From the **Statistics Views** graphs in the IBM Hyper-Scale Manager UI, monitor your Capacity history and get a Capacity forecast for your Systems, Pools and Hosts.

From the System view, choose from various filters to view the following System Capacity measurements:

### Physical Usage

Shows how much data is used on your System out of your System's physical size.

### Physical Usage + Forecast

Shows how much data is used on your System out of your System's physical size and what you can expect your System usage to be in the coming months.

### Written/Allocated

Shows how much data has been written to your System out of the space allocated or reserved on your System for Volumes and Snapshots.

**Written/Projected**

Shows how much data has been written to your System from your System's Projected System Capacity after Data Reduction.

**Written/Projected + Forecast**

Shows how much data has been written to your System from your System's Projected System Capacity after data reduction. In addition, you can see the forecast of how much data you can expect to be written to your System in the coming months.

**Projected/Actual**

Shows your projected capacity (how much data you expect to be written to your System) and what's actually been written.

From the Pool view, choose from various filters to view the following Volume usage measurements:

**Pool's Volume Usage**

Shows how much total space has been used by Volumes out of the available space on the Pool.

**Pool's Volume Usage + Forecast**

Shows how much total space has been used by Volumes out of the available space on the Pool and how much you can expect to use in the coming months.

From the Host view, choose from various filters to view the following Host measurements:

**Written by Host**

Shows how much data has been written from the Host to your System.

**Written by Host + Forecast**

Shows how much data has been written from the Host to your System. The forecast shows what you can expect to be written from the Host in the coming months.

---

## Moving capacity data between Management Server instances

The raw capacity planning data can be imported or exported from one IBM Hyper-Scale Manager to another and can also be reset to allow for collecting it anew.

### Exporting the raw capacity data

The raw capacity planning data can be transferred from one IBM Hyper-Scale Manager to another.

**About this task**

The raw data that was collected on one Management Server can be used by another Management Server to maintain the continuity of system history.

**Procedure**

1. From the IBM Hyper-Scale Manager text user interface (TUI) main menu, select **IBM Hyper-Scale manager Inventory Options**.
2. From the **IBM Hyper-Scale manager Inventory Options** menu, select **Manage Capacity Planning Data**.
3. Select **Export Capacity Data** from the **Manage Capacity Planning Data** menu.

```
-----  
----- Hyper-Scale Manager v5.x -----  
-----  
Manage Capacity Planning Data  
-----  
1) Import Capacity Data  
2) Export Capacity Data  
3) Reset Capacity Data  
4) Back to previous menu  
Your Selection>2  
The capacity data file (*.dat) was exported to the (/home/msms/hyperscale/files/export)  
folder  
Press any key to continue
```

4. The file is exported. Press any key.

### What to do next

Using the maintenance account, export the capacity data file created in this task from IBM Hyper-Scale Manager using SFTP to the target IBM Hyper-Scale Manager. The .dat file is stored in the export folder.

## Importing the raw capacity data

The capacity planning raw data can be transferred from one IBM Hyper-Scale Manager to another.

### Before you begin

Prepare a capacity data file that was created by another IBM Hyper-Scale Manager. SFTP to the target IBM Hyper-Scale Manager using the maintenance account. Put the .dat file in the upload folder.

### About this task

A report that was created on one Management Server can be used by another Management Server to maintain the continuity of system history.

### Procedure

1. From the IBM Hyper-Scale Manager text user interface (TUI) main menu, select **IBM Hyper-Scale manager Inventory Options**.
2. From the **IBM Hyper-Scale manager Inventory Options** menu, select **Manage Capacity Planning Data**.
3. Select **Import Capacity Data** from the **Manage Capacity Planning Data** menu.

```
-----  
----- Hyper-Scale Manager v5.x -----  
-----  
Manage Capacity Planning Data  
-----  
1) Import Capacity Data  
2) Export Capacity Data  
3) Reset Capacity Data  
4) Back to previous menu  
Your Selection>1  
Put the capacity data file (*.dat) in the (/home/msms/hyperscale/files/upload) folder  
Press any key to continue
```

4. Select from the available files in the upload folder. Press any key to continue. The file is imported. Restart the server.

## What to do next

Whenever you generate a new report, the IBM Hyper-Scale Manager unifies the imported data according to the following continuity rules:

- Data of systems that are not managed by both IBM Hyper-Scale Manager instances is no longer tracked.
- Data for systems that were already tracked by both IBM Hyper-Scale Manager instances will be overwritten to avoid duplicates.
- Data for systems that are currently tracked and whose data was not imported remains unchanged.

## Resetting the raw capacity data

The raw capacity planning data can be reset to allow for collecting it anew.

### About this task

To clear the system history from irregularities (that is, machine re-purposing), you can clear the machine history that is collected by IBM Hyper-Scale Manager and start gathering data from scratch. You can reset the capacity data for a single system, or for all of the systems that are managed by IBM Hyper-Scale Manager.

**Note:** The system has to be tracked for its data to be reset.

### Procedure

1. From the IBM Hyper-Scale Manager text user interface (TUI) main menu, select **IBM Hyper-Scale manager Inventory Options**.
2. From the **IBM Hyper-Scale manager Inventory Options** menu, select **Manage Capacity Planning Data**.
3. Select **Reset Capacity Data** from the **Manage Capacity Planning Data** menu. In the following example, the capacity data for a system named *mn52* is reset.

```
-----  
----- Hyper-Scale Manager v5.x -----  
-----  
Manage Capacity Planning Data  
-----  
1) Import Capacity Data  
2) Export Capacity Data  
3) Reset Capacity Data  
4) Back to previous menu  
Your Selection>3  
Please choose which system(s) capacity data to delete:  
  system - system address to delete its capacity data  
  --all - delete all systems capacity data  
> mn52  
Are you sure you want to delete all capacity data for system: mn52? [Y/N] >y  
Capacity data was reseted for:  mn52  
Press any key to continue
```

4. Press any step to return to the **Manage Capacity Planning Data** menu.





## Chapter 7. Troubleshooting latency issues

IBM FlashSystems A9000 and A9000R version 12.2.1 (or later) simplifies root cause analysis of latency issues by breaking down latency measurements as follows.

- *Internal Latency* - The accumulative duration of the **internal system** processing and data transport of an IO request.
- *External Latency* - The accumulative duration of processing and data transport of an IO request **outside the system**.

**Note:** The external latency includes the portion of host latency which is inseparable by the system, since the system cannot record the time on the host ports.

- *Total Latency* - The sum of both the internal latency and external latency.

The following illustration differentiates between internal and external latency measurements in a simplified manner. An actual timing chart would perhaps be more detailed, have differences for read and write operations, and may include repetitions, but all are beyond the scope of this document.

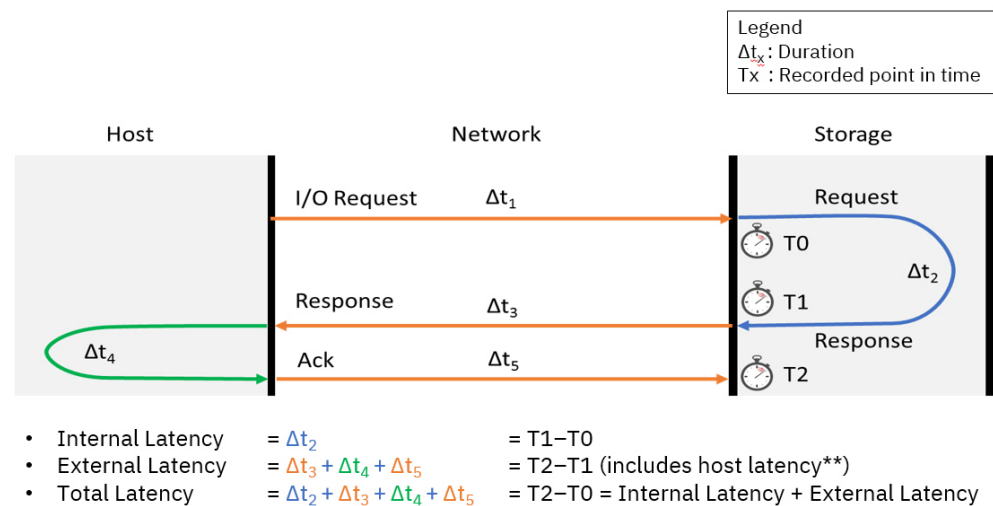


Figure 15. Illustration of the latency breakdown

A potential fault leading to a latency issue, can be easily narrowed down to "inside the system" or "outside the system" by viewing your statistics in IBM Hyper-Scale Manager. From the Host view, select a single Host and choose **Current Latency** or **Historic Latency** statistics.

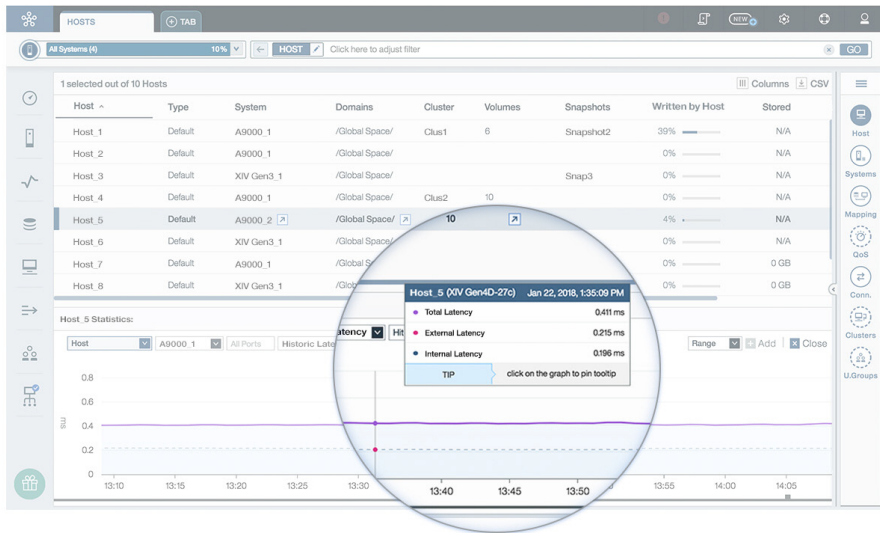


Figure 16. Latency view from Hyper-Scale Manager

Hover over the graphs to pinpoint any latency-related issues to better understand what's causing your latency.

---

## Chapter 8. Managing connectivity

System connectivity is the connection between two systems that are monitored by IBM Hyper-Scale Manager, or the connection between one system that's monitored and one that's not monitored.

Defining connectivity allows you to connect your system to a remote system for purposes of mirroring or data migration.

---

### Defining new connectivity

Before defining connectivity, however, you must first assign a target system to which you want to connect.

#### About this task

Follow these steps to define new connectivity from IBM Hyper-Scale Manager.

#### Procedure

1. Select **System and Domains Views > System Connectivity**.
2. From the Hub, click on **Targets**. The list of Targets is displayed in the **System Connectivity** form. If there are no Targets connected to this System, the display will be empty.
3. From the top of the **System Connectivity** form, click on the plus (+) sign to add a **Target**. The **Creating New Connectivity** form is displayed.

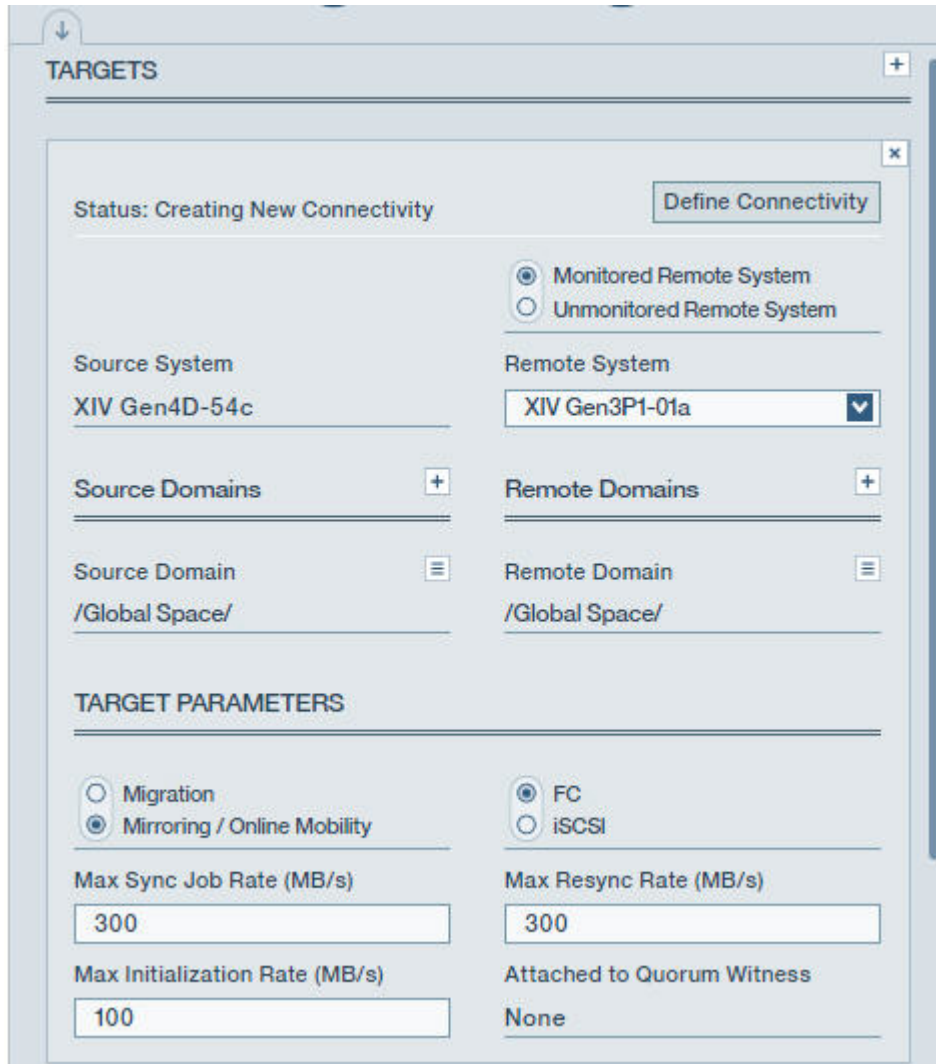


Figure 17. Creating new connectivity

4. Add a **Remote System** that is either monitored by Management Server or unmonitored and define all of its parameters, including Multi-tenancy. Click **Apply**.
5. Click **Define Connectivity** to view the **Connectivity Patch Panel** displaying the defined ports on the Source and Target systems. A dotted line between the Source and Target systems shows that the connectivity is not yet defined.

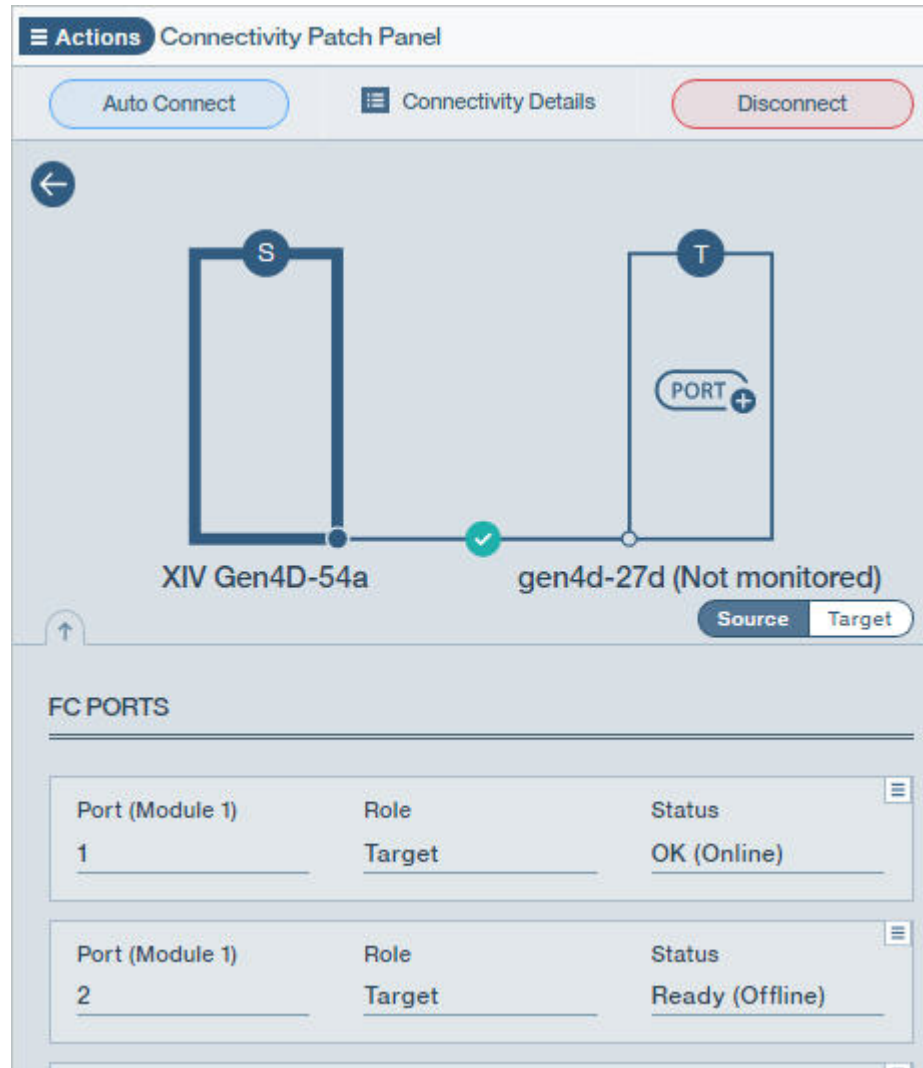


Figure 18. Connectivity patch panel

6. Click **Auto Connect**. The system sees all of the ports on the Target and connects the ports. You can switch between the Source and Target views on the **Connectivity Patch Panel** to see the ports and the port status defined on both.
7. To see a graphical image of the **Connectivity Patch Panel** and the connections between the ports of the Source and Target systems, click on **Connectivity Details**.

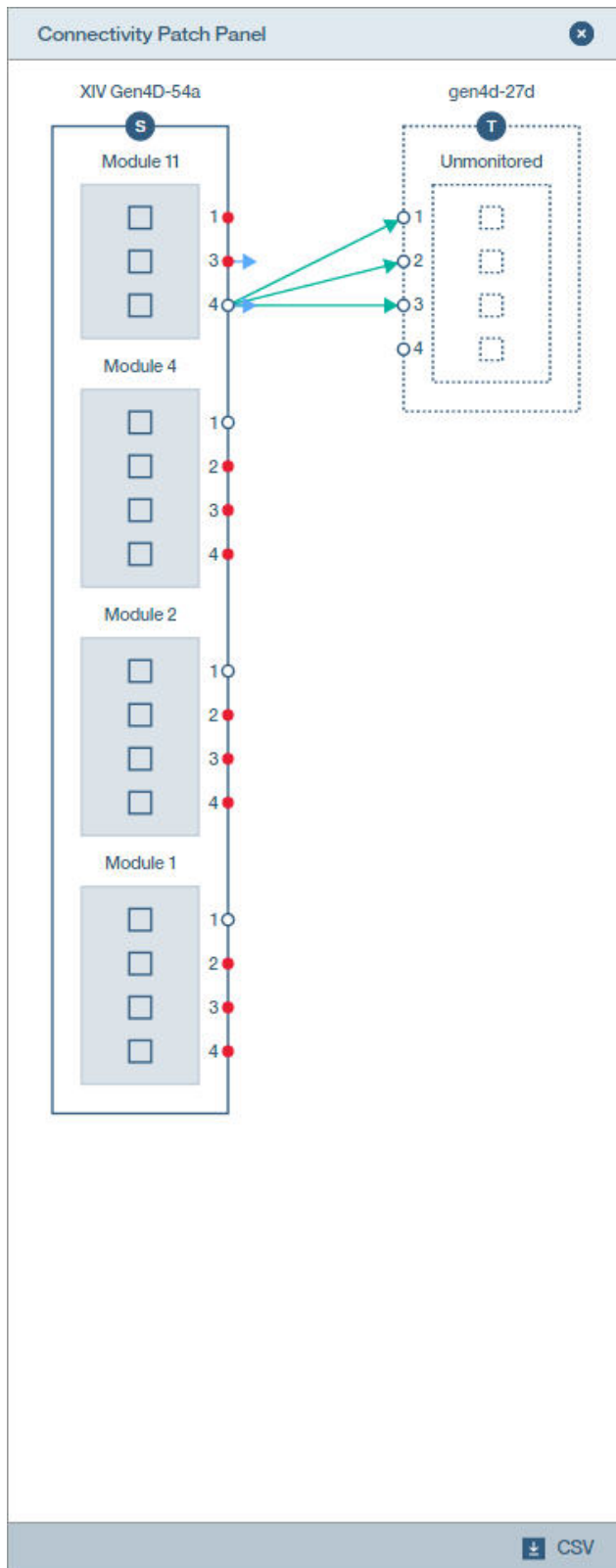


Figure 19. Connectivity details

Click **CSV** to download a more detailed report. A file can be found in the containing folder with a breakdown of all of the ports per module in the

system separated by Source and Target, including the port number, port type, port address, configured rate (Gbit), current rate (Gbit), status, and role.

## Defining connectivity on unmonitored systems

If you're defining connectivity on systems that aren't monitored by Management Server, you need to go to the Target display of the Connectivity Patch Panel.

### Procedure

1. Click **Add**. The **FC PORTS** or **ISCSI PORTS** form is displayed.
2. Type the IP Address or WWPN of the remote system, depending on the port type, and make sure the status is *active*.
3. Open the IBM Hyper-Scale Manager UI on the remote system to add the ports on the Target.
4. Click **Auto Connect**.





---

## Notices

These legal notices pertain to the information in this IBM Storage product documentation.

This information was developed for products and services offered in the US. This material may be available from IBM in other languages. However, you may be required to own a copy of the product or product version in that language in order to access it.

IBM may not offer the products, services, or features discussed in this document in other countries. Consult your local IBM representative for information on the products and services currently available in your area. Any reference to an IBM product, program, or service is not intended to state or imply that only that IBM product, program, or service may be used. Any functionally equivalent product, program, or service that does not infringe any IBM intellectual property right may be used instead. However, it is the user's responsibility to evaluate and verify the operation of any non-IBM product, program, or service.

IBM may have patents or pending patent applications covering subject matter described in this document. The furnishing of this document does not grant you any license to these patents. You can send license inquiries, in writing, to:

*IBM Director of Licensing  
IBM Corporation  
North Castle Drive, MD-NC119  
Armonk, NY 10504-1785  
USA*

For license inquiries regarding double-byte character set (DBCS) information, contact the IBM Intellectual Property Department in your country or send inquiries, in writing, to:

*Intellectual Property Licensing  
Legal and Intellectual Property Law  
IBM Japan Ltd.  
19-21, Nihonbashi-Hakozakicho, Chuo-ku  
Tokyo 103-8510, Japan*

INTERNATIONAL BUSINESS MACHINES CORPORATION PROVIDES THIS PUBLICATION "AS IS" WITHOUT WARRANTY OF ANY KIND, EITHER EXPRESS OR IMPLIED, INCLUDING, BUT NOT LIMITED TO, THE IMPLIED WARRANTIES OF NON-INFRINGEMENT, MERCHANTABILITY OR FITNESS FOR A PARTICULAR PURPOSE. Some states do not allow disclaimer of express or implied warranties in certain transactions, therefore, this statement may not apply to you.

This information could include technical inaccuracies or typographical errors. Changes are periodically made to the information herein; these changes will be incorporated in new editions of the publication. IBM may make improvements and/or changes in the product(s) and/or the program(s) described in this publication at any time without notice.

Any references in this information to non-IBM Web sites are provided for convenience only and do not in any manner serve as an endorsement of those Web sites. The materials at those Web sites are not part of the materials for this IBM product and use of those Web sites is at your own risk.

IBM may use or distribute any of the information you supply in any way it believes appropriate without incurring any obligation to you.

Licensees of this program who wish to have information about it for the purpose of enabling: (i) the exchange of information between independently created programs and other programs (including this one) and (ii) the mutual use of the information which has been exchanged, should contact:

*IBM Director of Licensing  
IBM Corporation  
North Castle Drive, MD-NC119  
Armonk, NY 10504-1785  
USA*

Such information may be available, subject to appropriate terms and conditions, including in some cases, payment of a fee.

The licensed program described in this document and all licensed material available for it are provided by IBM under terms of the IBM Customer Agreement, IBM International Program License Agreement or any equivalent agreement between us.

The performance data discussed herein is presented as derived under specific operating conditions. Actual results may vary.

Information concerning non-IBM products was obtained from the suppliers of those products, their published announcements or other publicly available sources. IBM has not tested those products and cannot confirm the accuracy of performance, compatibility or any other claims related to non-IBM products. Questions on the capabilities of non-IBM products should be addressed to the suppliers of those products.

All statements regarding IBM's future direction or intent are subject to change or withdrawal without notice, and represent goals and objectives only.

---

## Trademarks

IBM, the IBM logo, and [ibm.com](http://ibm.com) are trademarks or registered trademarks of International Business Machines Corp., registered in many jurisdictions worldwide. Other product and service names might be trademarks of IBM or other companies. A current list of IBM trademarks is available on the Web at "Copyright and trademark information" at [Copyright and trademark information website \(www.ibm.com/legal/copytrade.shtml\)](http://www.ibm.com/legal/copytrade.shtml).

Microsoft is a trademark of Microsoft Corporation in the United States, other countries, or both.

---

# Index

## Numerics

80%/90%/100% threshold 32

## A

Accounting

Capacity management 25

Understanding capacity 25

Adding Systems 6

analytics 36

## B

Backing up IBM Hyper-Scale  
Manager 17

backup 17

backup folder 36

## C

capacity analytics 35, 36, 37

Capacity Management

Provisioning capacity

Accounting 25

Effective capacity 25

Physical capacity 25

Reclaimable capacity 25

Total allocation 25

Written by Hosts 25

capacity planning 32

Capacity Planning PDF Report 32

Capacity report

generating a report 31

certificate

of the IBM Hyper-Scale Manager 10,  
12

Connectivity

Defining new connectivity 41

managing 39, 41

## D

Dashboard

health score 21

Domain usage 32

## E

Exporting capacity data 35

## F

forecast 32

forecasted capacity 32

## G

Generating a capacity planning  
report 32

## H

how to back up 17

Hyper-Scale Manager

Setting up Hyper-Scale Manager 5

## I

IBM Hyper-Scale Manager

Management server 3

Migrating your inventory from XIV

Management Tools 4.x 15

User Interface (UI) 3

IBM Hyper-Scale Manager certificate 10,  
12

Importing capacity data 36

Installation

IBM Hyper-Scale Manager 3

Management server 3

Introduction 1

inventory configuration and  
preferences 18

## L

Logging in

Advanced login 6

## M

maintenance account 36

Management server

Installation 3

Management Server

Monitoring account 3

Migrating to 5.x 15

Monitoring account

Management Server 3

Monitoring and statistics 34

Monitoring capacity 28

moving capacity data 35

## P

PDF file 32

Pool usage 32

pools statistics 32

## R

resetting the raw capacity data 37

restore 17

Restoring IBM Hyper-Scale Manager 18

## S

score 21

SFTP 36

Standalone application 36

structure of the PDF file 32

System allocation 32

System capacity

planning 31

System connectivity 41

System Health 21

## T

The report legend 32

threshold 32

## U

Uninstalling

IBM Hyper-Scale Manager 15

Upgrading

IBM Hyper-Scale Manager 14

upload folder 36

## V

Virtual appliance 36







Printed in USA

SC27-8560-08

