

Rational Test Control Panel



# System Administration Guide

*Version 8.0.0*

**Note**

Before using this information and the product it supports, read the information in “Notices” on page 63.

This edition applies to version 8.0.0 of Rational Test Control Panel and to all subsequent releases and modifications until otherwise indicated in new editions.

© **Copyright IBM Corporation 2001, 2012.**

US Government Users Restricted Rights – Use, duplication or disclosure restricted by GSA ADP Schedule Contract with IBM Corp.

# Contents

<b>About this Publication</b> .....	<b>v</b>
Intended Audience .....	vi
Scope .....	vi
Typographical Conventions .....	vi
Contacting IBM Support .....	vi
<b>Introduction</b> .....	<b>1</b>
Functional Overview .....	2
Technical Overview .....	3
<b>Getting Started</b> .....	<b>4</b>
Logging In/Out .....	5
Logging In .....	5
Logging Out .....	9
Navigating the User Interface .....	10
Support for Standard Web Browser Functionality .....	11
<b>Managing Users</b> .....	<b>12</b>
Security Model .....	13
User-Types and Privileges .....	13
Creating Users .....	16
Modifying Users .....	19
Changing Your Login Password .....	20
Changing Other Users' Login Passwords .....	21
Assigning/Removing Administrative Privileges .....	24
Deleting Users .....	26

---

<b>Managing Domains</b>	<b>30</b>
Domains and Environments Explained	31
Creating Domains	32
Rational Test Control Panel Method	33
Rational Integration Tester Method	37
Modifying Domains	41
Renaming Domains	41
Modifying Rational Test Virtualization Server Project Results Database Settings	43
Deleting Stubs	46
Deleting Domains	47
<b>Administering Proxies</b>	<b>48</b>
Viewing Proxies	49
Modifying Log Levels	51
<b>Viewing Logs</b>	<b>52</b>
Viewing Rational Test Control Panel's Audit Log	53
Viewing Rational Test Control Panel's Activity Log	56
<b>Troubleshooting</b>	<b>60</b>
Resolving Apache Tomcat Server Problems	61
<b>Glossary</b>	<b>62</b>
<b>Notices</b>	<b>63</b>
Trademarks and service marks	66

# About this Publication

## **Contents**

### **Intended Audience**

### **Scope**

### **Typographical Conventions**

### **Contacting IBM Support**

This guide describes IBM® Rational® Test Control Panel and how to administer it.

---

## Intended Audience

This document is intended primarily for IBM Rational Test Control Panel administrators.

**NOTE:** IBM Rational Test Virtualization Server users who are not Rational Test Control Panel administrators should refer to *IBM Rational Test Virtualization Server Reference Guide*.

## Scope

This document describes how to use Rational Test Control Panel, which is a server-based web application that is used primarily to administer Rational Test Virtualization Server. The application also enables users to accomplish other tasks that are not related to Rational Test Virtualization Server.

For information about installing Rational Test Control Panel, refer to *IBM Rational Test Control Panel Installation Guide*.

For information about using Rational Test Virtualization Server, refer to *IBM Rational Test Virtualization Server Reference Guide*.

## Typographical Conventions

The following typographical conventions are observed throughout this document:

Type	Usage
Constant Width	Program output, listings of code examples, file names, commands, options, configuration file parameters, and literal programming elements in running text.
<i>Italic</i>	Document title names in statements that refer you to other documents. Also used to highlight concepts when first introduced.
<b>Bold</b>	Menu items in graphical user interface windows (such as Microsoft Windows-based or UNIX X Window applications) from which you select options or execute macros and functions. Submenus and options of a menu item are indicated with a “greater than” sign, such as <b>Menu &gt; Submenu</b> or <b>Menu &gt; Option</b> .

## Contacting IBM Support

To contact IBM Support, see: [www.ibm.com/contact/us/en/](http://www.ibm.com/contact/us/en/)

# Introduction

## **Contents**

### **Functional Overview**

### **Technical Overview**

This chapter provides an overview of Rational Test Control Panel.

---

## 1.1 Functional Overview

Rational Test Virtualization Server stubs designed in Rational Integration Tester are published to Rational Test Control Panel, which holds them in a repository. Rational Test Control Panel users can control stubs by means of web pages; and Rational Test Control Panel also manages the Rational Test Virtualization Server environment so that, where possible, messages are routed automatically to the stubs. (For more information about stubs, refer to *IBM Rational Test Virtualization Server Reference Guide*.)

Rational Test Control Panel also enables you to schedule the execution of test suites on a single schedule basis or a recurring schedule basis.

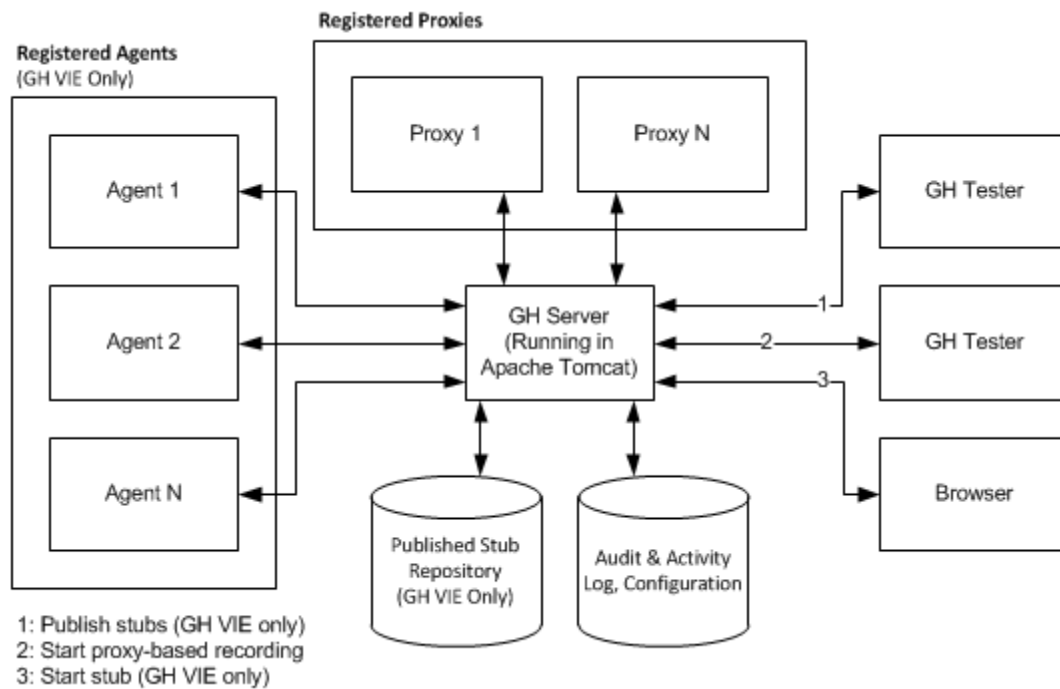
If you are using any of the proxies in the Rational Integration Tester Platform Pack, you will have to install and configure Rational Test Control Panel because it provides a central registration point for the proxies so that multiple instances of Rational Integration Tester can find and communicate with them.



---

## 1.2 Technical Overview

The following diagram shows how Rational Test Control Panel might be deployed in a Rational Test Virtualization Server Environment.



For information about Rational Test Control Panel's hardware and software requirements, refer to *IBM Rational Test Control Panel Installation Guide*.

# Getting Started

## **Contents**

**Logging In/Out**

**Navigating the User Interface**

This chapter describes how to start using Rational Test Control Panel.

---

## 2.1 Logging In/Out

The following sections describe how to log into, and log out from, Rational Test Control Panel.

### 2.1.1 Logging In

To log into Rational Test Control Panel:

1. Open a web browser and enter a URL of the following format:

*http://localhost:<Port Number Specified During Installation of Rational Test Control Panel>/RTCP/*

Alternatively:

- If you are using Windows, click **Start > (All) Programs > IBM > Rational Test Control Panel > Connect**.
- If you are using Rational Integration Tester, clicking **Open** next to the **URL** field on the **Server Settings** tab of the Project Settings dialog box opens your computer's default web browser with Rational Test Control Panel's default URL displayed in the browser's address bar (you may have to edit the default URL before clicking **Open**).

If Rational Test Control Panel's built-in security functionality is enabled (for information about Rational Test Control Panel security, refer to [Managing Users](#)), Rational Test Control Panel's Login screen is displayed.



Otherwise, Rational Test Control Panel's application window is displayed and there is no need to enter any login details.

2. In the **Username** and **Password** fields, enter a user name and password.

The user name and password that you must enter will depend on the security model option that was selected and configured while installing Rational Test Control Panel. For example, if you installed Rational Test Control Panel and Rational Test Control Panel's built-in security functionality is enabled, you should enter the user name and password that you entered during installation. (For information about Rational Test Control Panel security model options, refer to *IBM Rational Test Control Panel Installation Guide* and to [User-Types and Privileges](#)).

**NOTE:** For information about changing default passwords and adding more users, refer to [Creating Users](#) and [Modifying Users](#).

3. Click **Log in**.

Rational Test Control Panel's application window is displayed.



During initial login after Rational Test Control Panel is installed, the software runs in reduced functionality mode (as indicated by a banner) until a valid Rational Test Control Panel license key is entered. (For information about entering Rational Test Control Panel license keys, refer to *IBM Rational Test Control Panel Installation Guide*.)

---

After entering a valid Rational Test Control Panel license key, Rational Test Control Panel's **Home** page changes.



**NOTE:** The **VIE** (Virtual Integration Environment) icon and **VIE** link are displayed on the application window only if your Rational Test Control Panel license entitles you to use Rational Test Virtualization Server.

---

### 2.1.2 Logging Out

To log out from Rational Test Control Panel:

1. Click **LOGOUT** on the upper right corner of Rational Test Control Panel's application window.

A confirmation prompt is displayed.



2. Click **OK**.

You have now quitted the application.

**NOTE:** If Rational Test Control Panel's security functionality is disabled, the **LOGOUT** button is not displayed, so quitting your web browser will enable you to quit the Rational Test Control Panel application.

---

## 2.2 Navigating the User Interface

After logging into Rational Test Control Panel successfully, Rational Test Control Panel's **Home** page is displayed (refer to [Logging In](#)).

The following table describes how to use the screen controls on the **Home** page.

Clicking the...	Displays...	For more information, refer to...
Logo or <b>Home</b> navigation link	The <b>Home</b> page.	(Not applicable)
<b>Scheduling</b> icon or navigation link	The <b>Scheduling</b> page.	<i>IBM Rational Integration Tester Reference Guide</i>
<b>Agents</b> icon or navigation link	The <b>Agents</b> page.	<i>IBM Rational Test Virtualization Server Reference Guide</i> and <a href="#">Administering Proxies</a>
<b>VIE</b> icon or navigation link <b>NOTE:</b> This icon/link is displayed only if your Rational Test Control Panel license entitles you to use Rational Test Virtualization Server.	The <b>VIE</b> page.	<i>IBM Rational Test Virtualization Server Reference Guide</i>
<b>Administration</b> icon or navigation link <b>NOTE:</b> The numbers of tabs displayed on the <b>Administration</b> page depends on whether you are a Rational Test Control Panel administrator or a "normal" user.	The <b>Administration</b> page.	<a href="#">Managing Users</a>
<b>LOGOUT</b> button <b>NOTE:</b> This button is not displayed if Rational Test Control Panel's security functionality is disabled.	A logout confirmation prompt.	<a href="#">Logging Out</a> <b>NOTE:</b> For information about Rational Test Control Panel security, refer to <a href="#">Security Model</a> and to <i>IBM Rational Test Control Panel Installation Guide</i> .
<b>ABOUT</b> button	Software version information and IBM contact information.	(Not applicable)

---



---

### 2.2.1 Support for Standard Web Browser Functionality

Rational Test Control Panel supports the use of a web browser's **Back** and **Forward** buttons for navigation.

You can also bookmark most areas of Rational Test Control Panel for quick access to common locations. For example, if you use a particular domain/environment pair on the **VIE** page on a regular basis, this can be bookmarked and displayed directly (after logging into Rational Test Control Panel) without having to click the **VIE** icon or link on Rational Test Control Panel's **Home** page.

Most Rational Test Control Panel pages have a five-second timer and relevant status information is refreshed in the background. To reload a page, click your browser's **Reload** button, or click the last navigation link ("breadcrumb") in the navigation bar under the logo on Rational Test Control Panel's application window.

# Managing Users

## **Contents**

**Security Model**

**Creating Users**

**Modifying Users**

**Deleting Users**

This chapter describes Rational Test Control Panel's security model and how to administer Rational Test Control Panel users.

---

## 3.1 Security Model

Rational Test Control Panel has a simple security model. The features available within Rational Test Control Panel depend on the security model option chosen during installation but the application's security settings can be changed at any time after installation. (For information about Rational Test Control Panel security model options and how to configure them, refer to *IBM Rational Test Control Panel Installation Guide*.)

The following section discusses the relationship between Rational Test Control Panel security and Rational Test Control Panel user-types and privileges.

### 3.1.1 User-Types and Privileges

Rational Test Control Panel users are either “normal” users or “administrators”. Administrators can perform more tasks within Rational Test Control Panel than normal users.

The following table outlines how Rational Test Control Panel access rights are determined by the security model option used.

<b>If this Rational Test Control Panel security model option is being used...</b>	<b>Who can access Rational Test Control Panel as a “normal” user?</b>	<b>Who can be a Rational Test Control Panel administrator?</b>
None	Anyone who knows the Rational Test Control Panel application's URL.	Anyone who knows the Rational Test Control Panel application's URL.  <b>NOTE:</b> This means that users cannot be created within the Rational Test Control Panel application.
Rational Test Control Panel Built-in	Anyone who has been assigned a Rational Test Control Panel user name and password by a Rational Test Control Panel administrator.	When creating or modifying users, an administrator can specify that a particular user is an administrator.

---

---

<b>If this Rational Test Control Panel security model option is being used...</b>	<b>Who can access Rational Test Control Panel as a “normal” user?</b>	<b>Who can be a Rational Test Control Panel administrator?</b>
Active Directory/Local Directory Access Protocol (LDAP)	Any user with an Active Directory/LDAP user account that is a member of an Active Directory/LDAP user group that was selected during (or after) installation of Rational Test Control Panel.	A Rational Test Control Panel administrator must have an Active Directory/LDAP user account that is a member of an Active Directory/LDAP administrators group that was selected during (or after) installation of Rational Test Control Panel.

---

---

The following table compares Rational Test Control Panel tasks that can be accomplished by Rational Test Control Panel administrators with those that can be accomplished by all Rational Test Control Panel users.

<b>Rational Test Control Panel administrators can...</b>	<b>All Rational Test Control Panel users can...</b>
<ul style="list-style-type: none"><li>• Change the Rational Test Control Panel login passwords of other users and assign administrative privileges to other users if Rational Test Control Panel's built-in security functionality is being used.</li></ul> <p><b>NOTE:</b> If Rational Test Control Panel's Active Directory or LDAP security models are being used, "user administrator" tasks are managed by Active Directory or LDAP (whichever is applicable).</p> <ul style="list-style-type: none"><li>• Create, rename, and delete domains.</li><li>• Remove published stubs.</li><li>• View Rational Test Control Panel's activity and audit logs.</li></ul>	<ul style="list-style-type: none"><li>• Change their Rational Test Control Panel login passwords within Active Directory or LDAP (whichever is applicable) if Rational Test Control Panel's Active Directory or LDAP security models are being used.</li><li>• Change their own Rational Test Control Panel login passwords within Rational Test Control Panel if Rational Test Control Panel's built-in security functionality is being used.</li><li>• View the Rational Test Virtualization Server "landscape" and start and stop stubs.</li><li>• View agents.</li><li>• View and modify scheduled tests.</li></ul>

The following sections describe how to create, maintain, and delete Rational Test Control Panel users.

**NOTE:** The remainder of this document assumes that Rational Test Control Panel's built-in security functionality is being used, so the document assumes that users log into (and out from) the Rational Test Control Panel application. If you are using a different security model option, you can ignore the references to logging in/out.

---

## 3.2 Creating Users

If Rational Test Control Panel's built-in security is being used, you can create new Rational Test Control Panel users if you are a Rational Test Control Panel administrator.

**NOTE:** If Rational Test Control Panel's Active Directory or LDAP security model options are being used, Rational Test Control Panel is not used to create new Rational Test Control Panel users. Instead, Active Directory or LDAP tools (whichever are applicable) are used to create new Rational Test Control Panel users.

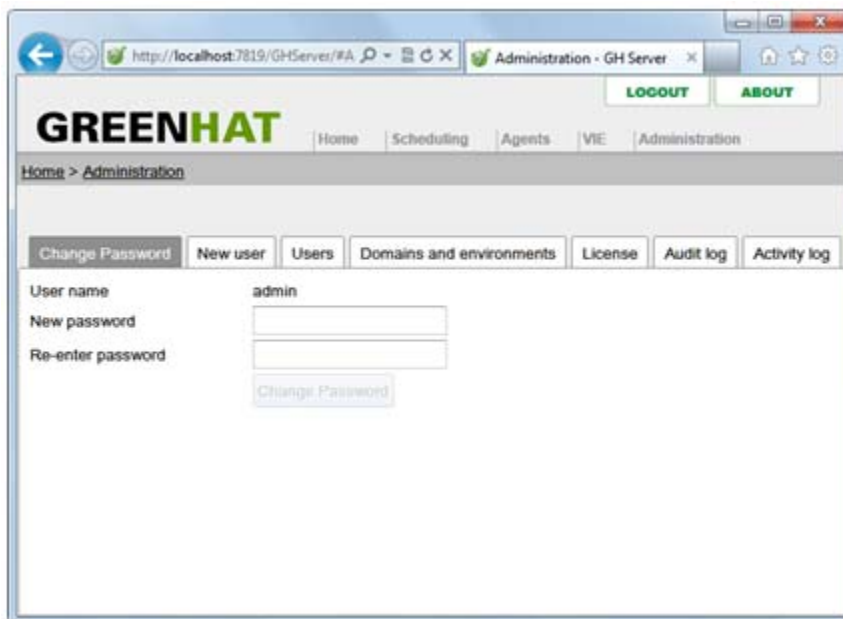
To create a new user:

1. Log into Rational Test Control Panel.
2. Click the **Administration** navigation link.

Alternatively, click the **Administration** icon on the **Home** page.

**NOTE:** The **Administration** icon and link are displayed only if you are a Rational Test Control Panel administrator.

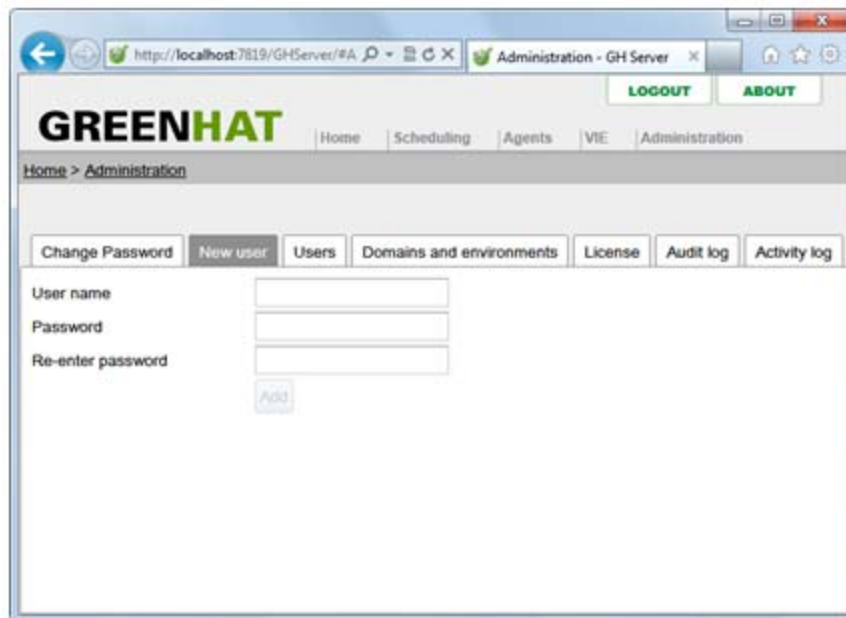
The **Administration** page is displayed.



3. Click the **New user** tab.

---

The **New user** tab is displayed.



4. In the **User name** field, enter the user name of the new user.
5. **Optional:** In the **Password** and **Re-enter password** fields, enter and re-enter a password for the new user.

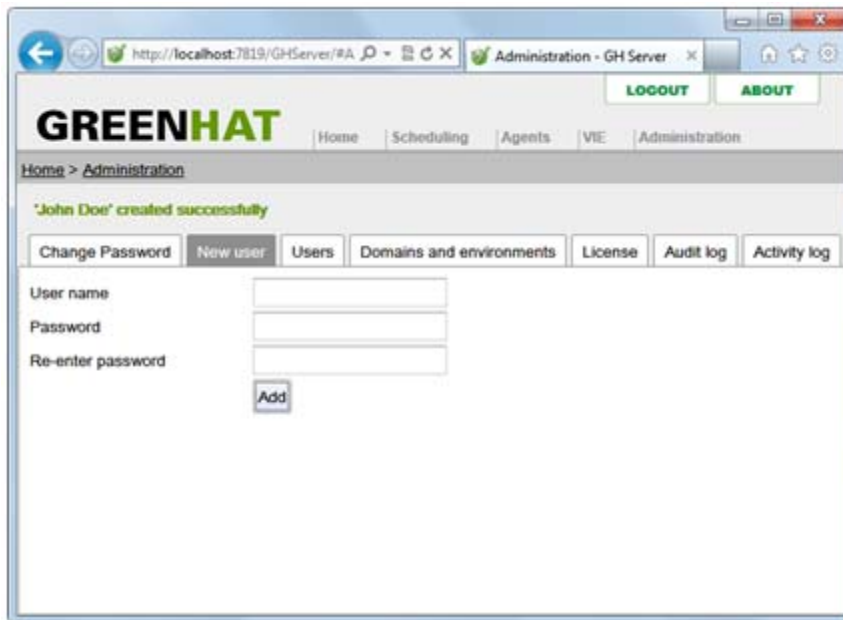
**NOTE:** If a password is entered, it must be unique but it can contain spaces and there is no limit on the number of characters that can be used.

6. Click **Add**.

The new user is created.

---

A status message is displayed to confirm this.



The new user can use the user name and password (if specified) to log into Rational Test Control Panel.

**NOTE:** To specify that a new user (or an existing user) is a Rational Test Control Panel administrator, refer to [Modifying Users](#).



---

## 3.3 Modifying Users

The following table shows how user maintenance in Rational Test Control Panel is affected by the Rational Test Control Panel security model option being used and by user privileges.

---

<b>If this Rational Test Control Panel security model option is being used...</b>	<b>And a Rational Test Control Panel user is...</b>	<b>Then...</b>
None	A “normal” user	There is no concept of a Rational Test Control Panel administrator user and all Rational Test Control Panel users have the same privileges, so there are no user details to be maintained.
Rational Test Control Panel Built-in	A “normal” user	The user can modify his or her Rational Test Control Panel login password (for information about this, refer to <a href="#">Changing Your Login Password</a> ).
	An administrator	The user can change the passwords of other Rational Test Control Panel users and assign (and remove) administrative privileges to (from) other Rational Test Control Panel users (for information about this, refer to <a href="#">Changing Other Users’ Login Passwords</a> and <a href="#">Assigning/Removing Administrative Privileges</a> ).

---

---

---

<b>If this Rational Test Control Panel security model option is being used...</b>	<b>And a Rational Test Control Panel user is...</b>	<b>Then...</b>
Active Directory/Local Directory Access Protocol (LDAP)	A “normal” user	The user can use Active Directory/LDAP tools (whichever are applicable) to change his or her Rational Test Control Panel login password.
	An administrator	The user can use Active Directory/LDAP tools (whichever are applicable) to change his or her Rational Test Control Panel login password.
		A Rational Test Control Panel user’s privileges are determined by Active Directory/LDAP membership and not by any settings within Rational Test Control Panel.

---

The following sections describe how to maintain login passwords and privileges of Rational Test Control Panel users.

### 3.3.1 Changing Your Login Password

If Rational Test Control Panel’s built-in security model is being used, you can change your Rational Test Control Panel login password at any time irrespective of your Rational Test Control Panel user privileges.

To change your login password:

1. In the **Password** and **Re-enter password** fields, enter and re-enter a new password (your user name should be displayed on the tab).

**NOTE:** A password must be unique but it can contain spaces and there is no limit on the number of characters that can be used.

2. Click **Change Password**.

---

**NOTE:** The **Change Password** button becomes unavailable if the passwords entered in the **Password** and **Re-enter password** fields are different.

Your password is changed. A status message is displayed to confirm this.



### 3.3.2 Changing Other Users' Login Passwords

If Rational Test Control Panel's built-in security model is being used and you are a Rational Test Control Panel administrator, you can change the login passwords of other Rational Test Control Panel users.

To change the login password of another Rational Test Control Panel user:

1. Log into Rational Test Control Panel.
2. Click the **Administration** navigation link.

Alternatively, click the **Administration** icon on the **Home** page.

The **Administration** page is displayed.

3. Click the **Users** tab.

**NOTE:** The **Users** tab will not be displayed on the **Administration** page unless you are Rational Test Control Panel administrator.

---

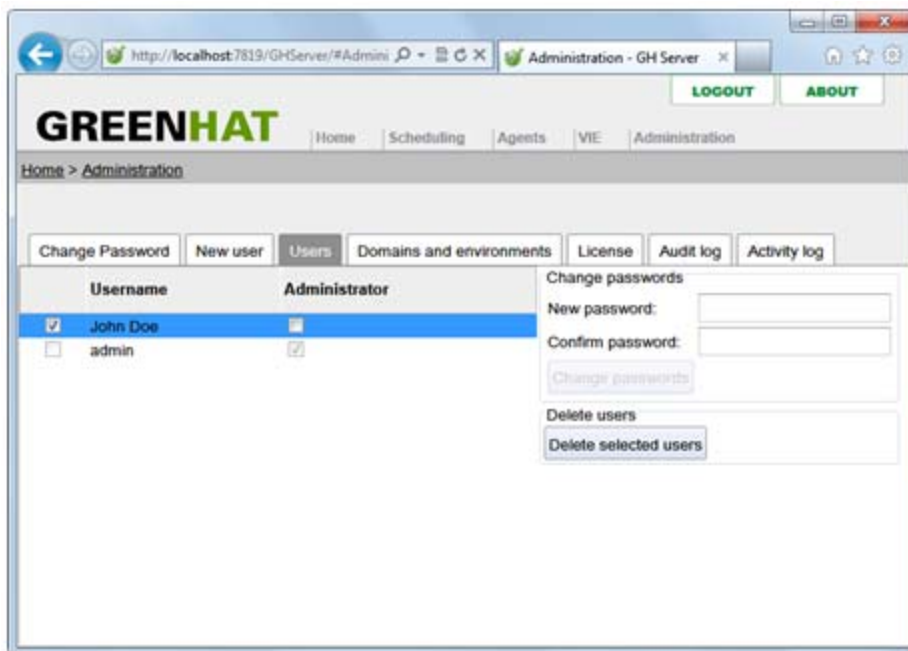
The **Users** tab is displayed.



4. Select the check box next to the user's user name.

**NOTE:** You cannot select your own user name.

A **New password** field, a **Confirm password** field, a **Change passwords** button, and a **Delete selected users** button are displayed on the **Users** tab.



5. In the **New password** and **Confirm password** fields, enter and re-enter a new password.

**NOTE:** If a new password is entered, it must be unique but it can contain spaces and there is no limit on the number of characters that can be used.

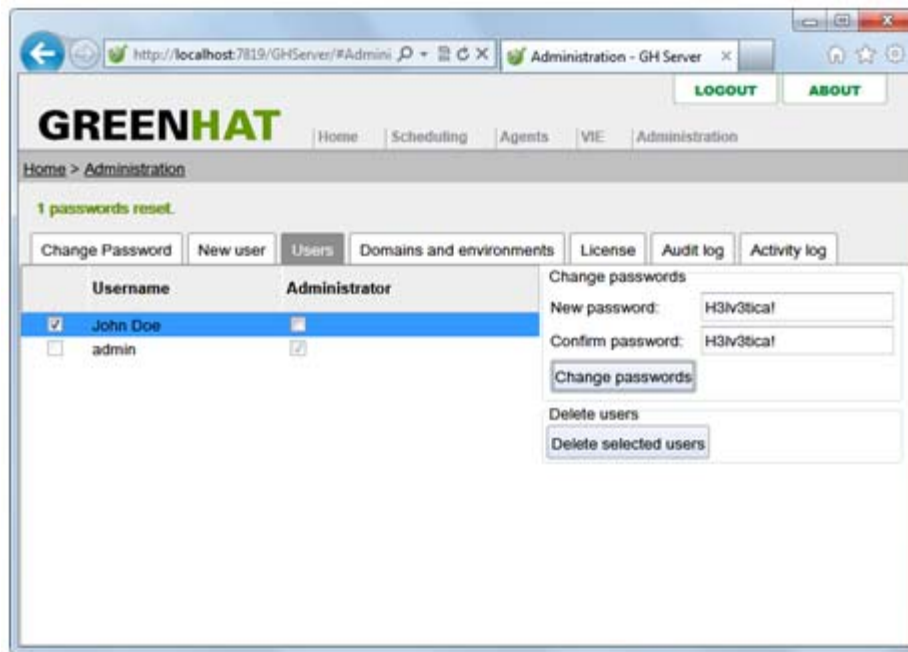
6. Click **Change passwords**.

**NOTE:** The **Change passwords** button is unavailable until the **New password** and **Confirm password** fields contain the same password.

The user's password is changed.

---

A status message is displayed to confirm this.



### 3.3.3 Assigning/Removing Administrative Privileges

If Rational Test Control Panel's built-in security functionality is being used and you are a Rational Test Control Panel administrator, you can assign and remove administrative privileges to and from other Rational Test Control Panel users.

To assign/remove administrative privileges to/from other Rational Test Control Panel users:

1. Log into Rational Test Control Panel.
2. Click the **Administration** navigation link.

Alternatively, click the **Administration** icon on the **Home** page.

The **Administration** page is displayed.

3. Click the **Users** tab.

**NOTE:** The **Users** tab will not be displayed on the **Administration** page unless you are Rational Test Control Panel administrator.

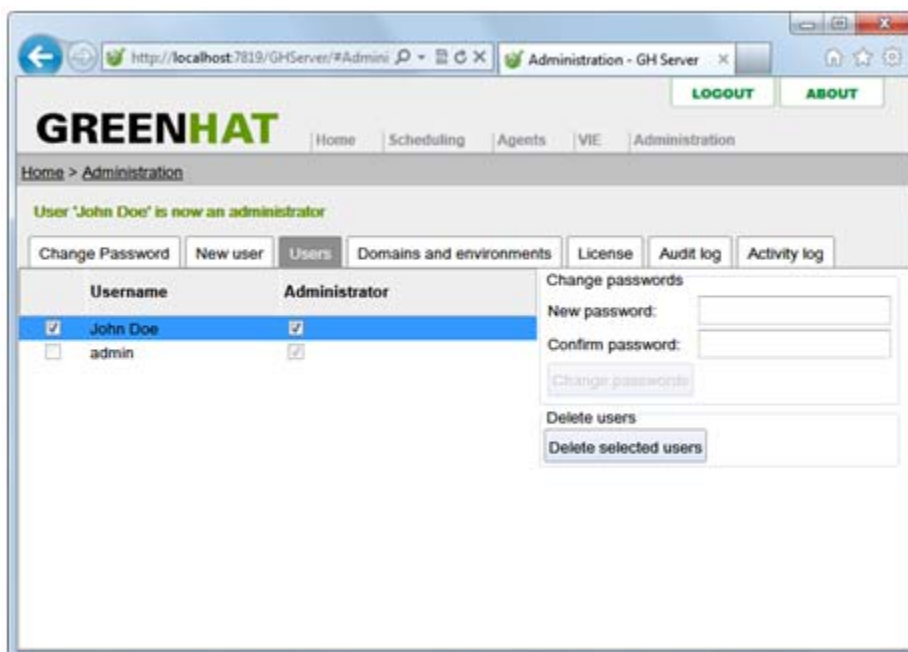
The **Users** tab is displayed.

- 
4. Select the check box next to the user's user name.

**NOTE:** You cannot select your own user name.

5. To assign administrative privileges to the currently selected user, select the **Administrator** check box next to the user's user name.

The user's privileges are changed. A status message is displayed to confirm this.



Alternatively, to remove administrative privileged from the currently selected user, clear the **Administrator** check box next to the user's user name.

The user's privileges are changed. A status message is displayed to confirm this.

---

## 3.4 Deleting Users

The following table shows how deletion of users in Rational Test Control Panel is affected by the Rational Test Control Panel security model option being used and by user privileges.

<b>If this Rational Test Control Panel security model option is being used...</b>	<b>And a Rational Test Control Panel user is...</b>	<b>Then...</b>
None	A “normal” user	There is no concept of a Rational Test Control Panel administrator user and all Rational Test Control Panel users have the same privileges, so there is no need to “delete” any Rational Test Control Panel users.
Built-in	A “normal” user	The user cannot delete his or her user details from Rational Test Control Panel.
	An administrator	The user can delete other Rational Test Control Panel users and administrators.  However, a Rational Test Control Panel administrator <b>cannot</b> delete his or her user details from Rational Test Control Panel.
Active Directory/LDAP	A “normal” user	An Active Directory/LDAP administrator (whichever are applicable) can “delete” that Rational Test Control Panel user by changing the user’s Active Directory/LDAP membership details.
	An administrator	An Active Directory/LDAP administrator (whichever are applicable) can “delete” that Rational Test Control Panel administrator by changing the user’s Active Directory/LDAP membership details.

---



---

Therefore, if you want to use Rational Test Control Panel to delete the details of a Rational Test Control Panel user (other than yourself), Rational Test Control Panel's built-in security functionality must be used and you **must** be a Rational Test Control Panel administrator.

---

To use Rational Test Control Panel to delete a Rational Test Control Panel user:

1. Log into Rational Test Control Panel.
2. Click the **Administration** navigation link.

Alternatively, click the **Administration** icon on the **Home** page.

The **Administration** page is displayed.

3. Click the **Users** tab.

**NOTE:** The **Users** tab will not be displayed on the **Administration** page unless you are Rational Test Control Panel administrator.

The **Users** tab is displayed.

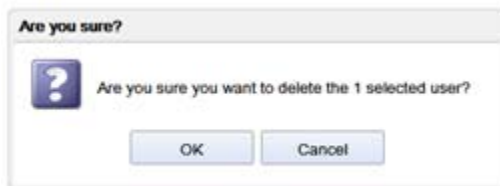
4. Select the check box next to the user's user name.

**NOTE:** You cannot select your own user name.

5. Click **Delete selected users**.

**NOTE:** The **Delete selected users** button is unavailable until a user is selected.

A confirmation prompt is displayed.



6. Click **OK**.

The selected user is deleted.

---

A status message is displayed to confirm this.



The deleted user will no longer be able to log into Rational Test Control Panel (unless a different security model option is selected and configured).

# Managing Domains

## **Contents**

**Domains and Environments  
Explained**

**Creating Domains**

**Modifying Domains**

**Deleting Domains**

This chapter describes how to manage domains in Rational Test Control Panel.

---

## 4.1 Domains and Environments Explained

A *domain* represents a logical grouping of related systems that are part of a real business project and it is the basic unit of management within Rational Test Virtualization Server. It may be served by one or more Rational Integration Tester or Rational Test Virtualization Server projects, depending on how large or small the domain is, and how many Rational Integration Tester/Rational Test Virtualization Server users are working on it.

It is usual for a service or other endpoint to appear in more than one domain because it is reused by different business projects in different contexts. Thus, a domain is used as a means to group and manage assets in Rational Test Control Panel. For example, unique business groups within an organization may want to manage stubs independently from each other.

Stubs created in Rational Test Virtualization Server are published into domains, and Rational Integration Tester agents and proxies can be restricted so that they accept instructions only from stubs running in particular domains.

Thus, after stubs have been published to Rational Test Control Panel, they can be started and stopped by using Rational Test Control Panel, and the routing of messages (to stubs or live systems) can be controlled at domain level.

A domain can contain one or more *environments*. In Rational Integration Tester and Rational Test Virtualization Server, an environment enables users to define groups of variables or tags that can be used in both tests and in transport definitions.

Typically, environments are used to create configurations for different parts of a software product development workflow, for example, development, quality assurance, user acceptance testing, and so on.

Environments are not created directly within Rational Test Control Panel. Instead, they are created automatically when stubs are published from Rational Test Virtualization Server (because stubs are published into an environment within a domain) or when a Rational Integration Tester Proxy or Agent registers with Rational Test Control Panel specifying an environment name.

The following sections describe how to create, modify, and delete domains.

---

## 4.2 Creating Domains

The maximum number of domains that you can create is specified by your Rational Test Control Panel licence. Therefore, Rational Test Control Panel will not allow you to create additional domains that exceed that limit irrespective of the method that you use to create them.

A domain can be created by using any of the following methods:

- An initial domain can be (optionally) created during installation of Rational Test Control Panel (for information about this, refer to *IBM Rational Test Control Panel Installation Guide*).
- Manually by using the Rational Test Control Panel application (if you are a Rational Test Control Panel administrator).
- Manually by using the Rational Integration Tester application. (In Rational Integration Tester, whenever you are asked to select a domain, you have option to create a new domain if you license enables you to create additional domains.)
- When a Rational Integration Tester Proxy registers with a specific Rational Test Control Panel instance using a domain that does not already exist in that instance.

The following sections describe how to use Rational Test Control Panel and Rational Integration Tester to create domains.

---

### 4.2.1 Rational Test Control Panel Method

To use Rational Test Control Panel to create a domain:

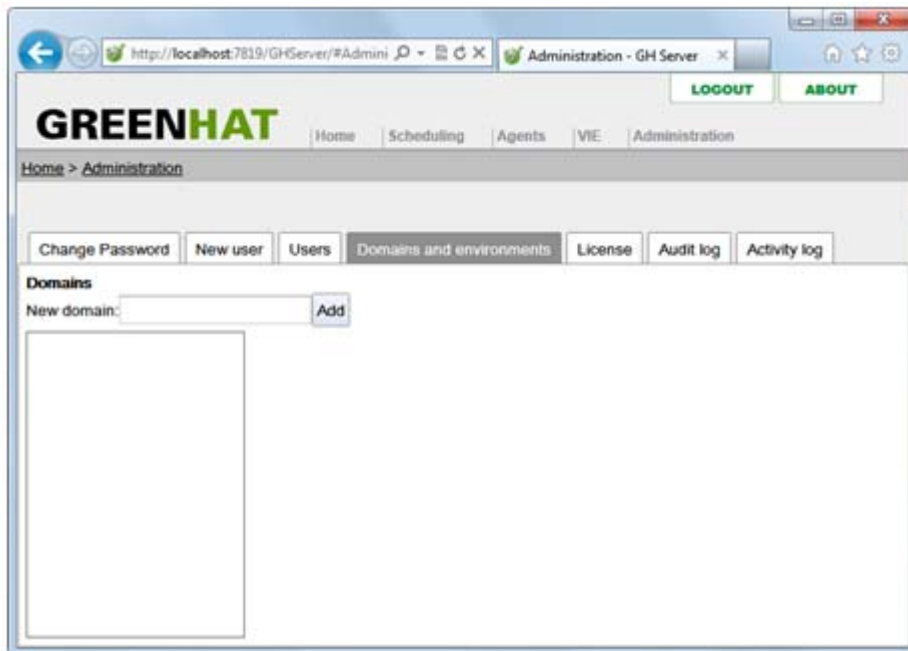
1. Log into Rational Test Control Panel.
2. Click the **Administration** navigation link.

Alternatively, click the **Administration** icon on the **Home** page.

The **Administration** page is displayed.

3. Click the **Domains and environments** tab.

The **Domains and environments** tab is displayed.

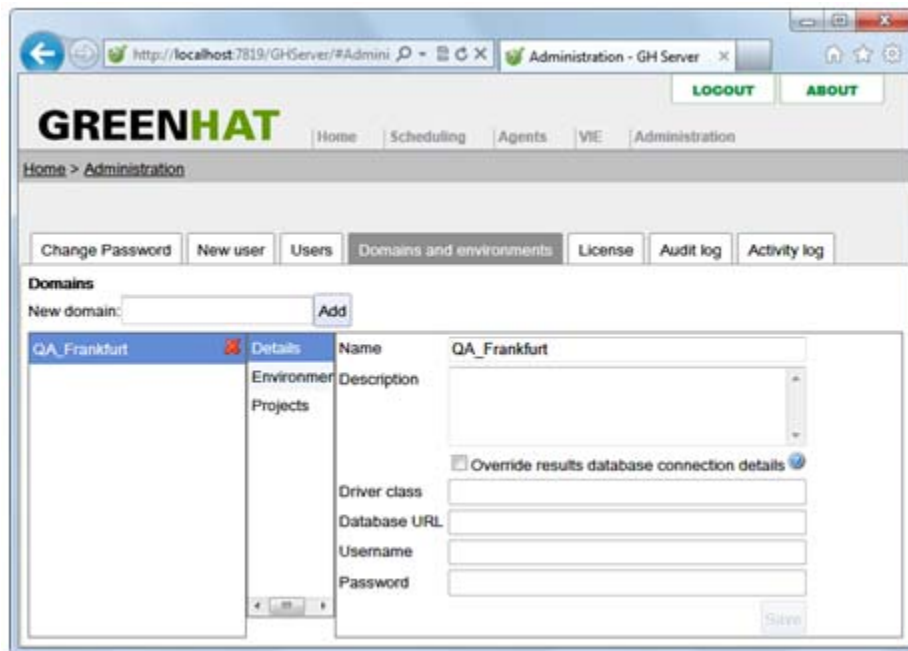


4. In the **New domain** field, enter the name of the new domain.
5. Click **Add**.

The new domain is created.

---

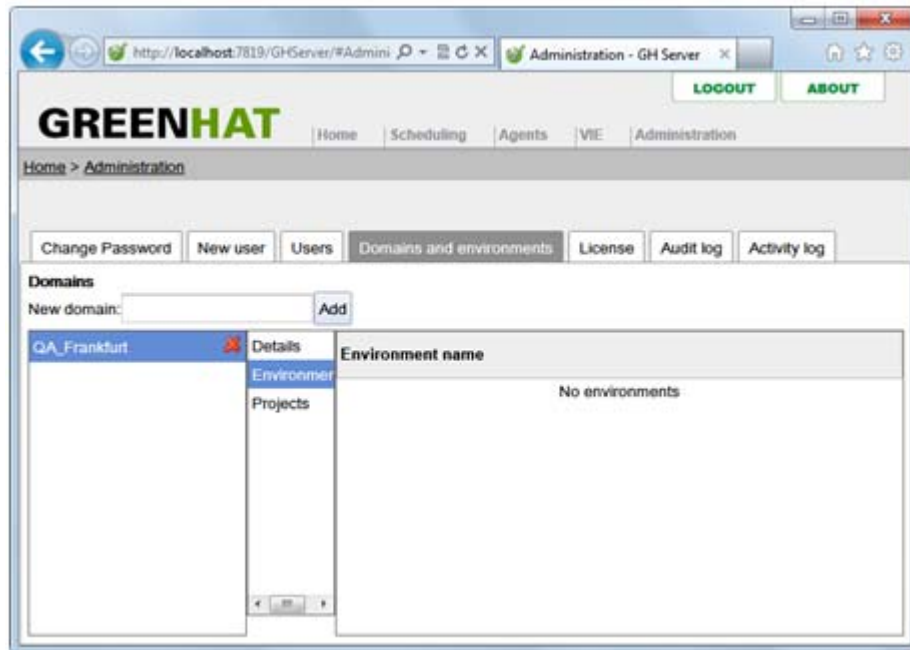
The domain is added to the list of domains on the **Domains and environments** tab and a **Details** page is displayed on the tab to enable you to enter additional information about the new domain (if you wish).





---

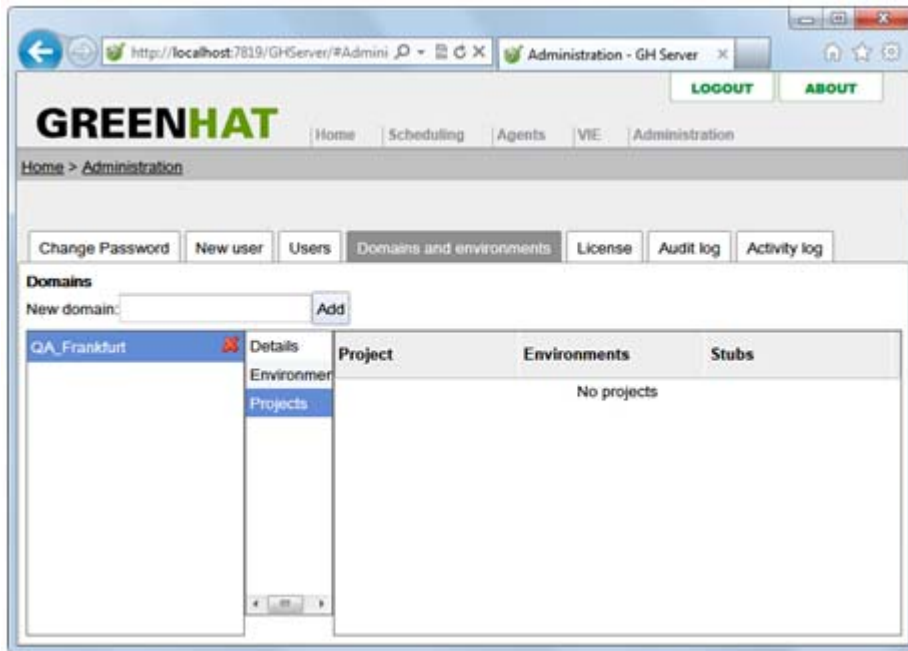
Clicking **Environments** displays the **Environments** page, which enables you to view a listing of the environments (if any) in the currently selected domain.



**NOTE:** You cannot use the **Environments** page to create an environment for a new domain or to associate an existing environment with a new domain because it is read-only. Instead, environments are created automatically when stubs are published from Rational Test Virtualization Server or when a Rational Integration Tester Proxy or Agent registers with Rational Test Control Panel specifying an environment name.

---

Clicking **Projects** displays the **Projects** page, which enables you to view a listing of the Rational Integration Tester projects (if any) where any stubs in the currently selected domain have been published.



6. **Optional:** In the **Description** field on the **Details** page, enter a description for the new domain.

**NOTE:** The contents of the **Description** field are viewable only within Rational Test Control Panel. The contents of the field are not used by, or viewable in, Rational Integration Tester.

**NOTE:** You can also specify a results database for the new domain. (For information about this, refer to [Modifying Rational Test Virtualization Server Project Results Database Settings](#).)

---

### 4.2.2 Rational Integration Tester Method

**NOTE:** This method of creating a domain can be executed while using Rational Integration Tester's Create New Project wizard or after a project has been created.

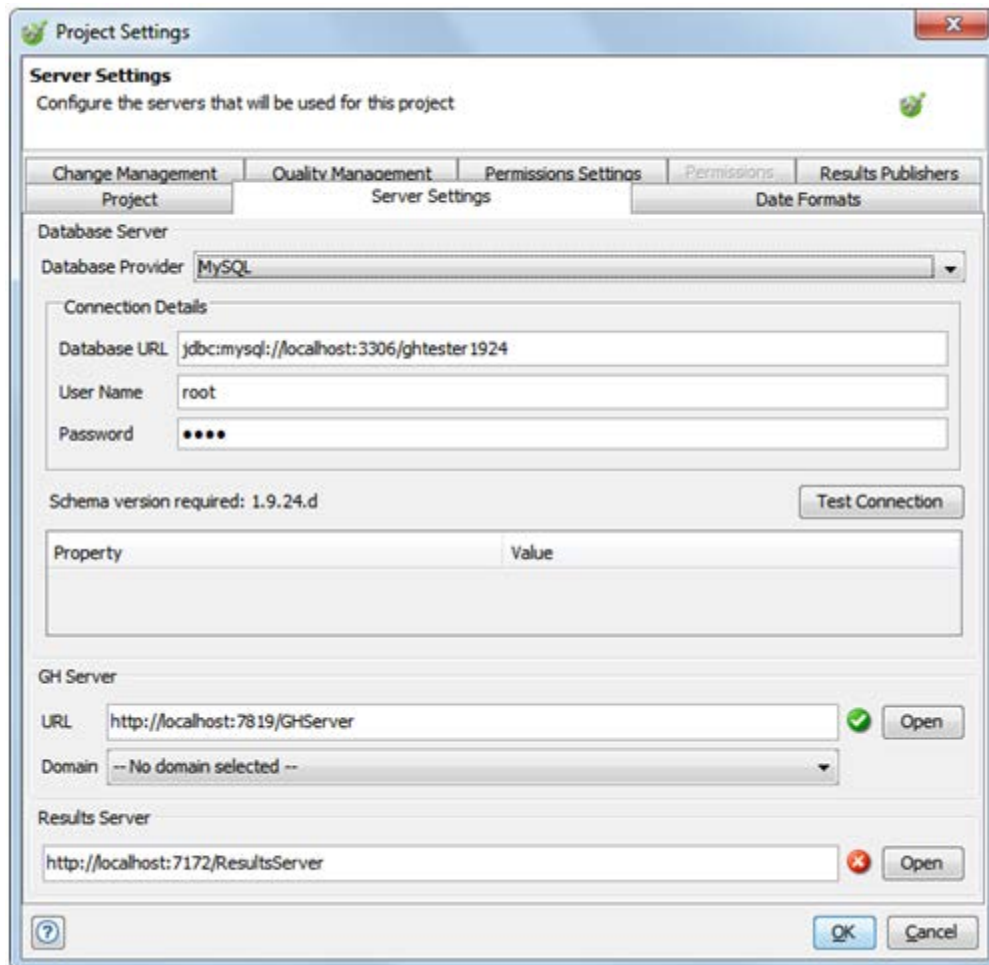
To use Rational Integration Tester to create a domain:

1. Log into the Rational Integration Tester application.
2. On the menu bar, click **Project > Project Settings**.

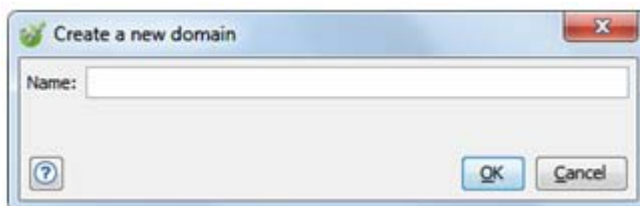
The Project Settings dialog box is displayed.

3. Click the **Server Settings** tab.

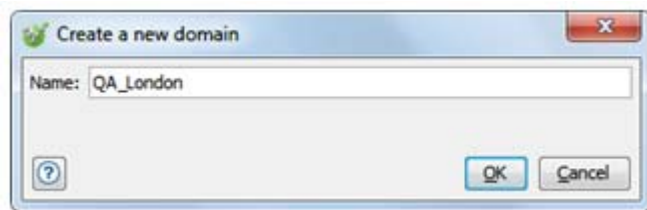
The **Server Settings** tab is displayed. (This tab is also displayed in the Create New Project wizard.)



4. Under **Rational Test Control Panel**, click **Create new domain** in the **Domain** list.  
The Create a new domain dialog box is displayed.



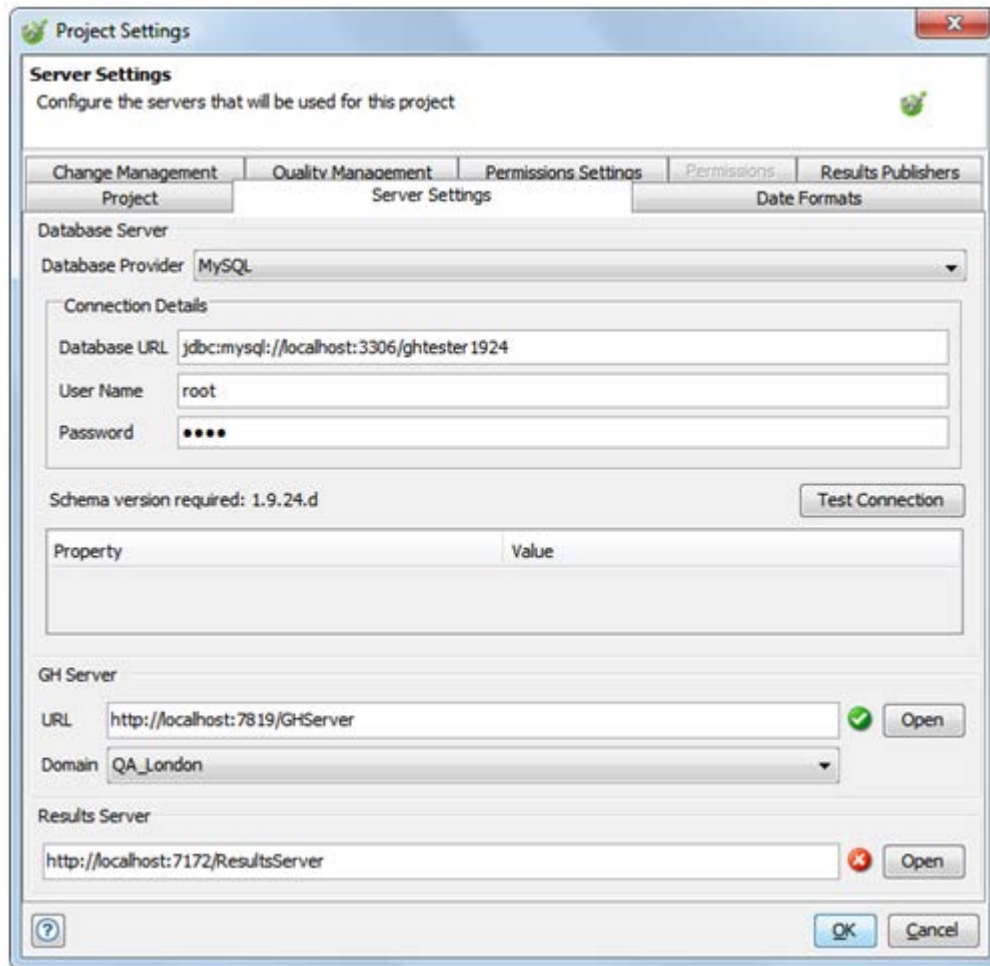
5. In the **Name** field, enter the name of the new domain.



6. Click **OK**.

---

The Create a new domain dialog box is closed and the new domain is selected in the **Domain** list.



If you want to add more details about the new domain, you will have to use Rational Test Control Panel (for information about this, refer to [Rational Test Control Panel Method](#)).

**NOTE:** If you are using the Rational Test Control Panel instance specified in the **URL** field on the **Server Settings** tab, the new domain will be not displayed on the **Domains and environments** tab on the **Administration** page of the Rational Test Control Panel application until you log out and then log into Rational Test Control Panel again.

---

## 4.3 Modifying Domains

You can modify a domain by renaming it, by modifying the Rational Test Virtualization Server project results database that it uses, and by deleting any stubs within it.

The following sections describe how to complete these tasks.

### 4.3.1 Renaming Domains

To rename a domain:

1. Log into Rational Test Control Panel.
2. Click the **Administration** navigation link.

Alternatively, click the **Administration** icon on the **Home** page.

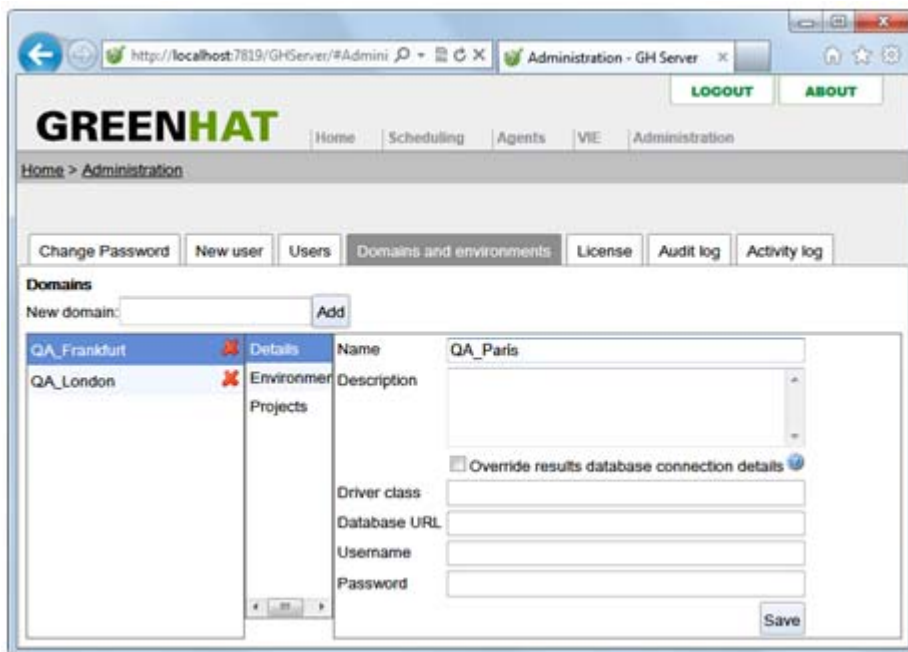
The **Administration** page is displayed.

3. Click the **Domains and environments** tab.

The **Domains and environments** tab is displayed.

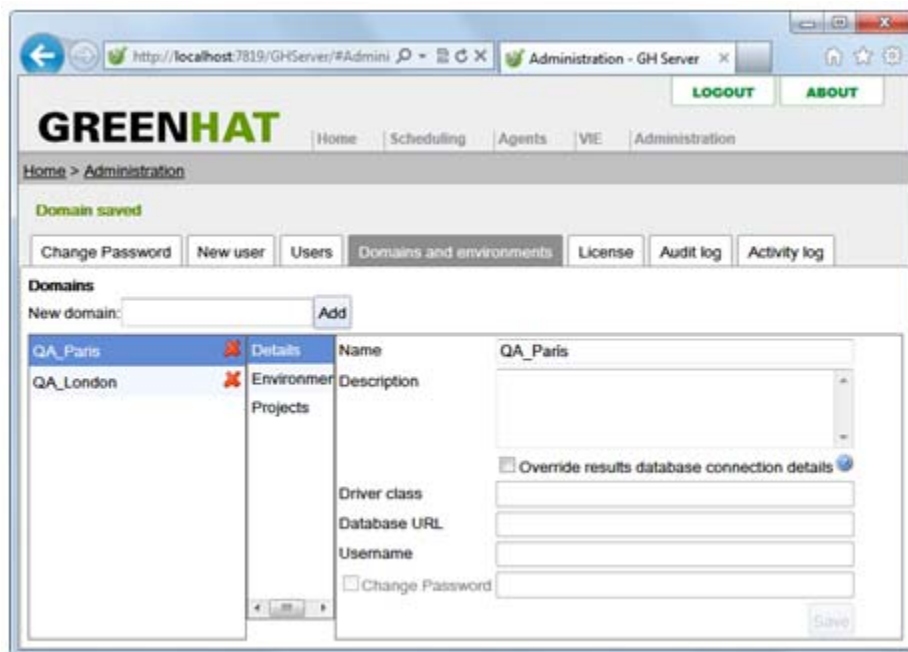
4. In the list of domains on the left side of the **Domains and environments** tab, click the domain that you want to rename.
5. Click **Details** (if necessary) to display the **Details** page.

- 
6. In the **Name** field on **Details** page, edit the name of the selected domain.



7. Click **Save**.

The domain's name is modified. A status message is displayed to confirm this.





---

## 4.3.2 Modifying Rational Test Virtualization Server Project Results Database Settings

Stubs that are run in Rational Test Virtualization Server can log information to a project results database. (The log level is configurable.) Logging is most useful when stubs are being designed in Rational Integration Tester but it can also be useful after a stub has been published to ensure that it is working correctly.

The following sections discuss why you might want to modify project results database settings and describe how to modify the settings at domain level.

**NOTE:** Project results databases cannot be defined at environment level.

### 4.3.2.1 Reasons for Modifying Database Settings

When a stub is being designed and run within Rational Integration Tester, it will log to Rational Integration Tester's Console output and to the configured project results database. This enables Rational Integration Tester users to use the Results Gallery perspective to analyze the stub's output. If there is no configured project database, the stub's output can be viewed only in Rational Integration Tester's Console output.

When a stub is published, the project results database settings will be published with it. The stub's initial log level in Rational Test Virtualization Server is selected in Rational Integration Tester at the point when it is published but this can be overridden when the stub is started.

If the stub is configured to log, in the absence of any other configuration values, the stub will attempt to connect back to the project results database defined in the Rational Integration Tester/Rational Test Virtualization Server project if such a database was defined.

Whether a project database exists depends on the stub's desired behavior. A project results database may not have been defined, so stub logs will be available only on the Console output of the agent(s) where they are running.

Alternatively, a project results database may have been defined but it may be running on a computer that cannot be accessed by Rational Test Virtualization Server. In addition, if multiple stubs are published to a single domain with different project results databases, the logs will be split across those databases.

Therefore, it is possible to configure a single project results database to for all stubs within a domain. After configuring such a database, all stubs running in that domain will use that database for their logs.

---

#### 4.3.2.2 Modifying Database Settings

Only a Rational Test Control Panel administrator can set up and modify Rational Test Virtualization Server project results databases.

To modify Rational Test Virtualization Server project results database settings:

1. Log into Rational Test Control Panel.
2. Click the **Administration** navigation link.

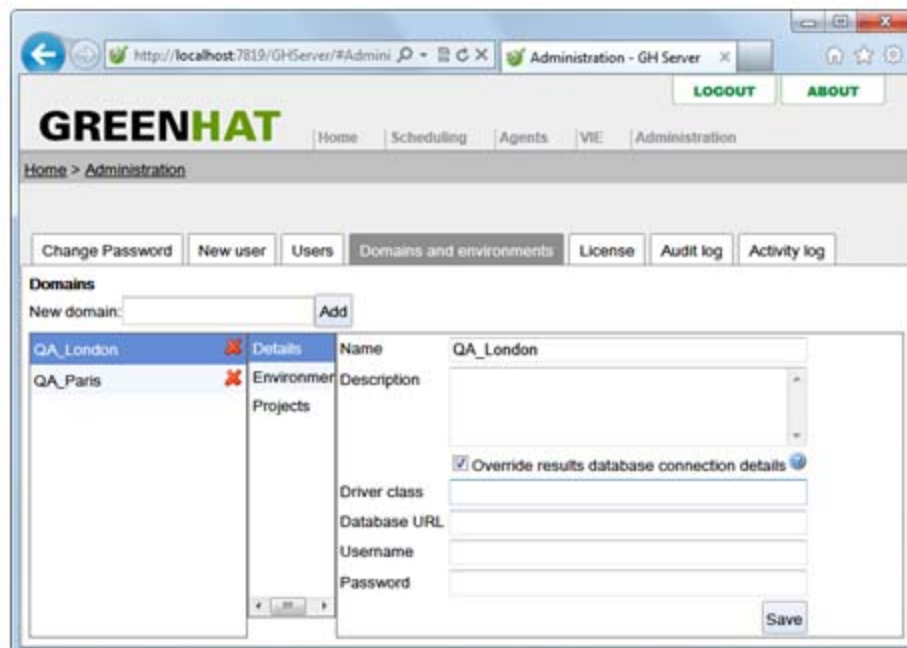
Alternatively, click the **Administration** icon on the **Home** page.

The **Administration** page is displayed.

3. Click the **Domains and environments** tab.

The **Domains and environments** tab is displayed.

4. In the list of domains on the left side of the **Domains and environments** tab, click the domain that you want to modify.
5. Click **Details** (if necessary) to display the **Details** page.
6. On the **Details** page, select the **Override results database connection details** check box.



The fields under the **Description** field become available for editing.

- 
7. In the **Driver class** field, enter the name of the JDBC driver that is to be used (if overriding the existing results database connection).

The following table shows example driver class names.

DBMS	Driver Class Example
Microsoft SQL Server	<code>com.microsoft.sqlserver.jdbc.SQLServerDriver</code>
MySQL	<code>com.mysql.jdbc.Driver</code> <b>NOTE:</b> If you want to use MySQL with Rational Test Control Panel, you will need to install a MySQL driver. (For information about this refer to <i>IBM Rational Test Control Panel Installation Guide</i> .)
Oracle	<code>oracle.jdbc.driver.OracleDriver</code> (thin)

8. In the **Database URL** field, enter the URL of the database that is to be used (if overriding the existing results database connection).

The following table shows example URL formats.

DBMS	Database URL Format
Microsoft SQL Server	<code>jdbc:sqlserver://&lt;Server Name&lt;\Instance Name&gt;&lt;:Port Number&gt;&lt;;Property=Value&lt;;Property=Value&gt;&gt;</code>
MySQL	<code>jdbc:mysql://Server Name&lt;\Instance Name&gt;&lt;:Port Number&gt;&lt;;Property=Value&lt;;Property=Value&gt;&gt;</code>
Oracle	<code>jdbc:oracle:thin://Server Name&lt;\Instance Name&gt;&lt;:Port Number&gt;&lt;;Property=Value&lt;;Property=Value&gt;&gt;</code>

9. In the **Username** field, enter the new user name that is to be used for connecting to the results database that is to be used.
10. In the **Password** field, enter the new password that is to be used for connecting to the results database that is to be used.
11. Click **Save**.

The new domain's details are updated. These settings will be used for all stubs run in this domain regardless of environment.

**NOTE:** Any changes to project results database settings will affect only stubs that are started **after** the changes have been made.

---

**NOTE:** Project results databases cannot be defined at environment level. To mitigate this, you can use different domains for each environment, or you can define the project results database before publishing the stubs into each environment and ensure that you do not override the settings for the domain in Rational Test Control Panel. However, this change will affect only stubs that are started after the change has been made.

### 4.3.3 Deleting Stubs

Only a Rational Test Control Panel administrator can delete stubs from Rational Test Control Panel after they have been published.

Deleting a domain also deletes **all** stubs that were published to that domain (for information about deleting domains, refer to [Deleting Domains](#)). You can also delete individual stubs that have been published to a domain.

To delete a stub:

1. Log into Rational Test Control Panel.
2. Click the **Administration** navigation link.

Alternatively, click the **Administration** icon on the **Home** page.

The **Administration** page is displayed.

3. Click the **Domains and environments** tab.

The **Domains and environments** tab is displayed.

4. In the list of domains on the left side of the **Domains and environments** tab, click the domain where the stub (that you want to delete) is published.
5. Click **Projects** to display the **Projects** page.
6. Click the red **X** button (✖) next to the stub that you want to delete.

A confirmation prompt is displayed.

7. Click **OK**.

The selected stub is deleted. A status message is displayed to confirm this.

---

## 4.4 Deleting Domains

**NOTE:** You **cannot** delete a domain if there are stubs running in that domain, or if a running Rational Integration Tester Agent or Proxy is registered specifically for that domain.

To delete a domain:

1. Log into Rational Test Control Panel.
2. Click the **Administration** navigation link.

Alternatively, click the **Administration** icon on the **Home** page.

The **Administration** page is displayed.

3. Click the **Domains and environments** tab.

The **Domains and environments** tab is displayed.

4. In the list of domains on the left side of the **Domains and environments** tab, click the red **X** button (✖) next to the domain that you want to delete.

A confirmation prompt is displayed.



5. Click **OK**.

The selected domain is deleted.

**NOTE:** **All** stubs that were published to the deleted domain are also deleted. (For more information about deleting individual stubs, refer to [Deleting Stubs](#).)

# Administering Proxies

## Contents

### Viewing Proxies

### Modifying Log Levels

This chapter describes how to use Rational Test Control Panel to view and control any of the proxies in the Rational Integration Tester Platform Pack.

For background information about using the proxies for recording, refer to *IBM Rational Integration Tester Reference Guide*. For background information about using the proxies for stubbing, refer to *IBM Rational Test Virtualization Server Reference Guide*.

For information about installing the proxies, refer to *IBM Rational Integration Tester Platform Pack Installation Guide*.

---

## 5.1 Viewing Proxies

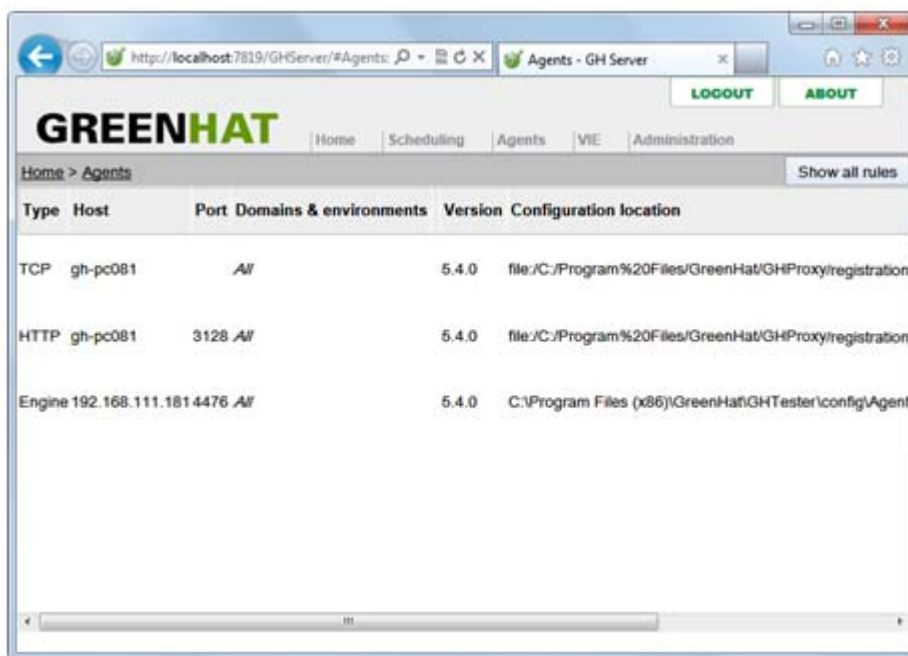
To view **all** Rational Integration Tester proxies that are registered with the current Rational Test Control Panel instance and that are currently running:

1. Log into Rational Test Control Panel.


Rational Test Control Panel's application window is displayed.

2. Click the **Agents** icon or navigation link.

The **Agents** page is displayed.



Any Rational Integration Tester proxies registered with the current Rational Test Control Panel instance that are currently running are displayed. Details displayed include proxy-type, host name, port number, domain and environment, software version number, configuration file location, log level, current status, and date and time of last poll.

3. Click the **magnifying glass** button() of the relevant proxy.

The Proxy routing rules pop-up window is displayed.

Details about any routing rules defined for the proxy are displayed on the pop-up window.

---

Clicking **Show all rules** splits the **Agents** page and display recording rules that have been set up from Rational Integration Tester's Recording Studio **or** routing rules that are set up when you start a stub.

4. Click **Close** to close the Proxy routing rules pop-up window.

**NOTE:** Proxy console output is not viewable in Rational Test Control Panel, so you must view the console output of a proxy on the computer where it is running.



---

## 5.2 Modifying Log Levels

The log level of a Rational Integration Tester Proxy refers to the default level of events that the proxy must log to a Rational Test Control Panel instance.

The default log level of any Rational Integration Tester Proxy is **Info**. This can be changed during or after the installation of a Rational Integration Tester Proxy (for information about this, refer to *IBM Rational Integration Tester Platform Pack Installation Guide*).

However, you can also change the log level of a proxy at Rational Test Control Panel instance level.

To modify the log level of all Rational Integration Tester proxies that are registered with the current Rational Test Control Panel instance and that are currently running:

1. Log into Rational Test Control Panel.

Rational Test Control Panel's application window is displayed.

2. Click the **Agents** icon or navigation link.

The **Agents** page is displayed.

Any Rational Integration Tester proxies registered with the current Rational Test Control Panel instance that are currently running are displayed.

3. In the **Log level** list of any proxy displayed on the **Agents** page, click any of the following options:

- **Debug**
- **Info** (installation default)
- **Warning**
- **Error**

The log level of the selected proxy is modified for the current Rational Test Control Panel instance.

# Viewing Logs

## **Contents**

**[Viewing Rational Test Control Panel's Audit Log](#)**

**[Viewing Rational Test Control Panel's Activity Log](#)**

This chapter describe how view Rational Test Control Panel's audit and activity logs.

---

## 6.1 Viewing Rational Test Control Panel's Audit Log

Rational Test Control Panel audits significant events. Audit entries are saved between Rational Test Control Panel restarts, and they are preserved during upgrade installations of Rational Test Control Panel but only if Rational Test Control Panel's workspace is preserved. (For information about upgrading Rational Test Control Panel installations, refer to *IBM Rational Test Control Panel Installation Guide*.)

When the **Audit log** page is first displayed, all audit entries from the previous 48 hours are shown, starting with the oldest.

**NOTE:** Only action-types and user names with associated audit events are displayed.

To view Rational Test Control Panel's audit log:

1. Log into Rational Test Control Panel.
2. Click the **Administration** navigation link.

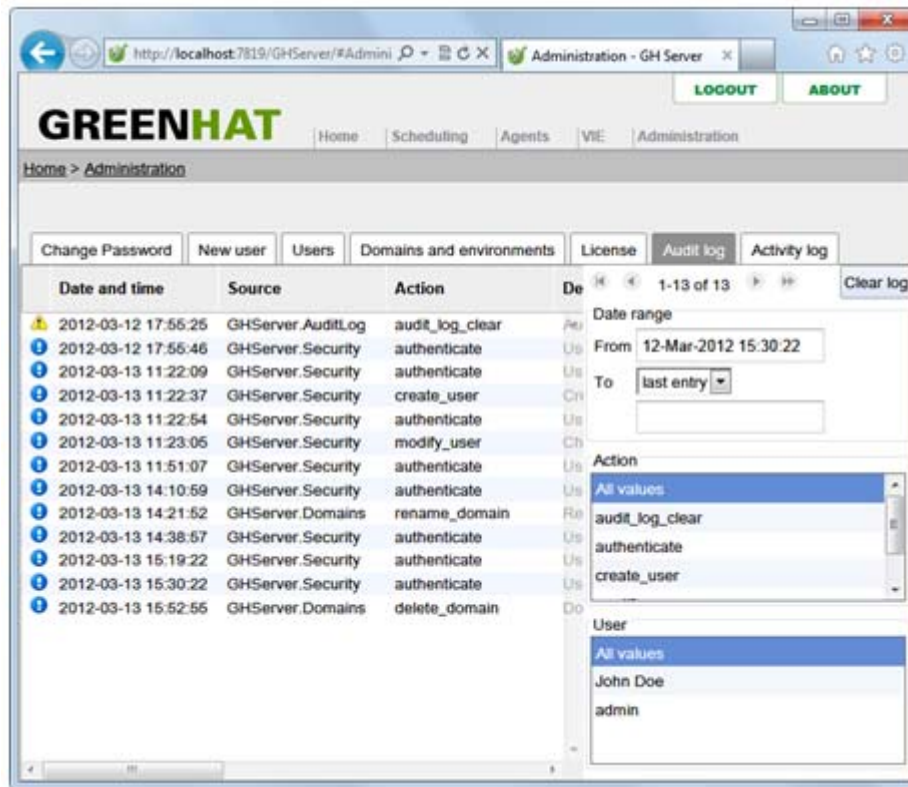
Alternatively, click the **Administration** icon on the **Home** page.

The **Administration** page is displayed.

3. Click the **Audit log** tab.

---

The **Audit log** tab is displayed.



The columns on the tab are as follows:

- Date and time
- Source
- Action
- Description
- User
- Domain
- Environment

---

The following table describes how use the controls on the tab.

To...	Do this...
View individual pages of log entries.	Click the <b>Back</b> and <b>Forward</b> buttons above <b>Date range</b> to view the oldest and newest entries in large audit logs.
Filter the display of log entries by date.	<ol style="list-style-type: none"><li>1. Under <b>Date range</b>, click the <b>From</b> field to display a calendar pop-up window that enables you to select a start date.</li><li>2. In the <b>To</b> list, click <b>last entry:</b> to filter the list up to the most recent log entry, or click <b>date:</b> to specify a specific end date.</li><li>3. If you clicked <b>date:</b> in the <b>To</b> list, click the field under <b>To</b> to display a calendar pop-up window that enables you to select a an end date.</li></ol>
Filter the display of log entries by action-type.	<p>Under <b>Action</b>, click <b>All values</b> to display all log entries for all action-types, or click an individual action-type to display log entries for only that action-type.</p> <p><b>NOTE:</b> To select more than one action-type, hold CTRL or SHIFT while clicking each user name.</p>
Filter the display of log entries by user name.	<p>Under <b>User</b>, click <b>All values</b> to display log entries for all users, or click an individual user name to display log entries for only that user.</p> <p><b>NOTE:</b> To select more than one user name, hold CTRL or SHIFT while clicking each user name.</p>
Clear all entries from the audit log permanently.	<ol style="list-style-type: none"><li>1. Click <b>Clear log</b>. (A confirmation prompt is displayed.)</li><li>2. Click <b>OK</b>.</li></ol>

---

## 6.2 Viewing Rational Test Control Panel's Activity Log

When using Rational Test Virtualization Server, Rational Test Control Panel is a central point of co-ordination among agents and proxies when stubs are running. To facilitate management of the individual components of Rational Test Virtualization Server, Rational Test Control Panel maintains an activity log that is a temporary view (unlike Rational Test Control Panel's audit log) of activity among the various components of Rational Test Virtualization Server.

Rational Test Control Panel's activity log is intended primarily for Rational Test Control Panel administrators and it can provide a useful means of monitoring a Rational Test Virtualization Server environment.

The log is stored for a configurable number of days (default value: 3 days) and it can be exported to a comma-separated value (CSV) file, which can be shared with anyone who is not a Rational Test Control Panel user but who may be affected by, or be involved in supporting, Rational Test Control Panel or Rational Test Virtualization Server.

When the **Activity log** page is first displayed, the most recent events are displayed first.

To view Rational Test Control Panel's activity log:

1. Log into Rational Test Control Panel.
2. Click the **Administration** navigation link.

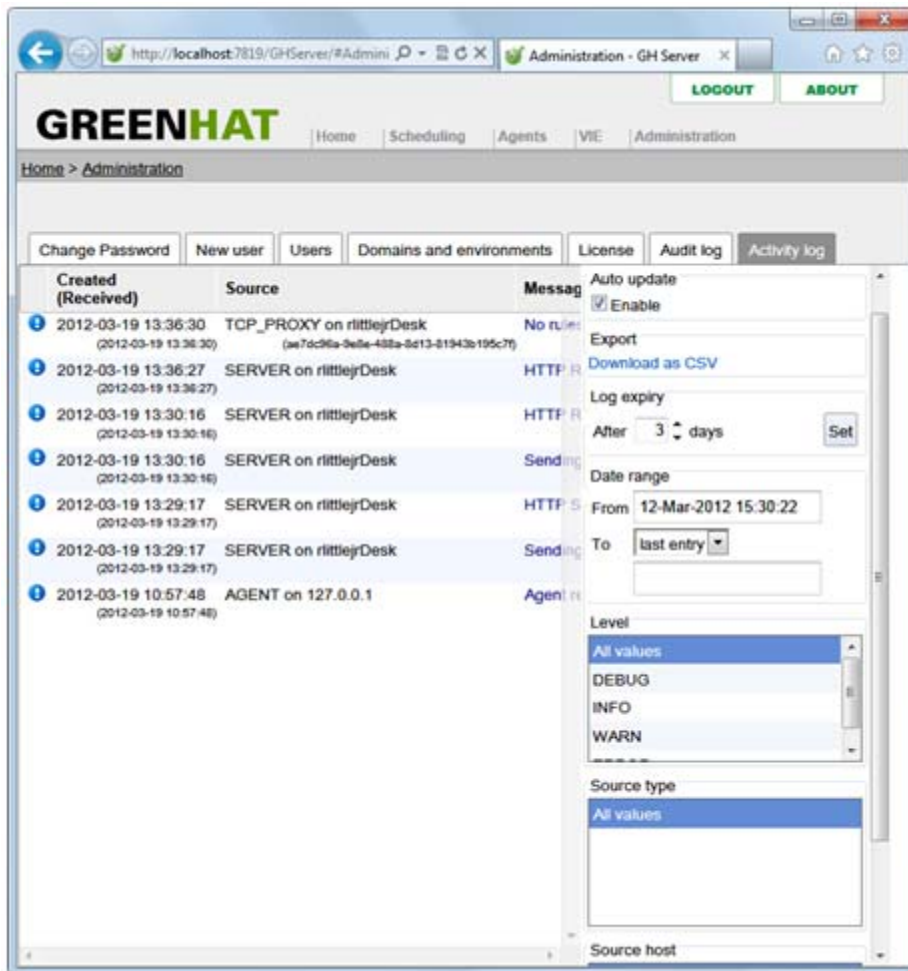
Alternatively, click the **Administration** icon on the **Home** page.

The **Administration** page is displayed.

3. Click the **Activity log** tab.

---

The **Activity log** tab is displayed.



The columns on the tab are as follows:

- Created (Received)
- Source
- Message

---

The following table describes how use the controls on the tab.

To...	Do this...
View individual pages of log entries.	Click the <b>Back</b> and <b>Forward</b> buttons above <b>Auto update</b> to view the oldest and newest entries in large activity logs.
Enable/disable automatic updates of the log.	Select or clear the <b>Auto update</b> check box as desired.  <b>NOTE:</b> If you want analyze individual events in a large activity log, disabling automatic updates may be helpful. To refresh the activity log page after automatic updates have been disabled, re-enable automatic updates by selecting the <b>Auto update</b> check box.
Save the currently displayed activity log (for archiving and/or sharing purposes).	<ol style="list-style-type: none"><li>1. Under <b>Export</b>, Click <b>Download as CSV</b>. Your web browser will prompt you to open or save the log export file.</li><li>2. Click <b>Open</b>, <b>Save</b> (or <b>Save as</b>, or <b>Save as and open</b>), or <b>Cancel</b> (whichever is applicable).</li></ol>
Specify the number of days that activity log entries are stored before they are purged from Rational Test Control Panel.	<ol style="list-style-type: none"><li>1. Under <b>Log expiry</b>, enter or select the number of days in the <b>After</b> field.</li><li>2. Click <b>Set</b>.</li></ol> <b>NOTE:</b> After clicking <b>Set</b> , any entries older than the new setting will be purged immediately.
Filter the display of log entries by date.	<ol style="list-style-type: none"><li>1. Under <b>Date range</b>, click the <b>From</b> field to display a calendar pop-up window that enables you to select a start date.</li><li>2. In the <b>To</b> list, click <b>last entry</b>: to filter the list up to the most recent log entry, or click <b>date</b>: to specify a specific end date.</li><li>3. If you clicked <b>date</b>: in the <b>To</b> list, click the field under <b>To</b> to o display a calendar pop-up window that enables you to select a an end date.</li></ol>
Filter the display of log entries by log level.	Under <b>Level</b> , click <b>All values</b> to display all log entries for all log levels, or click an individual log level to display log entries for only that log level.  <b>NOTE:</b> To select more than one log level, hold CTRL or SHIFT while clicking each log level.
Filter the display of log entries by log source-type.	Under <b>Source type</b> , click <b>All values</b> to display all log entries for all log source-types, or click an individual log source-type to display log entries for only that log source-type.  <b>NOTE:</b> To select more than one log source-type, hold CTRL or SHIFT while clicking each source-type.  <b>NOTE:</b> If an expected type is not displayed under <b>Source type</b> , there are no log entries of that type.



---

---

To...	Do this...
Filter the display of log entries by log source host.	<p>Under <b>Source host</b>, click <b>All values</b> to display all log entries for all log source hosts, or click an individual log source host to display log entries for only that log source host.</p> <p><b>NOTE:</b> To select more than one log source host, hold CTRL or SHIFT while clicking each source host.</p> <p><b>NOTE:</b> If an expected host is not displayed under <b>Source host</b>, there are no log entries involving that host.</p>

---

# Troubleshooting

## **Contents**

### **Resolving Apache Tomcat Server Problems**

This chapter provides troubleshooting information about Rational Test Control Panel.

---

## 7.1 Resolving Apache Tomcat Server Problems

If you are trying to diagnose the causes of any startup or other problems with the Apache Tomcat server, or if you are investigating unrecognized registration or other messages from agents or proxies, analyze the following files in *<Rational Test Control Panel Installation Directory>\logs* on the computer where (a specific instance of) Rational Test Control Panel is installed:

- `catalina.<YYYY-MM-DD>.log`
- `localhost.<YYYY-MM-DD>.log`

---

# Glossary

The following table below lists some of the key terms used in this document, and provides a description of each.

Term	Description
Host	The computer on which a software process runs.
Server	A host computer on a network shared by more than one user.

---

# Notices

This information was developed for products and services offered in the U.S.A.

IBM may not offer the products, services, or features discussed in this document in other countries. Consult your local IBM representative for information on the products and services currently available in your area. Any reference to an IBM product, program, or service is not intended to state or imply that only that IBM product, program, or service may be used. Any functionally equivalent product, program, or service that does not infringe any IBM intellectual property right may be used instead. However, it is the user's responsibility to evaluate and verify the operation of any non-IBM product, program, or service.

IBM may have patents or pending patent applications covering subject matter described in this document. The furnishing of this document does not grant you any license to these patents. You can send license inquiries, in writing, to:

IBM Director of Licensing  
IBM Corporation  
North Castle Drive  
Armonk, NY 10504-1785  
U.S.A.

For license inquiries regarding double-byte (DBCS) information, contact the IBM Intellectual Property Department in your country or send inquiries, in writing, to:

Intellectual Property Licensing  
Legal and Intellectual Property Law  
IBM Japan, Ltd.  
1623-14, Shimotsuruma, Yamato-shi  
Kanagawa 242-8502 Japan

**The following paragraph does not apply to the United Kingdom or any other country where such provisions are inconsistent with local law:**

INTERNATIONAL BUSINESS MACHINES CORPORATION PROVIDES THIS PUBLICATION "AS IS" WITHOUT WARRANTY OF ANY KIND, EITHER EXPRESS OR IMPLIED, INCLUDING, BUT NOT LIMITED TO, THE IMPLIED WARRANTIES OF NON-INFRINGEMENT,

---

MERCHANTABILITY OR FITNESS FOR A PARTICULAR PURPOSE. Some states do not allow disclaimer of express or implied warranties in certain transactions, therefore, this statement may not apply to you.

This information could include technical inaccuracies or typographical errors. Changes are periodically made to the information herein; these changes will be incorporated in new editions of the publication. IBM may make improvements and/or changes in the product(s) and/or the program(s) described in this publication at any time without notice.

IBM may use or distribute any of the information you supply in any way it believes appropriate without incurring any obligation to you.

Licensees of this program who wish to have information about it for the purpose of enabling: (i) the exchange of information between independently created programs and other programs (including this one) and (ii) the mutual use of the information which has been exchanged, should contact:

IBM United Kingdom Limited  
Intellectual Property Law  
Hursley Park  
Winchester  
SO21 2JN  
Hampshire  
United Kingdom

Such information may be available, subject to appropriate terms and conditions, including in some cases, payment of a fee.

The licensed program described in this document and all licensed material available for it are provided by IBM under terms of the IBM Customer Agreement, IBM International Program License Agreement or any equivalent agreement between us.

Any performance data contained herein was determined in a controlled environment. Therefore, the results obtained in other operating environments may vary significantly. Some measurements may have been made on development-level systems and there is no guarantee that these measurements will be the same on generally available systems. Furthermore, some measurements may have been estimated through extrapolation. Actual results may vary. Users of this document should verify the applicable data for their specific environment.

Information concerning non-IBM products was obtained from the suppliers of those products, their published announcements or other publicly available sources. IBM has not tested those products and cannot confirm the accuracy of performance, compatibility or any other claims related to non-IBM products. Questions on the

---

capabilities of non-IBM products should be addressed to the suppliers of those products.

All statements regarding IBM's future direction or intent are subject to change or withdrawal without notice, and represent goals and objectives only.

This information contains examples of data and reports used in daily business operations. To illustrate them as completely as possible, the examples include the names of individuals, companies, brands, and products. All of these names are fictitious and any similarity to the names and addresses used by an actual business enterprise is entirely coincidental.

#### COPYRIGHT LICENSE:

This information contains sample application programs in source language, which illustrate programming techniques on various operating platforms. You may copy, modify, and distribute these sample programs in any form without payment to IBM, for the purposes of developing, using, marketing or distributing application programs conforming to the application programming interface for the operating platform for which the sample programs are written. These examples have not been thoroughly tested under all conditions. IBM, therefore, cannot guarantee or imply reliability, serviceability, or function of these programs.

Each copy or any portion of these sample programs or any derivative work, must include a copyright notice as follows:

© (your company name) (year). Portions of this code are derived from IBM Corp. Sample Programs. © Copyright IBM Corporation 2001, 2012.

If you are viewing this information softcopy, the photographs and color illustrations may not appear.

---

## Trademarks and service marks

IBM, the IBM logo, and ibm.com are trademarks or registered trademarks of International Business Machines Corp., registered in many jurisdictions worldwide. Other product and service names might be trademarks of IBM or other companies. A current list of IBM trademarks is available on the Web at “Copyright and trademark information” at [www.ibm.com/legal/copytrade.shtml](http://www.ibm.com/legal/copytrade.shtml).

Microsoft and Windows are trademarks of Microsoft Corporation in the United States, other countries, or both.

UNIX is a registered trademark of The Open Group in the United States and other countries.



