

IBM Rational Programming Patterns
Version 9.0.1

Installation Guide



IBM Rational Programming Patterns
Version 9.0.1

Installation Guide



Note

Before using this information, be sure to read the general information under “Notices” on page 41.

Fifth edition (December, 2013)

This edition applies to IBM Rational Programming Patterns V9.0.1 (program number 5725--H03) and to all subsequent releases and modifications until otherwise indicated in new editions.

Order publications by phone or fax. IBM Software Manufacturing Solutions takes publication orders between 8:30 a.m. and 7:00 p.m. eastern standard time (EST). The phone number is (800) 879-2755. The fax number is (800) 445-9269. Faxes should be sent Attn: Publications, 3rd floor.

You can also order publications through your IBM representative or the IBM branch office serving your locality. Publications are not stocked at the address below.

IBM welcomes your comments. You can send your comments by mail to the following address:

IBM Corporation
Attn: Information Development Department 53NA
Building 501 P.O. Box 12195
Research Triangle Park NC 27709-2195.
USA

When you send information to IBM, you grant IBM a nonexclusive right to use or distribute the information in any way it believes appropriate without incurring any obligation to you.

Note to U.S. Government Users Restricted Rights - Use, duplication or disclosure restricted by GSA ADP Schedule Contract with IBM Corp.

© Copyright IBM Corporation 2010, 2013.

US Government Users Restricted Rights – Use, duplication or disclosure restricted by GSA ADP Schedule Contract with IBM Corp.

Contents

Chapter 1. Introduction	1	Installing the Rational Programming Patterns server	14
		Installing the server on Windows, AIX, or Linux	15
		Installing the server on z/OS	16
Chapter 2. Rational Programming Patterns installation requirements	3	Chapter 6. Post-installation tasks	17
VisualAge Pacbase installation requirements	3	Integrating with Rational Team Concert	17
Rational Programming Patterns client installation requirements	3	Creating a Rational Programming Patterns V9.0.1 workspace	22
Installation requirements for a System z environment	3	Accessing the help	23
Installation requirements for a System p environment	3	Managing licenses	23
Installation requirements for the Rational Programming Patterns server	4	License types	24
User privileges requirements	4	License enablement	24
		Importing a product activation kit	25
		Activating floating licenses	25
		Purchasing licenses	26
		Installing and configuring licenses in silent mode	27
		Viewing license information	27
Chapter 3. Planning to install Rational Programming Patterns	5	Chapter 7. Starting Rational Programming Patterns	29
IBM Installation Manager	5		
Upgrade and coexistence considerations	6	Chapter 8. Testing the installation	31
General considerations	6		
Considerations related to Rational Programming Patterns	7	Chapter 9. Updating Rational Programming Patterns	33
Installation methods for Rational Programming Patterns	7	Updating from the IBM update server	33
Installing silently	8	Updating from a compressed file	34
Copying the installation image to a shared drive or server.	9	Updating the server on z/OS	35
Chapter 4. Installing the required products	11	Chapter 10. Uninstalling Rational Programming Patterns	37
Installing VisualAge Pacbase.	11		
Installing the required products for the client part	11	Chapter 11. Appendix: IBM Packaging Utility	39
Installing for a System z client environment	11		
Installing for a System p environment	11	Notices	41
Installing the product required for the server part	12		
Chapter 5. Installing Rational Programming Patterns	13		
Installing the Rational Programming Patterns client	13		

Chapter 1. Introduction

The installation instructions guide you in installing, updating, and uninstalling Rational® Programming Patterns V9.0.1.

Rational Programming Patterns is a set of development tools that are built on the Eclipse platform (www.eclipse.org). You can think of the Eclipse platform as the framework and Rational Programming Patterns and other bundled offerings as the tool contributors.

Rational Programming Patterns is installed on the IBM® Rational Software Delivery Platform. This platform is a common development environment that contains the development workbench and other software components that are shared by multiple products.

Rational Programming Patterns is constituted of the following two components:

- A client integrated with different products, depending on your environment: Rational Developer for System z® V9.0 or Rational Developer for AIX® and Linux V9.0. The client is also always integrated with Rational Team Concert™ V4.0.3.
- A server integrated with Jazz™ Team Server V4.0.3.

Note: All the other versions of these products that are available when this version of Rational Programming Patterns is released are also compatible.

You can install the Rational Programming Patterns V9.0.1 by updating the V9.0 or V9.0.0.1 version. You can also carry out a full installation of the new version.

Chapter 2. Rational Programming Patterns installation requirements

VisualAge Pacbase installation requirements

To migrate the data that is stored in VisualAge® Pacbase databases, you must verify that the workstation on which VisualAge Pacbase 3.5 Y09B will be installed meets the installation requirements.

The installation requirements for the VisualAge Pacbase part are indicated in the VisualAge Pacbase installation guide specific to your platform, in chapter “Prerequisites”.

The VisualAge Pacbase installation guides are shipped with the VisualAge Pacbase product. They are also available on the VisualAge Pacbase documentation site (section **The administrator's documentation**).

Rational Programming Patterns client installation requirements

Installation requirements for a System z environment

To install the Rational Programming Patterns client in a System z environment, you must verify that your workstation meets the minimum hardware and software requirements for installing the client environment: Rational Developer for System z V9.0, Rational Team Concert V4.0.3, and Rational Programming Patterns V9.0.1.

Note: All the other versions of these products that are available when this version of Rational Programming Patterns is released are also compatible.

Verify the prerequisites of each product from the search interface of the Detailed system requirements. In this interface, enter the product name and click the search icon. Select the relevant product in the search results and select the values of the required fields. Then, submit the search.

Installation requirements for a System p environment

To install the Rational Programming Patterns client in a System p® environment, you must verify that your workstation meets the minimum hardware and software requirements for installing the client environment: Rational Developer for AIX and Linux V9.0, Rational Team Concert V4.0.3, and Rational Programming Patterns V9.0.1.

Note: All the other versions of these products that are available when this version of Rational Programming Patterns is released are also compatible.

Verify the prerequisites of each product from the search interface of the Detailed system requirements. In this interface, enter the product name and click the search icon. Select the relevant product in the search results and select the values of the required fields. Then, submit the search.

Installation requirements for the Rational Programming Patterns server

To install the Rational Programming Patterns server, you must verify that your workstation meets the minimum hardware and software requirements for installing Jazz Team Server V4.0.3 and the Rational Programming Patterns server V9.0.1. To use Rational Developer for System z specific functions, you can optionally install the Rational Developer for System z server.

Note: All the other versions of these products that are available when this version of Rational Programming Patterns is released are also compatible.

Verify the prerequisites of each product from the search interface of the Detailed system requirements. In this interface, enter the product name and click the search icon. Select the relevant product in the search results and select the values of the required fields. Then, submit the search.

User privileges requirements

You must have a user ID that meets the following requirements before you can install Rational Programming Patterns:

- Your user ID must not contain double-byte characters.
- To install for all the users of the system, you must have an ID that belongs to the Administrators group. If you do not have Administrator privileges, you can install for the current user only.

Chapter 3. Planning to install Rational Programming Patterns

Read this section before attempting to install any of the product features. Many problems can be avoided by planning and understanding the key aspects of the installation process before actually starting the installation.

IBM Installation Manager

IBM Installation Manager is a program that helps you install the Rational Programming Patterns product package on your workstation. It also helps you update, modify, and uninstall any package that you install. A package can be a product, a group of components, or a single component that is designed for Installation Manager to install.

IBM Installation Manager helps you keep track of what you have installed, determine what is available for you to install, and organize installation directories. It is installed on your system the first time you install a Rational Software Delivery Platform product.

Installing products from their launchpad is recommended because it automatically starts IBM Installation Manager. The necessary repository location information and the packages to be installed are automatically preselected. Moreover if the IBM Installation Manager version is not compatible with the version required to install the new packages, its update is automatically proposed.

IBM Installation Manager includes wizards that make it easy to maintain packages through their lifecycles:

- The **Install** wizard walks you through the installation process. You can install a package by accepting the defaults, or you can change the default settings to customize an installation. Before you install a package, you see a summary of your selections throughout the wizard. Using the wizard, you can install one or more packages at one time.
- The **Update** wizard searches for available updates to packages that you have installed. An update can be a released fix, a new feature, or a new version of the product. Details of the contents of the update are provided in the wizard. You can decide whether to apply an update.
- With the **Modify** wizard, you can change certain elements of a package that you have installed. During the first installation of the package, you select the features to install. If you require other features later, you can use the **Modify** wizard to add the features. You can also remove features.
- The **Manage Licenses** wizard helps you set up the licenses for your packages. Use this wizard to change your trial license to a full license, to set up your servers for floating licenses, and to select the type of license to use for each package.
- The **Roll Back** wizard reverts to a previous version of a package.
- The **Uninstall** wizard removes a package from your computer. You can uninstall more than one package at a time.

For more information, see the Installation Manager information center.

Upgrade and coexistence considerations

Before installing Rational Programming Patterns, you must install other products in the same package group. You must then be aware of the compatibility between the various products to obtain a consistent installation.

Important: You must also ensure that you installed the Pacbase version that corresponds to the Rational Programming Patterns version. A version incompatibility can create errors.

General considerations

Some products are designed to coexist and share function when they are installed in the same package group. A package group is a location where you can install one or more software products or packages. When you install each package, you select whether you want to install the package into an existing package group, or whether you want to create a package. IBM Installation Manager blocks the products that are not designed to share or do not meet version tolerance and other requirements. If you want to install more than one product at a time, the products must be able to share a package group.

When a product is installed, its function is shared with all of the other products in the package group. If you install a development product and a testing product into one package group, when you start either of the products, both the development and testing functionalities are available in your user interface. If you add a product with modeling tools, all of the products in the package group have the development, testing, and modeling functionality available.

Note: If you install several packages at the same time, they are all installed in the same package group.

If you install a development product and later purchase a development product with increased functionality and add that product to the same package group, the additional function is available in both products. If you uninstall the product with the greater functionality, the original product remains.

Note: Each product installed into a unique location can be associated with only one package group. A product must be installed into multiple locations in order to be associated with multiple package groups.

Each package group is assigned a name automatically. However, you choose the installation directory for the package group.

When you create the package group by successfully installing a package, you cannot change the installation directory for the package group. The installation directory contains files and resources specific to the packages installed into that package group. Other resources in the packages that can potentially be shared by other package groups are placed in the shared resources directory.

Important: You can specify the shared resources directory only the first time you install a package. For best results, use your largest drive. You cannot change the directory location later unless you uninstall all packages.

Considerations related to Rational Programming Patterns

When you install Rational Programming Patterns, you must indicate a package group for all the products of the client part and another package group for all the products of the server part.

You can install the Rational Programming Patterns V9.0.1 by updating the V9.0 or V9.0.0.1 version.

You can also carry out a full installation of the new version. You must then choose one of the following methods:

- Uninstall and reinstall the products in the same package groups.
- Keep the package groups that contain the previous versions of the products and create package groups to install the new versions of the products. Start working in the new installation. If everything works fine, you can remove the old installation. This method is recommended.

If your current Installation Manager version is too old to install Rational Programming Patterns V9.0.1 and its required products, it will be automatically updated when you install one of the products from a launchpad.

The client part requires the installation of the following products in the same package group:

- Rational Developer for System z V9.0 for a System z environment,
- Rational Developer for AIX and Linux V9.0 for a System p environment,
- Rational Team Concert V4.0.3,
- Rational Programming Patterns client V9.0.1.

Note: All the other versions of these products that are available when this version of Rational Programming Patterns is released are also compatible.

The server part requires the installation of the following products:

- For a Windows, UNIX or Linux environment, install Jazz Team Server V4.0.3 and Rational Programming Patterns V9.0.1 server in a server package group.
- For a z/OS® environment, install Jazz Team Server V4.0.3 and install the Rational Programming Patterns V9.0.1 FMID.

Note: You can optionally use the functions of the Rational Developer for System z server. You must then install the Rational Developer for System z V9.0 server with the SMP/E tool before you install Jazz Team Server V4.0.3 in the same package group.

Note: All the other versions of these products that are available when this version of Rational Programming Patterns is released are also compatible.

Installation methods for Rational Programming Patterns

Four installation methods are available.

You must consider the following questions to determine your installation method:

- What are the format and method by which you access your installation files? (for example, from installation disks or files that are downloaded from IBM Passport Advantage®).

- Are you installing onto your own workstation, or are making the installation files available to your enterprise?
- Are you installing with the Installation Manager GUI, or are you installing silently?

There are four installation methods:

- Installing from the installation disks,
- Installing from a downloaded electronic image on your workstation,
- Installing from an electronic image on a shared drive,
- Installing from a repository on an HTTP server.

Installing from the installation disks

With this method, you have the physical disks that contain the installation files, and you install Rational Programming Patterns on your own workstation.

Installing from a downloaded electronic image on your workstation

With this method, you download the installation files from IBM Passport Advantage and you install Rational Programming Patterns on your own workstation.

Installing from an electronic image on a shared drive

With this method, you place the electronic image on a shared drive so that users in your company can access the Rational Programming Patterns installation files from a single location. It is also useful when you must install in silent mode on several user systems.

Installing from a repository on an HTTP server

With this method, you place the files of the IBM Rational Programming Patterns package, and possibly the associated products, on an HTTP or HTTPS web server with the IBM Packaging Utility. When they install, users indicate the URL of the web server that contains these package files to access them. The directory of the HTTP or HTTPS web server that contains the packages is named a repository.

For more information, see Chapter 11, “Appendix: IBM Packaging Utility,” on page 39.

Installing silently

If you install from an electronic image or a repository, you can run Installation Manager in silent mode.

You can then use a batch process to install, update, modify, and uninstall packages through scripts. If you are an administrator, it enables you to customize the installation on the developers' workstations.

A silent installation comprises the following main tasks:

1. If you are planning to install silently on multiple systems, copy the installation image to a location on a shared drive or server.
2. Create the response file.

3. Run Installation Manager in silent installation mode.

When you run Installation Manager in silent mode, its user interface is not available. So you use a response file instead to input the commands that are required to install the package. An `install.xml` sample response file is available in the `InstallerImage_win32` subdirectory of the client and in the `InstallerImage_system` subdirectory (where `system` is `aix`, `linux_s390`, `linux_x86`, or `win32`) of the server. You can use it as is or modify it to your own specifications.

For more information, see *Working in silent mode* in the Installation Manager information center.

Copying the installation image to a shared drive or server

If you are planning to install silently on multiple systems, you must copy the installation image to a location on a shared drive where other systems in your intranet can access it.

To copy the installation image from physical installation disks to a shared location, take the following steps:

1. Insert the Rational Programming Patterns installation disk into the DVD drive.
2. Copy the contents of the disk into the shared location where you want to store the installation image.
3. You can make other offerings that are bundled with Rational Programming Patterns (Rational Developer for System z for example) available for silent installation. Two cases are then possible.
 - If the bundled offering is contained on a single installation disk, copy the contents of that installation disk to the directory you created in Step 1.
 - If the bundled offering includes multiple installation disks, perform the following steps.
 - a. Create a directory in your shared location to contain the product installation files for the bundled offering. You name this directory as you want.
 - b. Create a `diskN` directory for each installation disk in the directory you created. `N` is the number of the installation disk. Copy the contents of each installation disk into the corresponding `diskN` directory you created for that disk.
 - Create the response file.
 - Perform the silent installations.

To copy the installation image from an electronic image to a shared location, take the following steps:

1. Extract each of the compressed files that you downloaded for Rational Programming Patterns and any bundled offerings you want to make available for silent installations to the shared location where you want to store the image. Alternatively, you can extract the compressed files on your local workstation and then copy the uncompressed files and directories to the shared location.
2. In the shared location, verify that you now have the following elements:
 - The Rational Programming Patterns installation disks must be at the root of the shared directory.
 - A directory must also be created at the root of the shared directory for each bundled offering that you copied to your shared location. Create a `diskN` directory for each installation. `N` is the number of the installation disk

- Create the response file.
- Perform the silent installations.

Alternatively, you can copy your installation image to a repository on an HTTP web server and install silently using the repository. To create a repository, you must use the IBM Packaging Utility. For more information, see Chapter 11, “Appendix: IBM Packaging Utility,” on page 39.

Chapter 4. Installing the required products

Installing VisualAge Pacbase

To obtain VisualAge Pacbase 3.5 Y09B, send an email to the Rational Programming Patterns support (vapacsup@us.ibm.com for North America or vapacsup@fr.ibm.com for all other regions).

Follow the installation instructions that are indicated in the VisualAge Pacbase guide specific to your platform.

The VisualAge Pacbase installation guides are shipped with the VisualAge Pacbase product. They are also available on the VisualAge Pacbase documentation site (section **The administrator's documentation**).

Installing the required products for the client part

Installing for a System z client environment

To target a System z client environment only, you must install the Rational Developer for System z V9.0 client and then the Rational Team Concert V4.0.3 client.

Installing the Rational Developer for System z V9.0 client

Install the Rational Developer for System z V9.0 installation package. Do not clear any of the features that are selected by default on the **Features** page of Installation Manager.

Verify that the IBM Installation Manager page that displays the installation results shows: **The packages are installed**. There must not be any error or warning icon. Moreover the list of the installed packages must contain all the packages of the products that were selected for the installation.

Installing the Rational Team Concert V4.0.3 client

You can install Rational Team Concert from its installation disk or electronic image. But you can also install it as an optional feature to the Rational Developer for System z client.

Important: The Rational Team Concert V4.0.3 client must be installed in the same package group as the Rational Developer for System z V9.0 client.

Verify that the IBM Installation Manager page that displays the installation results shows: **The packages are installed**. There must not be any error or warning icon. Moreover the list of the installed packages must contain all the packages of the products that were selected for the installation.

Installing for a System p environment

To target a System p environment only, you must install Rational Developer for AIX and Linux V9.0 and then the Rational Team Concert V4.0.3 client.

Installing Rational Developer for AIX and Linux V9.0

Install the Rational Developer for AIX and Linux V9.0 installation package.

Verify that the IBM Installation Manager page that displays the installation results shows: **The packages are installed.** There must not be any error or warning icon. Moreover the list of the installed packages must contain all the packages of the products that were selected for the installation.

Installing the Rational Team Concert V4.0.3 client

You can install Rational Team Concert from its installation disk or electronic image.

Important: The Rational Team Concert V4.0.3 client must be installed in the same package group as the Rational Developer for AIX and Linux V9.0 client.

Verify that the IBM Installation Manager page that displays the installation results shows: **The packages are installed.** There must not be any error or warning icon. Moreover the list of the installed packages must contain all the packages of the products that were selected for the installation.

Installing the product required for the server part

Before you install the Rational Programming Patterns server, you must install Jazz Team Server and CCM Application V4.0.3.

- If you install on Windows 2008, AIX, Linux, or Linux for System z, the Jazz Team Server and CCM Application V4.0.3 must be installed with Installation Manager.

Verify that the IBM Installation Manager page that displays the installation results shows: **The packages are installed.** There must not be any error or warning icon. Moreover the list of the installed packages must contain all the packages of the products that were selected for the installation.

- If you install on z/OS, the Jazz Team Server and CCM Application V4.0.3 must be installed with SMP/E.

Note: Installing the Rational Developer for System z host components is not required for using the Rational Programming Patterns server. However, if you want to use Rational Developer for System z specific functions, you can install the Rational Developer for System z server.

Chapter 5. Installing Rational Programming Patterns

Installing the Rational Programming Patterns client

After installing the products required for your target environment, you must install the Rational Programming Patterns client on Windows Vista, Windows XP Professional, or Windows 7 Professional. You install it from its launchpad.

Before you begin

The Rational Programming Patterns client must be installed in the same package group as the products required for the client part, with the same type of rights (administrator or user). Moreover, Microsoft Visual C++ Redistributable Package must already be installed.

To select the installation method that is best suited to your needs, see the information in “Installation methods for Rational Programming Patterns” on page 7.

You start installing in different ways, depending on the selected method:

- Installing from an installation disk.
 1. Insert the installation disk into your DVD drive.
 2. To start installing, open the Rational Programming Patterns launchpad.

If autorun is enabled on your system, the launchpad program automatically opens. If autorun is not enabled, start the launchpad program by running the **launchpad.exe** command from the root of the disk.
- Installing from an electronic image on your workstation.
 1. Download the installation files from IBM Passport Advantage. Extract the installation image from the compressed files that you downloaded.
 2. To start installing, open the Rational Programming Patterns launchpad.

You start the launchpad program by running the **launchpad.exe** command from the root of the extracted directory
- Installing from an electronic image on a shared drive.

Download the installation files from IBM Passport Advantage. Extract the installation image from the compressed files that you downloaded

To install interactively from the installation files on the shared drive, run the **launchpad.exe** command from the root of the extracted directory.

You can also install in silent mode. For explanations, see the note in the “Installing silently” on page 8.
- Installing from a repository on an HTTP web server.

This method assumes that the repository that contains the packages for IBM Rational Programming Patterns and any bundled offerings has been created on the HTTP or HTTPS web server. For information about how to copy installation packages to a web server, see Chapter 11, “Appendix: IBM Packaging Utility,” on page 39.

To install the Rational Programming Patterns package from a repository to a web server, perform the following steps:

 1. Start IBM Installation Manager.

2. On the **Start** page of Installation Manager, click **File > Preferences** and then click **Repositories**. The **Repositories** page opens, showing any available repositories, their locations, and whether they are accessible.
3. Click **Add repository** and indicate the URL of the repository that contains the installation packages. The new or changed repository location is listed. If the repository is not accessible, an error icon is displayed in the **Accessible** column.
4. Click **OK** to exit.

Procedure

1. From the Rational Programming Patterns launchpad, select **Install Rational Programming Patterns** to open Installation Manager.
The repository location information is automatically configured. So you do not have to set it manually in the Installation Manager preferences.
2. The first page of the **Install Packages** wizard displays the Rational Programming Patterns package available for installation. Select it.
3. You might be prompted to update IBM Installation Manager to a newer version if one is available. If you click **Yes**, Installation Manager updates itself and informs you that it must be restarted to complete the update. Click **OK** to restart Installation Manager.
4. On the **Licenses** page, read and accept the license agreement for the selected package. Rational Programming Patterns will be installed with a trial license that expires in 60 days. You will need to activate the licensed version of the product to use it after the expiration date.
5. On the **Location** pages, the location that already contains the products required for the client part must be selected.
6. On the first **Features** page, select the languages that you want to install for this package group.
On the next **Features** page, select the features that you want to install. A line **RPP Screen simulator (for an installation on top of RDz)** is displayed under the Rational Programming Patterns package.
 - If you install Rational Programming Patterns on top of Rational Developer for System z, select this line. It enables you to see the simulation of the Rational Programming Patterns Screens in the **Screen emulator** view, which is dedicated to this use.
 - If you install Rational Programming Patterns on top of Rational Developer for AIX and Linux, this line is ineffective. See the help on the **-CE Lines** tab of the Screen entity for explanations on how to start the emulator on this environment.
7. On the **Summary** page of Installation Manager, click **Install**.

Results

Verify that the IBM Installation Manager page that displays the installation results shows: **The packages are installed**. There must not be any error or warning icon. Moreover the list of the installed packages must contain all the packages of the products that were selected for the installation.

Installing the Rational Programming Patterns server

You can install the Rational Programming Patterns server either on Windows 2008, AIX, Linux, Linux for System z, or on z/OS.

Before you begin

Jazz Team Server V4.0.3 must already be installed

The Rational Programming Patterns server must be installed in the same package group as the Jazz Team Server V4.0.3 with the same type of rights (administrator or user).

Installing the server on Windows, AIX, or Linux

You access the installation files of the server from its installation disks, electronic image, or an HTTP or HTTPS server.

Procedure

1. Depending on the installation method you selected, you must perform one of the following actions:

- Insert its installation disk into the DVD drive.
- Download its electronic image from the IBM Passport Advantage website and extract all the compressed files. If you are an administrator, you can make them available on a shared drive.
- Access a repository on an HTTP web server.

For explanations, see the “Installation methods for Rational Programming Patterns” on page 7.

The contents of the installation disk and the extracted electronic image are the same:

- A docs directory, with the relevant documentation.
- A distributed directory that contains:
 - A disk1 subdirectory, with the Rational Programming Patterns server repository.
 - Four InstallerImage_system subdirectories, where system is aix, linux_s390 (Linux for System z), linux_x86 or win32 (for Windows). These subdirectories contain the repository for Installation Manager and the executable files of the Rational Programming Patterns server, adapted to the operating system.

Each of these directories also contains an install.xml sample response file for the installation in silent mode.

- For UNIX, the installRPP_system_admin.sh and installRPP_system_user.sh script files, where system is aix, linux_s390 (Linux for System z) or linux_x86. Each of these scripts starts the installation of the Rational Programming Patterns server, according to the selected operating system. The installation is automatically carried out from Installation Manager, with administrator or user rights, with all the preferences and selections already entered for you.
 - Two batch command files installRPP_win32_admin.bat and installRPP_win32_user.bat, which start the Rational Programming Patterns server installation on Windows. The installation is automatically carried out from Installation Manager, with administrator or user rights, with all the preferences and selections already entered for you.
2. To perform a standard installation, run one of the following files:
- One of the script files for AIX, Linux, or Linux for System z (installRPP_system_admin.sh or installRPP_system_user.sh).

- The installRPP_win32_admin.bat or installRPP_win32_user.bat file for Windows 2008.

To specify your own installation selections, install the server from one of the four subdirectories (InstallerImage_system). Open Installation Manager, enter the path to the Rational Programming Patterns server repository and select your preferences on all the Installation Manager pages.

Installing the server on z/OS

To install the Rational Programming Patterns V9.0.1 server on z/OS, you must install the HAKF901 FMID on the server already installed.

Procedure

1. Access the files that are required to install the Rational Programming Patterns server on z/OS, by performing one of the following actions:
 - Insert its installation disk into the DVD drive.
 - Or download its electronic image from the IBM Passport Advantage website and extract all the compressed files. If you are an administrator, you can make them available on a shared drive.

The contents of the installation disk and the extracted electronic image are the same:

- A docs directory, with the relevant documentation.
This directory contains the HAKF901.pdf installation guide (Program Directory). It contains all the instructions to install the Rational Programming Patterns server on z/OS, through SMP/E.
- A zos directory that contains a compressed file for the installation through SMP/E. This file contains the following installable parts of the HAKF901 FMID:
 - IBM.HAKF901.F1.BIN,
 - IBM.HAKF901.F2.BIN,
 - IBM.HAKF901.JCL.BIN
 - IBM.HAKF901.SMPMCS.

2. Follow the instructions of the Program Directory in the docs directory.
3. In z/OS, parametrize and run the BRPCPCM JCL to copy the rpp-profile.ini file to the directory that will contain all the applications customized configuration files.

The **BLZHOME**, **BLZCONF**, and **BLZWORK** parameters must be identical to those of the BLZCPCM JCL.

Chapter 6. Post-installation tasks

Integrating with Rational Team Concert

Rational Programming Patterns is now installed on top of IBM Rational Team Concert. You must configure Rational Team Concert to integrate Rational Programming Patterns with it.

About this task

The purpose of this integration is to prepare the building of indexes in the Rational Programming Patterns server. You must carry out the following actions:

- From the Rational Team Concert web client, ensure that the user has the required permissions for the configuration,
- From the Rational Team Concert Eclipse client, create a project area (if it has not already been done),
- From the Rational Team Concert Eclipse client, create three language definitions and associate indexing scanners to them,
- From the Rational Team Concert Eclipse client, select the data streams that will be scanned.

For an optimum integration, you are advised to modify some default parameters.

Note: After successive installations of reinstallations, the server cache might be desynchronized with the actual server configuration. For example, the Rational Programming Patterns scanners might not be displayed. So, the language definitions that are related to Rational Programming Patterns cannot be correctly specified. You must then reset the cache.

1. Log in as an administrator to [https://\[fully-qualified hostname\]:9443/ccm/admin?internal](https://[fully-qualified hostname]:9443/ccm/admin?internal).
2. In the **Internal tools** entry, click **Provision status**. All the contributors to the Rational Team Concert, server are displayed. If the Rational Programming Patterns plug-ins are displayed among these contributors, you must reset the cache.
3. To reset the cache, click **Reset server** that is located after **Provision status**.
4. Click the **Request server reset** button. The cache will then be reset the next time that the server is started.
5. Stop and start the server again. The server start takes longer than a standard start because the cache is reset.

Procedure

1. Create a user and assign permissions to this user:
 - a. Start the Jazz Team Server and open its setup wizard ([https://\[fully-qualified hostname\]:9443/jts/setup](https://[fully-qualified hostname]:9443/jts/setup))
Follow all the steps explained in the Rational Team Concert documentation: Running the setup wizard
 - b. Create a user, if it has not already been done.
 - c. Assign this new user a **Developer for IBM Enterprise Platforms Client Access License**.

- d. Verify that the created user has all the repository permissions and the **Developer for IBM Enterprise Platforms Client Access License**.
2. Create a project area:
 - a. Start Rational Programming Patterns.
 - b. Open the **Work Items** perspective.
 - c. In the **Team Artifacts** view, create a repository connection at:


```
https://[fully-qualified hostname]:9443/ccm
```

 with the administrator user already created.
 - d. Create a project area.

Note: Explanations about project areas can be found in the Rational Team Concert information center.

3. Verify the access permissions:

As an administrator, you must verify that the user who is to create the language definitions for the Rational Programming Patterns artifacts has the appropriate access permissions.

 - a. From the **Work Items** perspective of the Eclipse workspace, open the project area by right-clicking it and selecting **Open**.
 - b. On the **Overview** tab of the project area, verify the role that is assigned to the user who is to create the language definitions.
 - c. Open the **Process Configuration** tab. Expand **Project Configuration** in the **Configuration** tree and select **Permissions**. In the list of **Roles**, select the role of the user who is to create the language definitions. In the **Permitted actions** tree, verify that the lines **Language Definitions** and **Source Code Data** are selected.

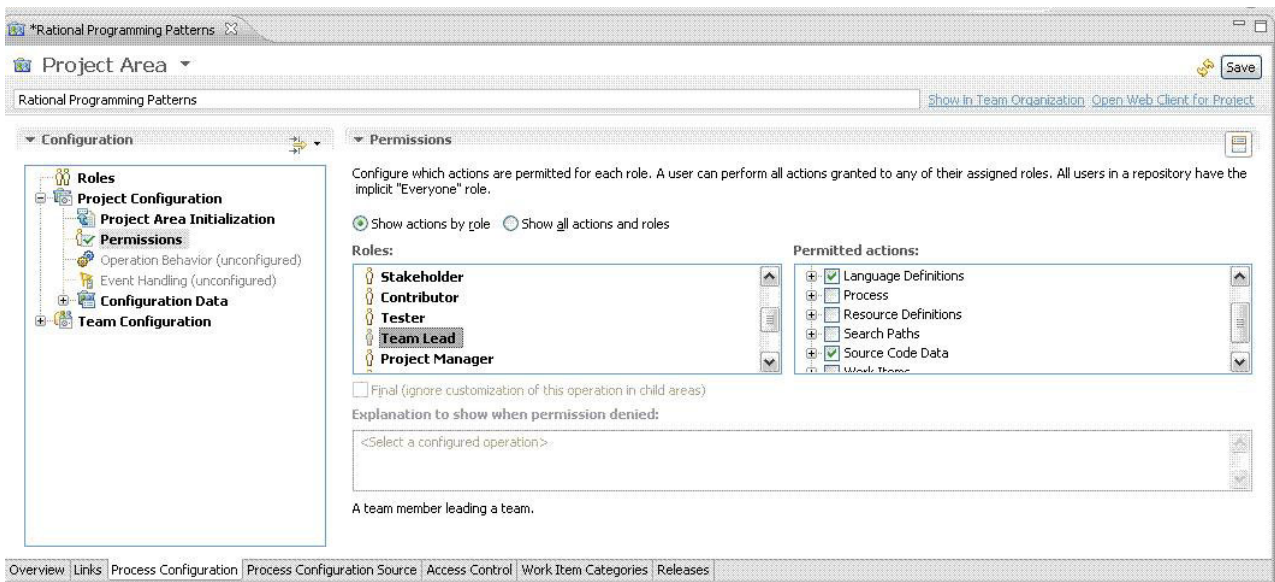


Figure 1. The Process Configuration tab

- d. Save.
4. Create the language definitions and select the associated scanners:

You can now create three language definitions:

 - RPP Design,
 - RPP Design Path,

- RPP Generated.
- a. Expand the project area in the **Team Artifacts** view. Then, expand **Enterprise Extensions > System Definitions > z/OS**. Right-click **Language Definitions** and select **New Language Definition**. The Language Definition editor opens up. It contains a General tab and a Scanners tab.

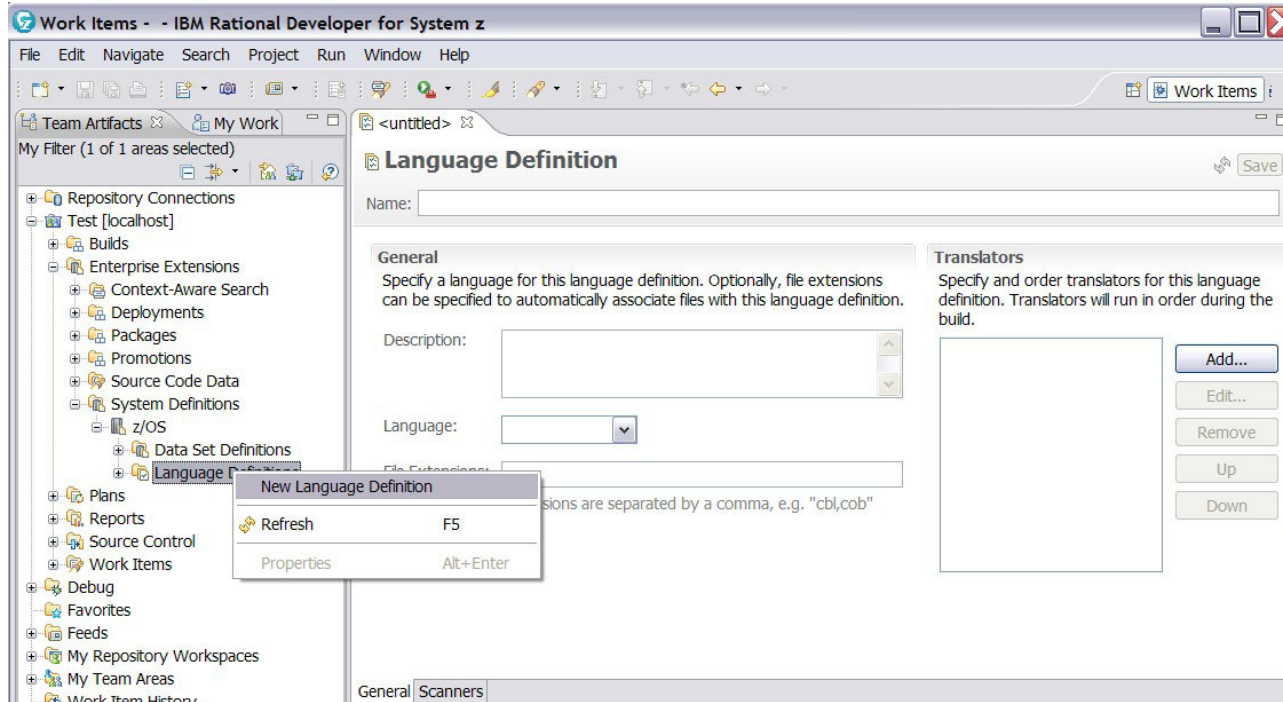


Figure 2. The Language Definition editor

- b. Create the language definition for the design artifacts.
 - 1) In the General tab:
 - Enter RPP Design in the **Name** field.
 - Enter an optional description, such as RPP Design File Scanner, in the **Description** field.
 - Select **COBOL** in the **Language** field.
 - Enter the following file extensions in the **File Extensions** field:
 dataaggregate,dataelement,dataunit,pacblockbase,pacdialog,pacscreen,
 pacdialogserver,pacserver,paclibrary,pacmacro,pacprogram,pacreport,pacinputaid,
 pactext,metaentity,userentity,metadataaggregate,metaentitytype

Important: Only these file extensions are used by Rational Programming Patterns. Wildcards cannot be used.
 - 2) In the Scanners tab, remove the default scanner and add the RPP Design Scanner for this language definition.
 - 3) Save.
- c. Create the language definition for the design path artifacts.
 - 1) Select **New Language Definition** again.
 - 2) In the General tab:
 - Enter RPP Design Path in the **Name** field.
 - Enter an optional description, such as RPP DesignPath File Scanner, in the **Description** field.

- Select **COBOL** in the **Language** field.
- Enter the following file extension in the **File Extensions** field:
designpath

Important: Only this file extension is used by Rational Programming Patterns. Wildcards cannot be used.

- 3) In the Scanners tab, remove the default scanner and add the RPP DesignPath Scanner for this language definition.
 - 4) Save.
- d. Create the language definition for the generated artifacts.
- Select **New Language Definition** again.
 - In the General tab:
 - Enter RPP Generated in the **Name** field.
 - Enter an optional description, such as RPP Generated File Scanner, in the **Description** field.
 - Select **COBOL** in the **Language** field.
 - Enter the following file extensions in the **File Extensions** field:
cblpdp,bmspdp,mappdp,mfspdp

Important: Only these file extensions are used by Rational Programming Patterns. Wildcards cannot be used.

- In the Scanners tab, remove the default scanner and add the RPP Generated File Scanner for this language definition.
 - Save.
5. Associate data streams with the language definitions:
Specify which streams are to be scanned. In the **Team Artifacts** view, under **Enterprise Extensions**, right-click **Source Code Data**. Then, click **Select streams for scanning**. Specify the stream.

If you cannot see any steam, you must create one before you select it. Follow the instructions of 'Creating steams' in the Rational Team Concert documentation.

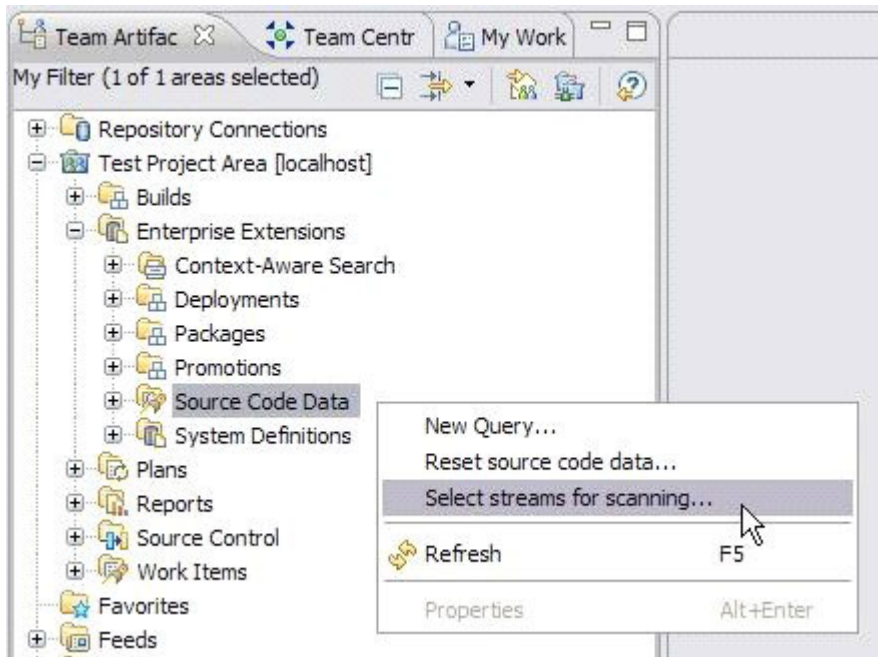


Figure 3. How to access the stream selection wizard

6. Modify parameters

- Memory parameters of the client workstation:

- eclipse.ini

You must modify the memory parameter of the Software Delivery Platform. Its maximum value varies according to the operating system and the memory available. You must then find the maximum value for your configuration.

To do so, edit the eclipse.ini file that is located directly under the root of your Software Delivery Platform.

The Java™ heap size is set to 1024 by default (in **-Xmx1024m**). You can increase this value to adapt it to your configuration.

Note: For an installation in 32-bit mode, the maximum value is 1.5 gigabyte.

- scm.ini

The migration of data from Pacbase to Rational Programming Patterns uses the scmttools to save the migrated data in Rational Team Concert. You must modify the scm.ini file like the eclipse.ini file.

The scm.ini file is in `...\scmttools\eclipse`. The Java heap size is set to 512 by default (in **-Xmx512m**).

- Memory parameter of the server:

You can adapt the server.startup.bat file that is in the `...\server` directory. In a 64-bit environment, and if the server allows it, you can modify the line `set JAVA_OPTS=%JAVA_OPTS% -Xmx4G` to increase the maximum memory in use to 8G.

- Properties of the Rational Team Concert server:

- No creation of duplicate components:

By default, the component names are not unique in the Rational Team Concert repository. To avoid inconsistencies, an administrator is then advised to prevent users from creating components whose names are not unique.

- a. Log in as an administrator to `https://[fully-qualified hostname]:9443/ccm/admin`.
 - b. In the **Configuration** entry, click **Advanced properties**.
 - c. Scroll the properties down to the **SCM** category. Scroll the category down to **com.ibm.team.scm.service.internal.tasks.InternalScmService**.
 - d. Find the property **Encourage component names to be unique**.
 - e. Click its current value (**false** by default) and change it to **true**.
 - f. Click the **Save** button that is at the beginning of the properties page.
- Maximum number of files in source code data resource:
With this modification, you avoid a too large memory consumption.
- a. Log in as an administrator to `https://[fully-qualified hostname]:9443/ccm/admin`.
 - b. In the **Configuration** entry, click **Advanced properties**.
 - c. Scroll the properties down to the **Source code data collection** category. This category contains the line **com.ibm.team.enterprise.internal.metadata.collection.service.MetadataCollectionService**.
 - d. Change the value of the property **Max. number of files in source code data resource**. Click its current value and enter 100 instead.

• DB2 parameter:

To run Rational Team Concert with a DB2® database, you can see the jazz.net site for information about the DB2 tuning. To import large DB2 databases, you must increase the following values:

```
db2 UPDATE DB CFG FOR CCM using LOGPRIMARY 100
db2 UPDATE DB CFG FOR CCM using LOGSECOND 100
```

where 100 is the increased value. To see the values, use the following command: :

```
db2 GET DB CFG FOR sample |grep '(LOG[FPS]'
```

You obtain the following values:

```
Size of journal files (4 Kb)      (LOGFILSIZ) = 1000
Number of primary journal files  (LOGPRIMARY) = 3
Number of secondary journal files (LOGSECOND) = 2
```

Results

The configuration steps are now finished.

When you deliver a project that contains Rational Programming Patterns artifacts, the artifacts will be indexed after the indexing process has been manually or automatically activated. You will then be able to perform searches on the server repository.

Creating a Rational Programming Patterns V9.0.1 workspace

You cannot reuse a workspace that was created with a previous version of the product.

Rational Programming Patterns V9.0.1 cannot run with the VisualAge Pacbase data that was migrated from a previous version. So, you must run the VisualAge Pacbase 3.5 Y09B extraction and migration procedures.

Then, you must create a V9.0.1 workspace to import the data.

Accessing the help

The help that Rational Programming Patterns accesses after its installation is the remote help, which requires an Internet connection. With this remote help, you always have the latest content available from within your product. After you start the product, you can also install the help locally.

By default, Rational Programming Patterns is configured to access the remote help from the product information center, at:

<http://pic.dhe.ibm.com/infocenter/rpphelp/v9r0/index.jsp>

When you install, you cannot select the way that the help is accessed. However, you will be able to modify it later at any moment.

Note: In the links below, the explanations about how to choose the access mode to the help upon installation do not apply to Rational Programming Patterns. All the other explanations apply.

For more information about installing and configuring help, see the section [Configuring help content](#).

To install the help content locally, see one of the following topics:

- [Downloading help content from the Help updater site.](#)
- [Downloading help content from the Help download site.](#)

Note: Downloading help content from the help download site uses the RPP901_updateSite.zip file. If you do not have internet access, this file is also available in the docs directory of the Rational Programming Patterns installation disks and images. However, it is advised to use the version from the help download site because it is the most up-to-date version.

Managing licenses

Licensing for your installed IBM software and customized packages is administered with the **Manage Licenses** wizard in IBM Installation Manager. This wizard displays license information and helps you configure the licences for each of your installed packages.

The license that is provided with Rational Programming Patterns expires 60 days after installation. You must activate Rational Programming Patterns to use it after the expiration date.

Using the **Manage Licenses** wizard, you can upgrade the trial version to a licensed version by importing an activation kit. You can also enable floating license enforcement for offerings with trial or permanent licenses to use floating license keys from a license server.

For more information about the Rational Programming Patterns licenses, see the Rational licensing support page.

License types

You can buy different types of licenses.

Authorized user license

This license enables a single, specific individual to use a Rational software product. Purchasers must obtain an authorized user license for each individual user who accesses the product in any manner. An authorized user license cannot be reassigned unless the purchaser replaces the original assignee on a long-term or permanent basis.

Floating license

This license is for a single software product that can be shared among multiple team members. However, the total number of concurrent users cannot exceed the number of floating licenses you purchase. For example, if you purchase one floating license for a Rational software product, then any user in your organization can use the product at any time. Another person who wants to access the product must wait until the current user logs off.

To use floating licenses, you must obtain floating license keys and install them on a Rational License Server. The server responds to user requests for access to the license keys. It grants access to the number of concurrent users that matches the number of licenses that the organization purchased.

Token license

The token-based license model means that you can buy some token licenses.

Token-based licenses can be used with floating licenses only. They cannot be used for authorized user license

License enablement

If you are installing Rational Programming Patterns for the first time or want to extend a license to continue using it, you have options on how to enable licensing.

Licenses are enabled in the following two ways:

- Importing a product activation kit
- Enabling Rational Common Licensing to obtain access to floating license keys

Product activation kits contain permanent or term license keys. You purchase the activation kit, download the activation kit .zip file to your local workstation, and then import the activation kit .jar file to enable the license. Use IBM Installation Manager to import the activation kit to your product.

Optionally, you can obtain floating license keys, install IBM Rational License Server, and enable floating license enforcement for your product. Floating license enforcement provides the following benefits:

- License compliance enforcement across the organization
- Fewer license purchases

Importing a product activation kit

To install your license key, you must import the activation kit from the download location or the product media by using IBM Installation Manager.

About this task

You must first purchase an activation kit. Insert the appropriate disk or download the activation kit from IBM Passport Advantage to an accessible workstation. The activation kit is packaged as a Java archive (.jar) file. The .jar file contains the permanent license key and must be imported to activate your product.

Procedure

1. Start IBM Installation Manager.
2. On the main page, click **Manage Licenses**.
3. Select the **Rational Programming Patterns** package and click **Import Activation Kit**.
4. Click **Next**. Details for the selected package are shown, including the current license type and the version range of the license.
5. Browse to the path on the media disk or download the location for the activation kit. Then, select the appropriate Java archive (.jar) file and click **Open**.
6. Click **Next**. The **Summary** page displays the target installation directory of the activation kit, the product that the new license applies to, and version information.
7. Click **Finish**.

Results

The product activation kit with its license key is imported to the product. The **Manage Licenses** wizard indicates whether the import is successful

Activating floating licenses

If your team environment supports floating license enforcement, you can activate floating licenses for your product and configure a connection to obtain access to floating license keys.

About this task

Before you activate floating license enforcement, you must obtain the license server connection information from your administrator.

Procedure

1. Start IBM Installation Manager.
2. On the main page, click **Manage Licenses**
3. Select the appropriate Rational Programming Patterns package and click **Configure Floating license support**.
4. Click **Next**
5. On the **Licenses** page, accept the license agreement for the selected package
6. On the **Floating License Support** page, select the **Enable Floating license enforcement**.
7. Configure one or more license server connections by following these steps:
 - a. Click an empty field in the **Servers** table or click **Add**.

- b. If your administrator provided you with information for a redundant server environment, click **Redundant Server**. Fields for the primary, secondary, and tertiary server names and ports are displayed.
- c. Enter the host name of the license server in the **Name** field.
- d. (Optional) Enter a value in the **Port** field for environments where a firewall is used. Do not assign a value to this port unless your administrator instructs you to do so.
- e. For redundant server environments, enter the names and ports (if required) for the secondary and tertiary servers
- f. (Optional) You can click **Test Connection** to confirm that the connection information is correct and that the server is available.
- g. Click **OK**.
8. Click **Next**.
9. (Optional) Configure the license usage order for your shell shared or custom packages. The order of licenses in the list determines the order in which your package attempts to obtain access to license keys for a given licensed package.
10. Click **Finish**.

Results

The **Manage Licenses** wizard indicates whether the floating licenses configuration is successful.

When you next open the enabled product, a connection is created to the license server to obtain a license key from the pool of available floating license keys.

Purchasing licenses

You can purchase new licenses if your current product license is about to expire or if you want to acquire more product licenses for team members.

Procedure

1. Determine the type of license you want to purchase
2. Go to ibm.com[®] or contact your IBM marketing representative to purchase the product license. For details, visit the IBM web page on “How to buy software”.
3. Depending on the type of license you purchase, use the Proof of Entitlement you receive and do one of the following to enable your product:
 - If you purchase authorized user licenses, go to Passport Advantage and follow the instructions there for downloading your product activation kit file. After you download the activation kit, you must import the product activation .jar file with Installation Manager.
 - If you purchase floating licenses, connect to the IBM Rational License Key Center. An IBM registration is required. You can use your Proof of Entitlement to obtain floating license keys for your license server.

Optionally, you can also go to Passport Advantage to download the activation kit for your product. After you import the activation kit, you can switch from a floating to a permanent license type if you use work offline for long periods.

To import the activation kit or enable floating license support for your product, use the **Manage Licenses** wizard in IBM Installation Manager.

Installing and configuring licenses in silent mode

You can import product licenses and configure floating license support silently, in the same way you can install packages silently.

You must generate a response file to be used by IBM Installation Manager to configure your licenses.

When you record the response file, use the **Manage Licenses** wizard to import an activation kit or configure floating license support before you exit Installation Manager. The information necessary for performing these tasks silently are written in the response file.

For information about silent installation, see “Installing silently” on page 8.

Viewing license information

From IBM Installation Manager, you can review the license information of your installed packages, including the license types and their expiration dates.

Procedure

1. Start IBM Installation Manager.
2. On the main page, click **Manage licenses**.

Chapter 7. Starting Rational Programming Patterns

You can start Rational Programming Patterns from the Windows desktop environment or the command-line interface.

About this task

To start Rational Programming Patterns from the Windows **Start** menu, click **Start > All Programs > IBM Software Delivery Platform > IBM Rational Programming Patterns**. You can then create a shortcut on your desktop to easily start Rational Programming Patterns.

To start Rational Programming Patterns from a command line, type

```
<product_inst_dir>eclipse.exe -product com.ibm.rational.rpp.product.ide
```

The **Pattern Driven Programming** perspective is automatically added to your workspace and it becomes the default perspective. The PDP editors also become the default editors.

Chapter 8. Testing the installation

Before you can work with the new products, you must ensure that the installation was successful.

Procedure

1. At the end of each product installation, you must ensure that no error has occurred. This verification step is indicated in this document for each installation.
2. Verify that all the products of the client part are installed in the same package group and that all the products of the server part are installed in the same package group (different from the package group of the client part).
To do so, start IBM Installation Manager by selecting **Start > All programs > IBM Installation Manager > View installed packages**. You must see the package group that contains Rational Programming Patterns client. Verify that this group also contains the packages of the required products.
Do the same for the server part.
3. Start Rational Programming Patterns. The **Pattern Driven Programming** perspective is automatically displayed.
 - a. From the **Design Explorer** view, create a location (similar to a VisualAge Pacbase database). Right-click and select **New > Location**. Name this location and click **Finish**.
 - b. Create a Library. It contains the generation parameters of each instance.
 - 1) Right-click the location and select **New > Pac Library**.
 - 2) Enter the following information in the Library creation wizard:
 - Indicate a project name.
 - Leave the package to blank.
 - Enter the Library name on three characters.
 - Enter the Library label.
 - 3) Click **Finish**.
 - c. Create a Data Element.
 - 1) Right-click the location and select **New > Pac Data Element**.
 - 2) Enter the following information in the Data Element creation wizard:
 - Leave the default project. This project is the project in which you created the Library.
 - Leave the package to blank.
 - Enter the Data Element name on six characters maximum.
 - Leave the **Parent Data Element** to blank.
 - Enter the Data Element format (X for example).
 - Click **Browse** in the **Generation parameters** field. Select the created Library.
 - Enter the Data Element label.
 - 3) Click **Finish**.
4. Create a connection to the Rational Team Concert server that will store all the artifacts of your applications. These steps are explained in “Integrating with Rational Team Concert” on page 17.

- a. Start Jazz Team Server.
- b. Create a repository connection from the **Team Artifacts** view of the **Work Items** perspective.
- c. Connect to the project area created upon the integration.
- d. From the project area, verify that three language definitions were created upon the integration. Expand **Enterprise Extensions > System Definitions > z/OS > Language Definitions**, Each of these new language definitions must be exclusively associated with one of the following scanners:
 - RPP Design Scanner
 - RPP DesignPath Scanner
 - RPP Generated File Scanner
5. In the project area, create a stream on the server by right-clicking **Source Code Data** and by selecting **New > Stream**. Save.
6. Create a repository workspace from this stream by selecting **New > Repository workspace**. You can optionally modify the default name. Then, click **Finish**.
7. Share the project in which you created the Library and the Data Element.
 - a. In the **Design Explorer** view of the **Pattern Driven Programming** perspective, right-click the project and select **Team > Share project**.
 - b. Select the repository type (**Jazz Source Control**) and click **Next**.
 - c. Select the repository workspace and create a component by clicking **New component**. Its name usually corresponds to the Library name on three characters.
 - d. Select the component.
 - e. Start sharing the project by clicking **Finish**.
8. Upload the new Library and Data Element to the Rational Team Concert server.
 - a. Open the **Pending changes** view.
 - b. Expand the component line and expand the **Outgoing > Share projects** line. The two new instances must be displayed under the project indicated in their creation wizards.
 - c. Select the line **Share projects**. Right-click and select **Deliver**. The changes are then uploaded to the server.
9. Verify that the upload completed successfully and that the two instances are now on the server.
 In the **Team Artifacts** view of the **Work Items** perspective, expand your project area. Verify that the component is in the stream by expanding **Source control**. Display the repository files by right-clicking the component and selecting **Show > Repository files**. The Library and the Data Element must be displayed in the **Repository files** view.
10. Verify that the server indexing processed by the Rational Programming Patterns scanners is active.
 - a. In the **Team Artifacts** view of the **Work Items** perspective, start an incremental update of the indexes. Expand **Enterprise Extensions > Source code data**. Right-click and select **Update Source code data**.
 - b. Start a server search on the Rational Programming Patterns artifacts to extract the two instances that were previously uploaded to the server.

Chapter 9. Updating Rational Programming Patterns

IBM periodically provides updates for Rational Programming Patterns. So the latest updates can be installed as soon as they are available. You can access these updates from the IBM update server or from a compressed file that you download from Fix Central. To update the Rational Programming Patterns server that is installed on z/OS, you must apply the PTF that is available with the fix.

Updating from the IBM update server

With the package updating function of IBM Installation Manager, you can identify and install the updates for the Rational products that are installed on your workstation. You must install with the same Windows account that originally installed the IBM Rational Programming Patterns product.

Before you begin

By default, an Internet access is required to install updates unless your repository preferences point to a local or network update repository to which your system has access.

Each installed package integrates the URL of its IBM update repository by default. To make IBM Installation Manager search for the packages installed in the IBM update repositories, the option **Search service repositories during installation and updates** must be selected in the repositories preferences page. It is selected by default.

Note: Close all the programs that were installed with Installation Manager before updating.

Procedure

1. On the **Start** page of Installation Manager, click **Update**. The update wizard opens up.
2. If a new release or an update of IBM Installation Manager is found, you must continue with the installation of the new release or update. Follow the instructions in the wizard to complete the installation or update of Installation Manager.
3. On the **Update packages** page, select the package group that contains the version of the Rational Programming Patterns to be updated. Click **Next**. IBM Installation Manager searches for updates in its repositories and the predefined update sites for Rational Programming Patterns. A progress indicator is then displayed.
4. If updates are found, they are displayed in the **Updates** list on the **Update Packages** page below their corresponding package. Only the recommended updates are displayed by default. Click **Show all** to display all updates found for the available packages.
 - To learn more about an update, click the update and review its description under **Details**.

- If more information about the update is available, a **More info** link is included at the end of the description text. Click the link to display the information in a browser. Review this information before installing the update.
5. Select **IBM Rational Programming Patterns** and its new version. Select any other required or optional updates from the list. You cannot select any of the updates that are already installed.

Note: You can click **Select Recommended** to restore the default selections. Updates that have a dependency relationship are automatically selected and cleared together

6. Click **Next**.
7. Read the license agreements for the selected updates. If you agree to their terms, click **I accept the terms of the license agreements**. Click **Next**.
Rational Programming Patterns will be installed with a trial license that expires in 60 days. You will need to activate the licensed version of the product to use it after the expiration date.
8. Select the features to be updated and click **Next**.
9. Review your selections on the **Summary** page.
 - If you want to change the choices you made on previous pages, click **Back**, and make your changes
 - When you are satisfied, click **Update** to download and install the updates. A progress indicator shows the percentage of the installation completed.
10. Click **Finish** to close the wizard.

Results

Verify that the IBM Installation Manager page that displays the installation results shows: **The packages are installed**. There must not be any error or warning icon. Moreover the list of the installed packages must contain all the packages of the products that were selected for the installation.

Updating from a compressed file

Ideally, this update should be installed directly from the IBM update server. However, you can also download a compressed file that contains the update.

About this task

You can select this method in the following cases

- You have a slow or unstable Internet connection and want to use a download manager that can resume the download.
- You have difficulty accessing the live IBM update servers from behind a firewall.
- You prefer to download the update and install it later.

Procedure

1. Connect to the IBM Fix Central site.
 - a. Select the **Rational** product group, the **Rational Programming Patterns** product, its version, and the platform. Click **Next**.
 - b. Select **Show fixes that get me to this version** and click **Next**.
 - c. Select **IBM Rational Programming Patterns** followed by the version and click **Next**.

- d. Sign in.
 - e. Select your download option and click **Next**.
 - f. Click **Download now**.
2. Extract the content of this file to a folder on your system.
 3. Start IBM Installation Manager by selecting, by default, **Start > All Programs > IBM Installation Manager > IBM Installation Manager**.
 4. From the menu bar, select **File > Preferences** to specify the location of the extracted file.
 5. On the **Repositories** page, click **Add repository**. Browse to the extraction directory. This directory contains subdirectories. Expand the subdirectory that corresponds to the client or server installation and select **diskTag.inf**. Click **OK**.
 6. Click **Test connections** to ensure that the new repository can be found.
 7. Click **OK**.

What to do next

The local repository is now set. Follow the procedure that is described in “Updating from the IBM update server” on page 33.

Updating the server on z/OS

To update the Rational Programming Patterns server that is installed on z/OS, you must apply the PTF that is available with the fix.

Procedure

1. Allocate host data sets for the fix

A sequential data set must be allocated on z/OS to receive the fix that you will upload from your workstation. You can do it by submitting the job below. Add a job card and modify the parameters to meet requirements of your site before you submit it.

Note: The following code contains the generic values HXXXXXX and UXXXXXX. You must replace them with the actual values that are available on the support website

```
//ALLOC EXEC PGM=IEFBR14
//*
//UXXXXXX DD DSN=h1q.IBM.HXXXXXX.UXXXXXX,
// DISP=(NEW,CATLG,DELETE),
// DSORG=PS,
// RECFM=FB,
// LRECL=80,
// UNIT=SYSALLDA,
//* VOL=SER=volser,
//* BLKSIZE=6160,
// SPACE=(TRK,(103,20))
//*
```

2. Upload the fix from your workstation to z/OS

Upload the file in binary format from your workstation to the z/OS data set. On a Windows system, you can use FTP from a command line to upload the file. The table shows the commands that are entered by the user, and the values that are assumed.

User enters:	Values
mvsaddr	TCP/IP address of the z/OS system

User enters:	Values
tsouid	TSO user ID
tsopw	TSO password
d:	Drive that contains the fix files
hlq	High-level qualifier that you used for the data set that you allocated in the job above

```
C:\>ftp mvsaddr
Connected to mvsaddr.
220-FTPD1 IBM FTP CS %version% at mvsaddr, %time% on %date%.
220 Connection will close if idle for more than 60 minutes.
```

```
User (mvsaddr:(none)): tsouid
331 Send password please.
```

```
Password: tsopw
230 tsouid is logged on. Working directory is "tsouid".
```

```
ftp> cd ..
250 "" is the working directory name prefix.
```

```
ftp> cd hlq
250 "hlq." is the working directory name prefix.
```

```
ftp> binary
200 Representation type is Image
```

```
ftp> put d:\IBM.HXXXXXX.UXXXXXX
200 Port request OK.
125 Storing data set hlq.IBM.HXXXXXX.UXXXXXX
250 Transfer completed successfully
5744800 bytes sent in 0.28 seconds
```

```
ftp> quit
221 Quit command received. Goodbye.
```

3. Perform SMP/E RECEIVE and APPLY for the fix
4. If you used the @pathPrefix@ setting during the SMP/E installation, edit the @confPath@/ccm/provision_profiles/rpp-profile.ini file and make sure that the file URL points to the absolute path of the rpp-update-sites application.

Important: If you ran the BLZCPCM installation job before the SMP/E installation of the HXXXXXX FMID, you must copy the prefixpath/usr/lpp/jazz/v4.0.3/server/conf/ccm/provision_profiles/rpp-profile.ini file to the prefixpath/etc/jazz403/ccm/provision_profiles/ directory.

Edit the file and replace url=file:ccm/sites/rpp-update-site with url=file:prefixpath/usr/lpp/jazz/v4.0.3/server/conf/ccm/sites/rpp-update-site.

Chapter 10. Uninstalling Rational Programming Patterns

The Rational Programming Patterns installation process does not automatically uninstall the previous versions of the product.

About this task

The **Uninstall** option of IBM Installation Manager uninstalls packages that were previously installed with IBM Installation Manager.

To uninstall packages on Windows, you must connect with the user account that installed the product.

You can uninstall Rational Programming Patterns without uninstalling the other products.

However, if you want to uninstall Rational Developer for System z or Rational Developer for AIX and Linux, you must also uninstall Rational Team Concert and Rational Programming Patterns.

Procedure

1. Close all the programs that you installed with Installation Manager.
2. From the start page of Installation Manager, click **Uninstall**.
3. On the **Uninstall Packages** page, select the packages that you want to uninstall. Click **Next**.
4. On the **Summary** page, review the list of the packages that will be uninstalled and then click **Uninstall**.
5. The **Complete** page is displayed after the uninstallation finishes.
6. Click **Finish** to exit.

Chapter 11. Appendix: IBM Packaging Utility

You can use the IBM Packaging Utility software to copy packages to a repository that can be placed on a web server available over HTTP or HTTPS. It is useful if you have different offerings or service updates you want to place in a single repository in addition to Rational Programming Patterns. You can use this repository to perform interactive or silent installations.

You can use this utility to perform the following tasks:

- Generate a new repository for packages.
- Copy packages to a new repository. You can copy multiple packages into a single repository; you then create a common location in your enterprise from which products can be installed with IBM Installation Manager.
- Delete packages from a repository.

For detailed instructions on installing and using IBM Packaging Utility, see the Installation Manager information center, section Managing packages with Packaging Utility.

To install the Rational Programming Patterns package from a repository on an HTTP or HTTPS server, take the following steps:

1. Place the installation files in a temporary directory on your workstation.
2. Install the IBM Packaging Utility.
3. With the Packaging Utility, copy the Rational Programming Patterns package.
4. Copy the output of the IBM Packaging Utility to an HTTP or HTTPS web server.
5. Copy the installation files for IBM Installation Manager from product disk1 to a shared drive.
6. Instruct users in your organization to install IBM Installation Manager.
7. Provide users the URL for the repository that contains the Rational Programming Patterns package you created earlier.

Note: You can also use the repository to install silently. For more information about silent installation, see “Installing silently” on page 8.

Notices

© Copyright IBM Corporation 2010, 2013.

U.S. Government Users Restricted Rights - Use, duplication or disclosure restricted by GSA ADP Schedule Contract with IBM Corp.

IBM may have patents or pending patent applications covering subject matter described in this document. The furnishing of this document does not grant you any license to these patents. You can send license inquiries, in writing, to:

*IBM Director of Licensing
IBM Corporation
North Castle Drive
Armonk, NY 10504-1785
U.S.A.*

For license inquiries regarding double-byte (DBCS) information, contact the IBM Intellectual Property Department in your country or send inquiries, in writing, to:

*Intellectual Property Licensing
Legal and Intellectual Property Law
IBM Japan, Ltd.
3-2-12, Roppongi, Minato-ku, Tokyo 106-8711 Japan*

The following paragraph does not apply to the United Kingdom or any other country where such provisions are inconsistent with local law:

INTERNATIONAL BUSINESS MACHINES CORPORATION PROVIDES THIS PUBLICATION "AS IS" WITHOUT WARRANTY OF ANY KIND, EITHER EXPRESS OR IMPLIED, INCLUDING, BUT NOT LIMITED TO, THE IMPLIED WARRANTIES OF NON-INFRINGEMENT, MERCHANTABILITY OR FITNESS FOR A PARTICULAR PURPOSE. Some states do not allow disclaimer of express or implied warranties in certain transactions, therefore, this statement may not apply to you.

This information could include technical inaccuracies or typographical errors. Changes are periodically made to the information herein; these changes will be incorporated in new editions of the publication. IBM may make improvements and/or changes in the product(s) and/or the program(s) described in this publication at any time without notice.

Any references in this information to non-IBM Web sites are provided for convenience only and do not in any manner serve as an endorsement of those Web sites. The materials at those Web sites are not part of the materials for this IBM product and use of those Web sites is at your own risk.

IBM may use or distribute any of the information you supply in any way it believes appropriate without incurring any obligation to you.

Licensees of this program who wish to have information about it for the purpose of enabling: (i) the exchange of information between independently created programs and other programs (including this one) and (ii) the mutual use of the information which has been exchanged, should contact:

*Intellectual Property Dept. for Rational Software
IBM Corporation
20 Maguire Road
Lexington, Massachusetts 02421-3112
U.S.A.*

Such information may be available, subject to appropriate terms and conditions, including in some cases, payment of a fee.

The licensed program described in this document and all licensed material available for it are provided by IBM under terms of the IBM Customer Agreement, IBM International Program License Agreement or any equivalent agreement between us.

Trademarks and service marks

IBM, the IBM logo, and ibm.com are trademarks or registered trademarks of International Business Machines Corp., registered in many jurisdictions worldwide. Other product and service names might be trademarks of IBM or other companies. A current list of IBM trademarks is available on the Web at www.ibm.com/legal/copytrades.html.

Java and all Java-based trademarks and logos are trademarks or registered trademarks of Oracle and/or its affiliates.

Linux is a registered trademark of Linus Torvalds in the United States, other countries, or both.

Microsoft, Windows, Windows NT, and the Windows logo are trademarks of Microsoft Corporation in the United States, other countries, or both.

UNIX is a registered trademark of The Open Group in the United States and other countries.

Other product and service names might be trademarks of IBM or other companies.



Printed in USA

GC14-7413-04

