

# IBM Aspera Crypt User Guide 1.1.0

Windows

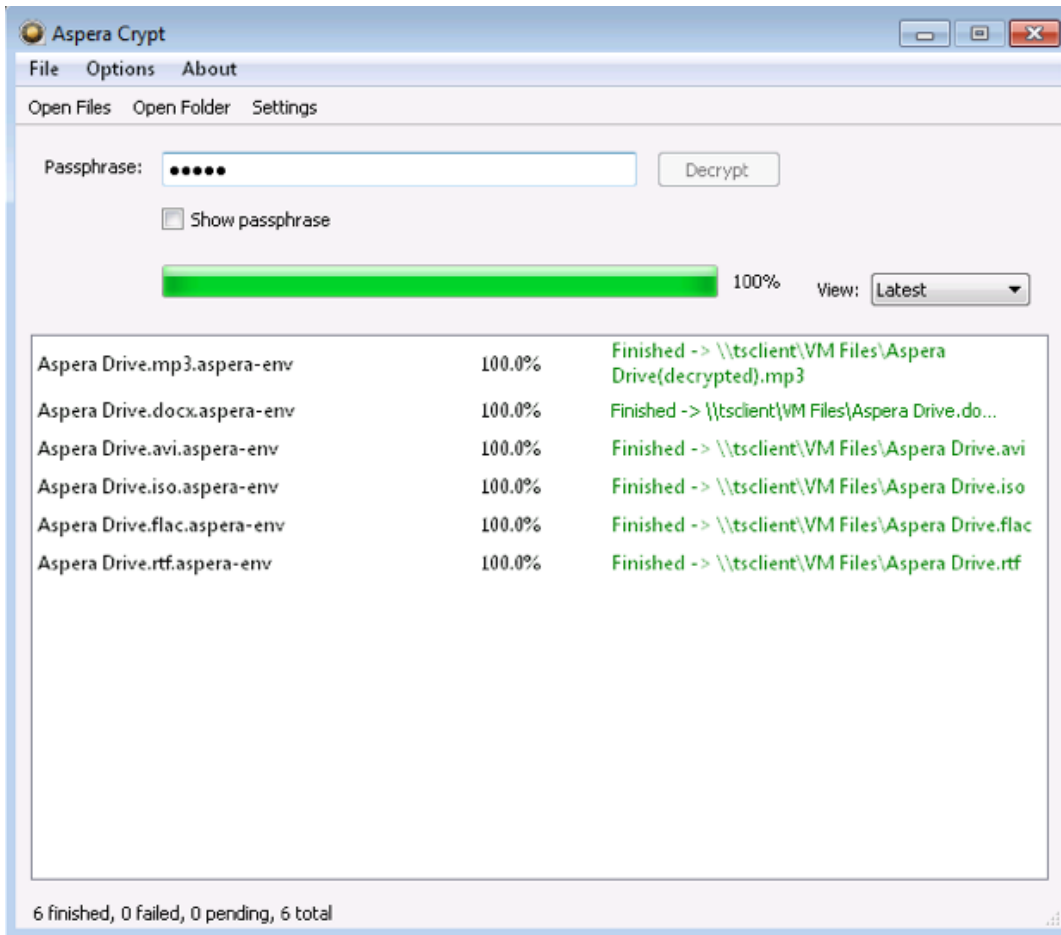
Revision:71 Generated:04/05/2019 07:32

# Contents

<b>Introduction.....</b>	<b>3</b>
<b>Installation.....</b>	<b>4</b>
<b>Working with Aspera Encrypted Files.....</b>	<b>4</b>
Decrypting Encrypted Files.....	4
Configuring Your Decryption Settings.....	8
<b>Technical Support.....</b>	<b>8</b>
<b>Legal Notice.....</b>	<b>9</b>

# Introduction

Welcome to **Aspera Crypt**, an intuitive desktop tool that enables **Aspera Encryption-at-Rest users** to easily and quickly decrypt Faspex Server packages, as well as Enterprise and Connect Server directories and files. Once you have downloaded an encrypted package or directory, Crypt makes it simple to browse for it in your file system, enter your passphrase and decrypt the contents.



Aspera Crypt includes the following features and benefits:

Benefit	Feature Description
Simple Decryption	Aspera Crypt is compatible with Aspera's Enterprise, Connect and Faspex Server products. You can decrypt Faspex packages with one click, as well as Enterprise/Connect Server directories that have <i>any</i> number of files.
Interoperable	Aspera Crypt is available as a small, installable package for Windows and Mac OS X (Intel) operating systems. Download it from Aspera's website and install it with just a few clicks of your mouse.
Light-weight Footprint	Aspera Crypt is a small program that runs from your desktop, and can be quickly downloaded from the Aspera website.

## Installation

---

Crypt is a tool for Aspera Encryption-at-Rest users. Your Aspera Enterprise, Connect or Faspex Server settings will dictate whether or not you are an Encryption-at-Rest user. If you are unsure as to which user type you are, please see your System Administrator. To download Aspera Crypt for *Windows*, visit the [Aspera website](#) and select the appropriate version for your operating system. After downloading, follow the on-screen instructions that have been provided by the installer. Please note that Aspera Crypt is installed in different locations by default, based on *whether your Windows operating system is 32-bit or 64-bit*. Please refer to the installation table below.

Platform	Default Install Path
32-bit Windows	C:\Program Files\Aspera\Crypt\
64-bit Windows	C:\Program Files (x86)\Aspera\Crypt\

## Working with Aspera Encrypted Files

---

### Decrypting Encrypted Files

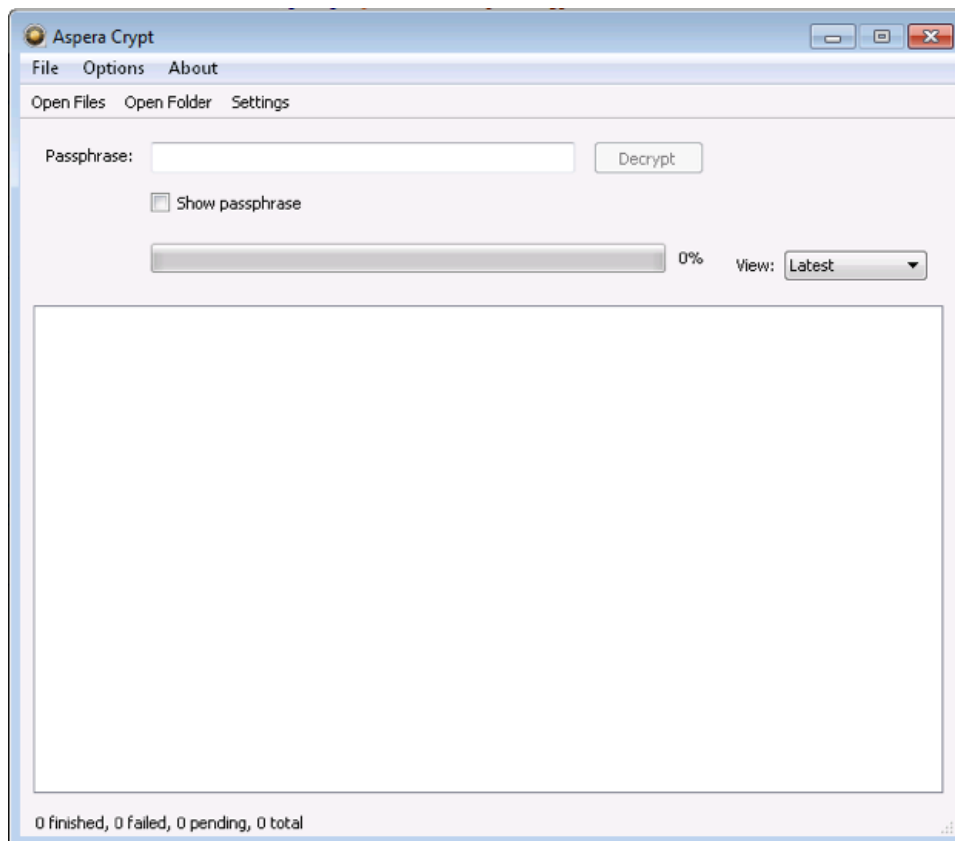
---

Once you have downloaded an encrypted package, file or directory, Aspera Crypt makes it simple to browse for it in your file system, enter your passphrase and decrypt the contents.

**Note:** When an encrypted item has been downloaded to your computer, it will have the extension **.aspera-env** (Aspera Security Envelope).

1. Launch Aspera Crypt and browse for your package, file or directory.

To launch Aspera Crypt, go to **Start > All Programs > Aspera > Crypt > Crypt** .



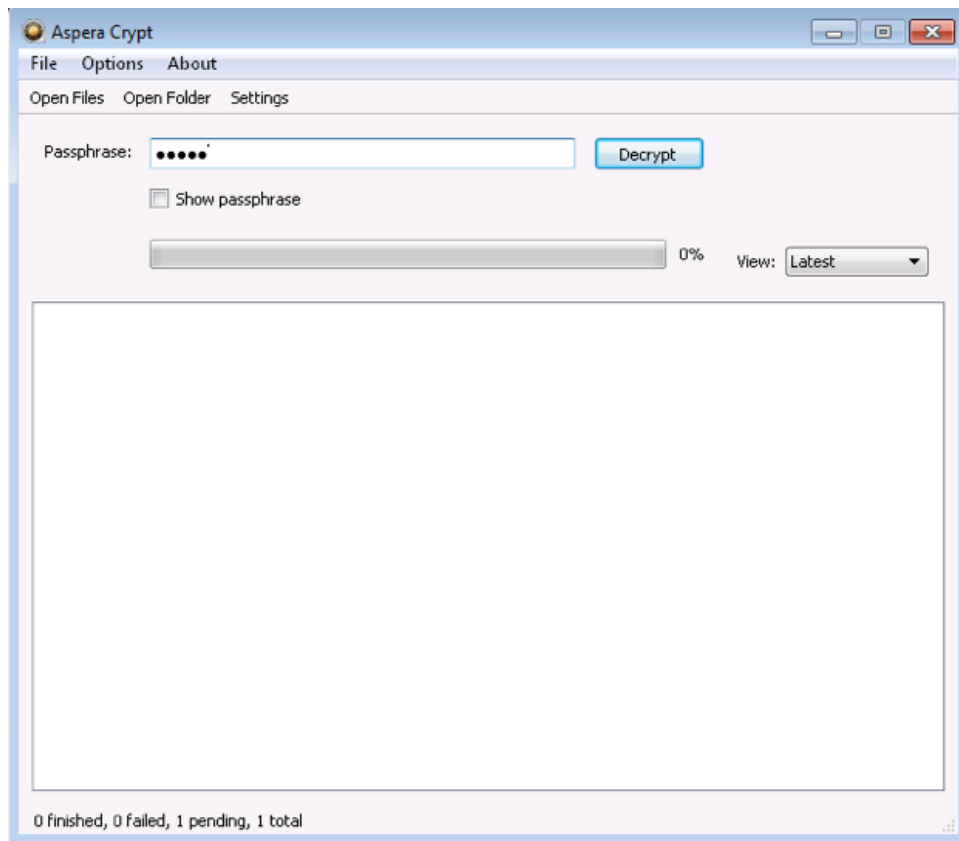
2. Browse for your package, file, or folder:

- Click **Open Files** to locate a package or an Enterprise/Connect server file.
- Click **Open Folder** to locate an Enterprise/Connect server folder.

When your encrypted contents are loaded into Crypt, a status message appears at the bottom of the application, displaying the number of items ready for decryption.

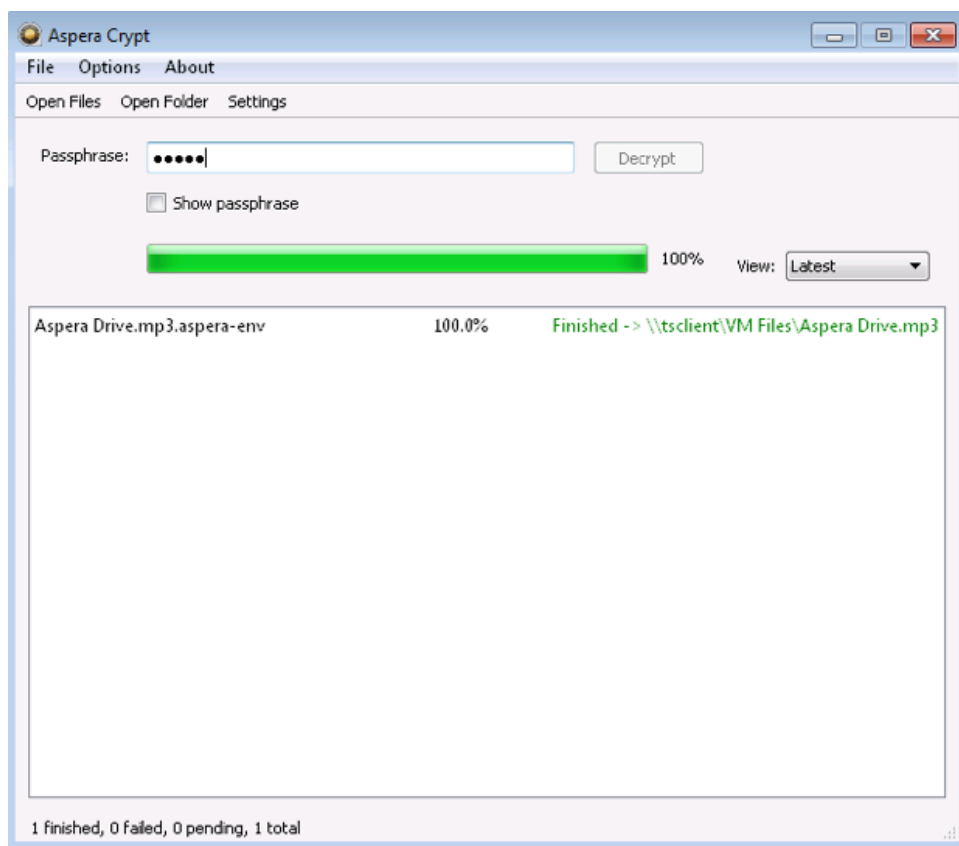
3. Input your passphrase and click the **Decrypt** button.

After browsing for your contents, enter your passphrase in the text field. Your passphrase will be masked, unless you enable the **Show Passphrase** checkbox. Note that you must input the correct passphrase in order to activate the **Decrypt** button. Once the **Decrypt** button is activated, click it to decrypt your package, file or folder.

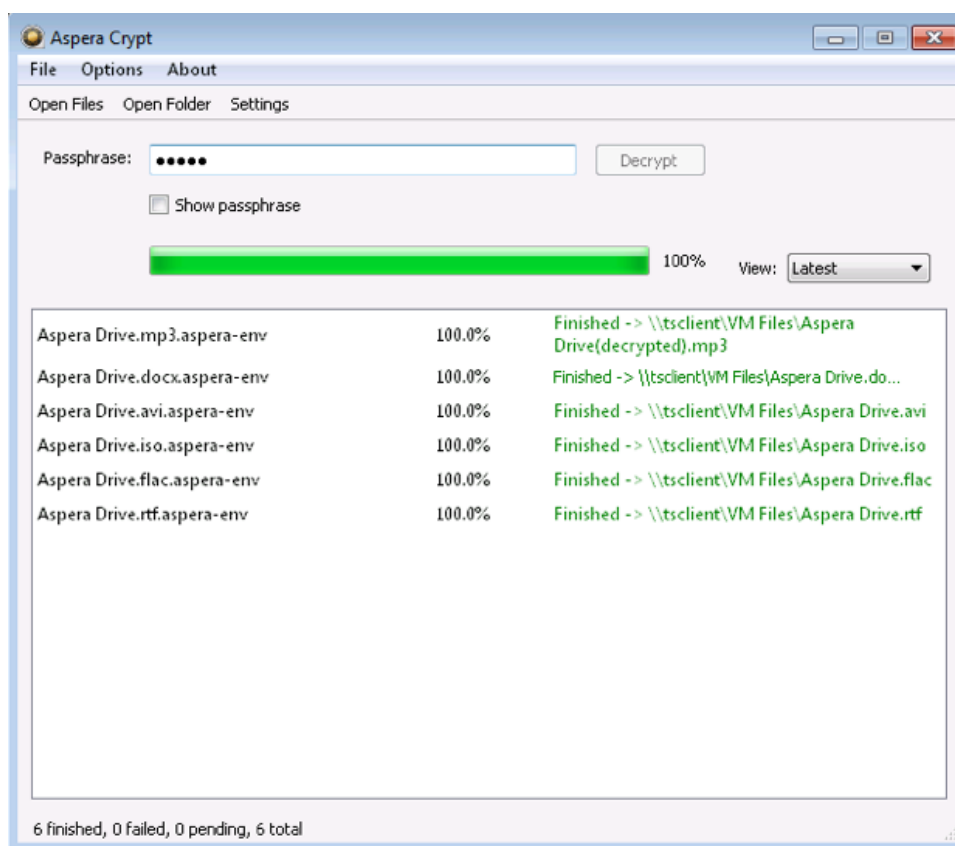


4. View output and confirm decryption.

Once your package, file or folder contents have been successfully decrypted, you can view the output in the Aspera Crypt viewing window.



The decrypted contents will appear in the same directory as the original encrypted contents. *For decrypted folders, destination files will be displayed with the extension "(decrypted)."*



If your Crypt viewing window has multiple decrypted items listed, you can use the **View** drop-down list to sort the items by **latest**, **finished** or **failed**.

## Configuring Your Decryption Settings

You can adjust the settings that are used when packages are decrypted. In the Crypt window, do the following:

1. Click **Settings**.

2. Configure the following:

- **Delete encrypted files when finished**

When this check box is selected, Crypt removes the encrypted files from your system after the destination (decrypted) content has been created.

- **Number of concurrent threads for decryption**

Select the number of threads that are decrypting at any given time. A higher setting means that files will be decrypted more quickly, but this may slow down the rest of your computer while it is running. The options are **1** (default), **2**, **4** and **8**.

## Technical Support

### Support Websites

For an overview of IBM Aspera Support services, go to <https://asperasoft.com/company/support/>.

To view product announcements, webinars, and knowledgebase articles, as well as access the Aspera Support Community Forum, sign into the IBM Aspera Support site at <https://www.ibm.com/mysupport/> using your IBMid



(not your company Aspera credentials), or set up a new account. Search for Aspera and select the product. Click **Follow** to receive notifications when new knowledgebase articles are available.

### Personalized Support

You may contact an Aspera support technician 24 hours a day, 7 days a week, through the following methods, with a guaranteed 4-hour response time.

Email	aspera-support@ibm.com
Phone (North America)	+1 (510) 849-2386, option 2
Phone (Europe)	+44 (0) 207-993-6653 option 2
Phone (Singapore)	+81 (0) 3-4578-9357 option 2

## Legal Notice

---

© 2009- 2010- 2016- 2017- 2019 Aspera, Inc., an IBM Company. All rights reserved.

Licensed Materials - Property of IBM  
5737-A725737-C65

© Copyright IBM Corp., 2009, 2016, 2017, 2019. Used under license.

US Government Users Restricted Rights - Use, duplication or disclosure restricted by GSA ADP Schedule Contract with IBM Corp.

Aspera, the Aspera logo, and FASP transfer technology are trademarks of Aspera, Inc., registered in the United States. Aspera Drive, IBM Aspera High-Speed Transfer Server (a merger of IBM products formerly named Aspera Connect Server and Aspera HST Server, 2008 and 2007), IBM Aspera High-Speed Endpoint (formerly Aspera Point-to-Point, 2006), IBM Aspera Desktop Client (formerly Aspera Client, 2005), Aspera Connect, Aspera Cargo, Aspera Console, Aspera Orchestrator, Aspera Crypt, Aspera Shares, the Aspera Add-in for Microsoft Outlook, Aspera FASPStream, and Aspera Faspex are trademarks of Aspera, Inc. All other trademarks mentioned in this document are the property of their respective owners. Mention of third-party products in this document is for informational purposes only. All understandings, agreements, or warranties, if any, take place directly between the vendors and the prospective users.